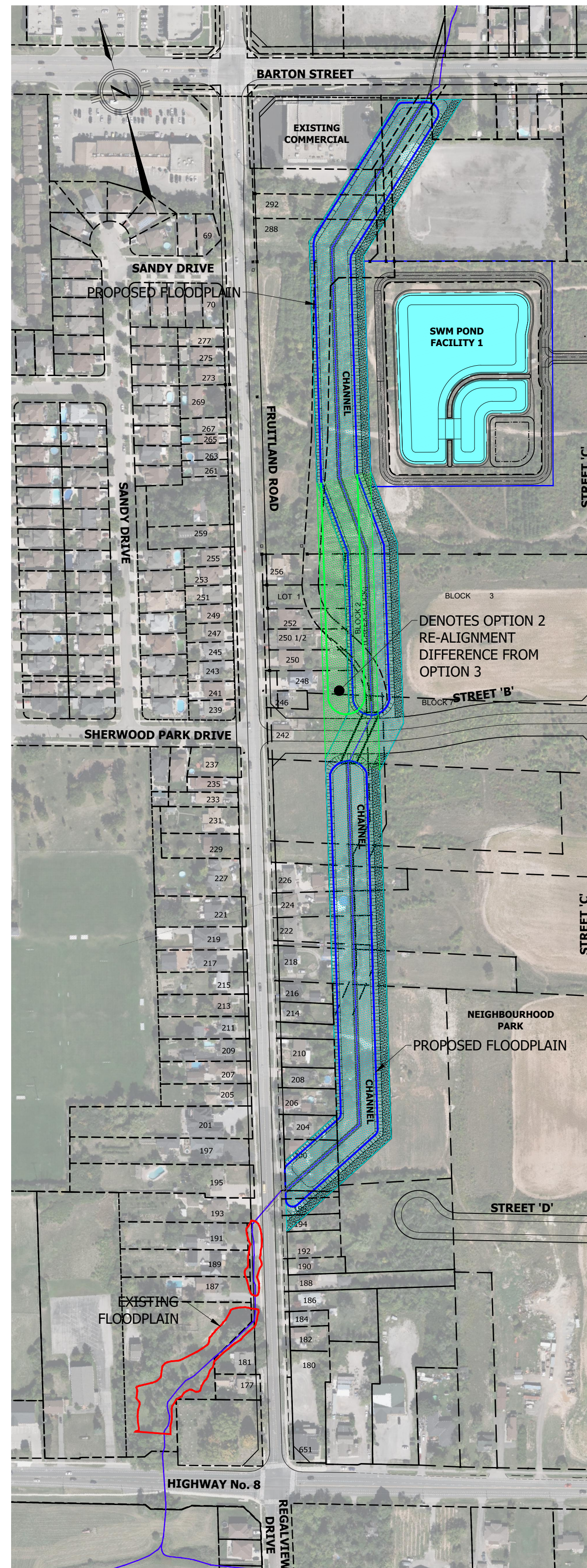


Watercourse 5 Proposed Realignment

- Option 2 - Full Channel Re-Alignment
- Option 3 (Preferred) - Full Channel Re-Alignment



THIS DIAGRAM ILLUSTRATES TWO POSSIBLE ALIGNMENTS FOR PROVIDING AN ENHANCED NATURAL CHANNEL DESIGN.

IN THESE TWO OPTIONS THE EXISTING CHANNEL WILL BE COLLECTED FROM THE SOUTHWEST CORNER OF THE SITE AND WILL BE ROUTED NORTH TO BARTON STREET.

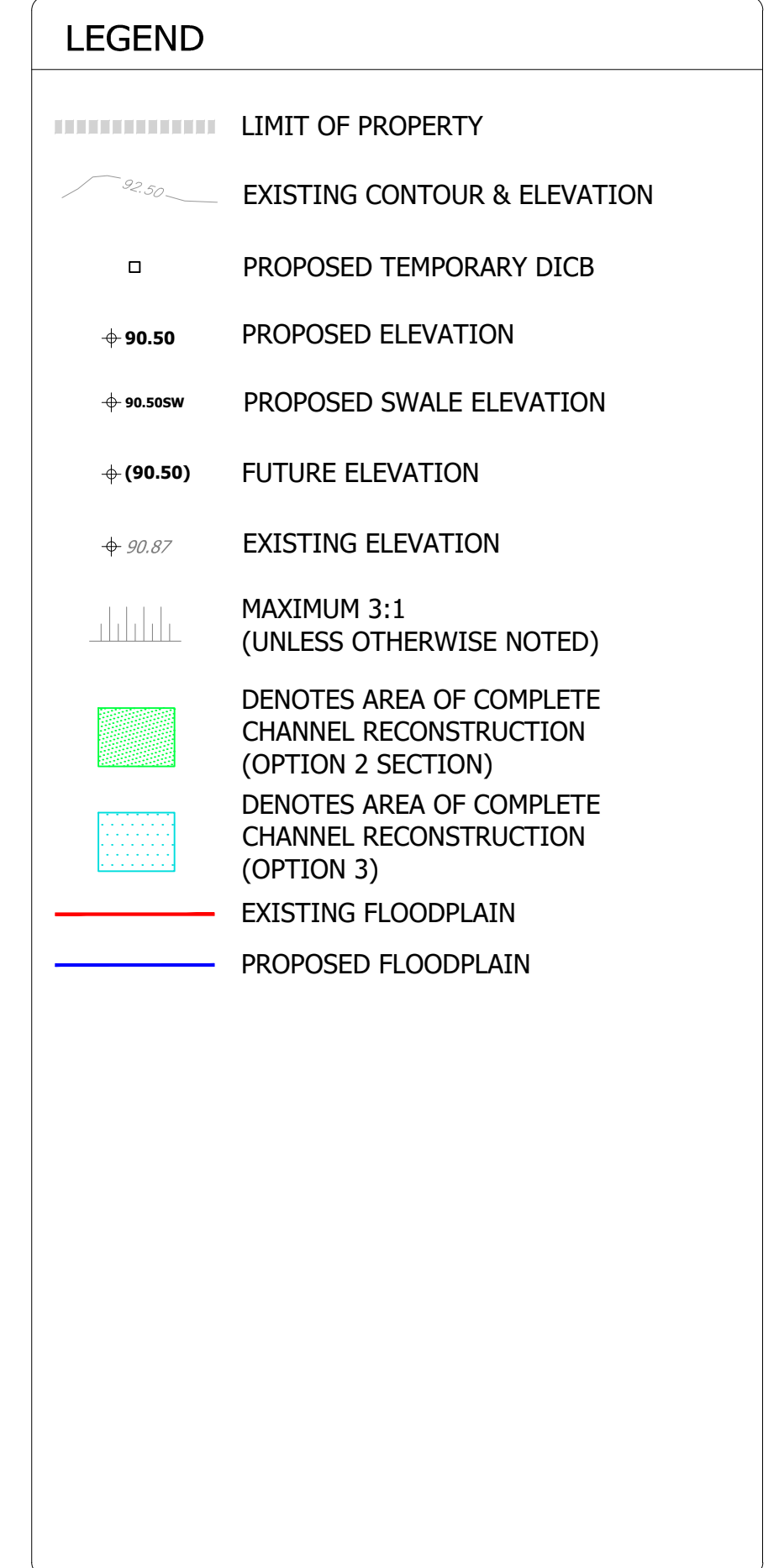
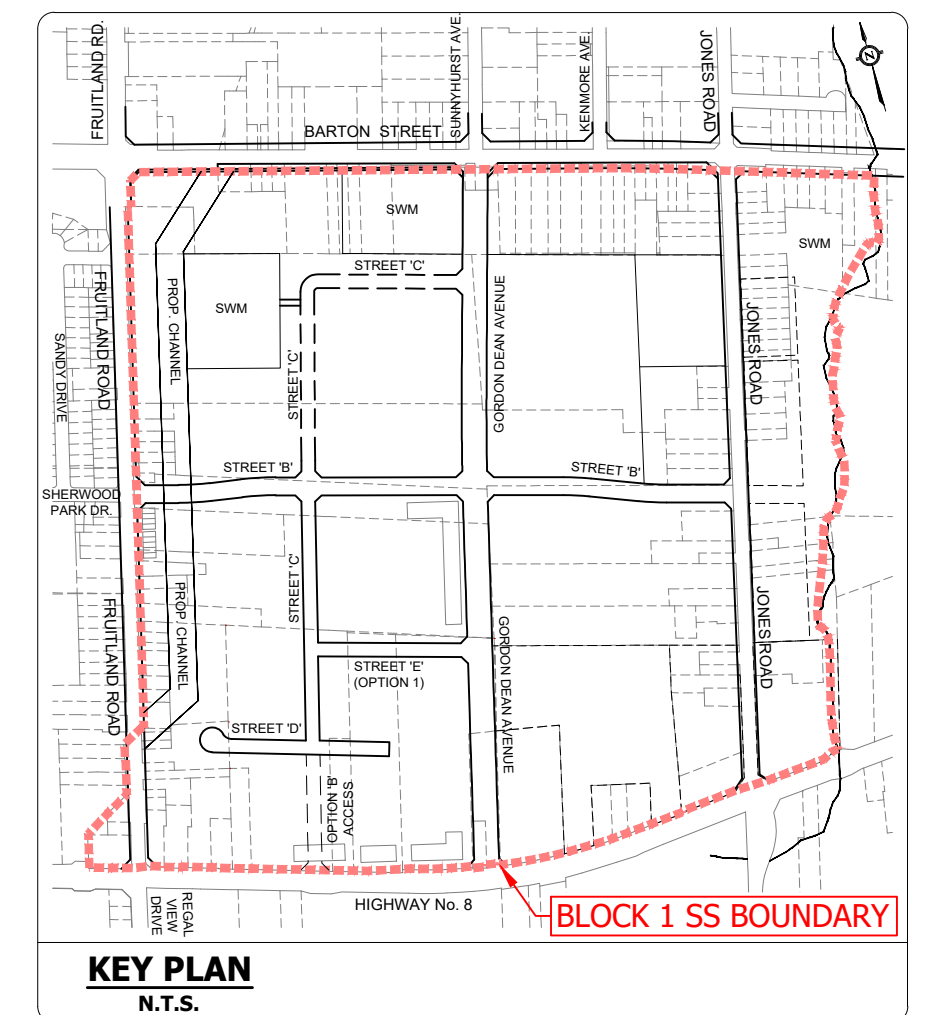
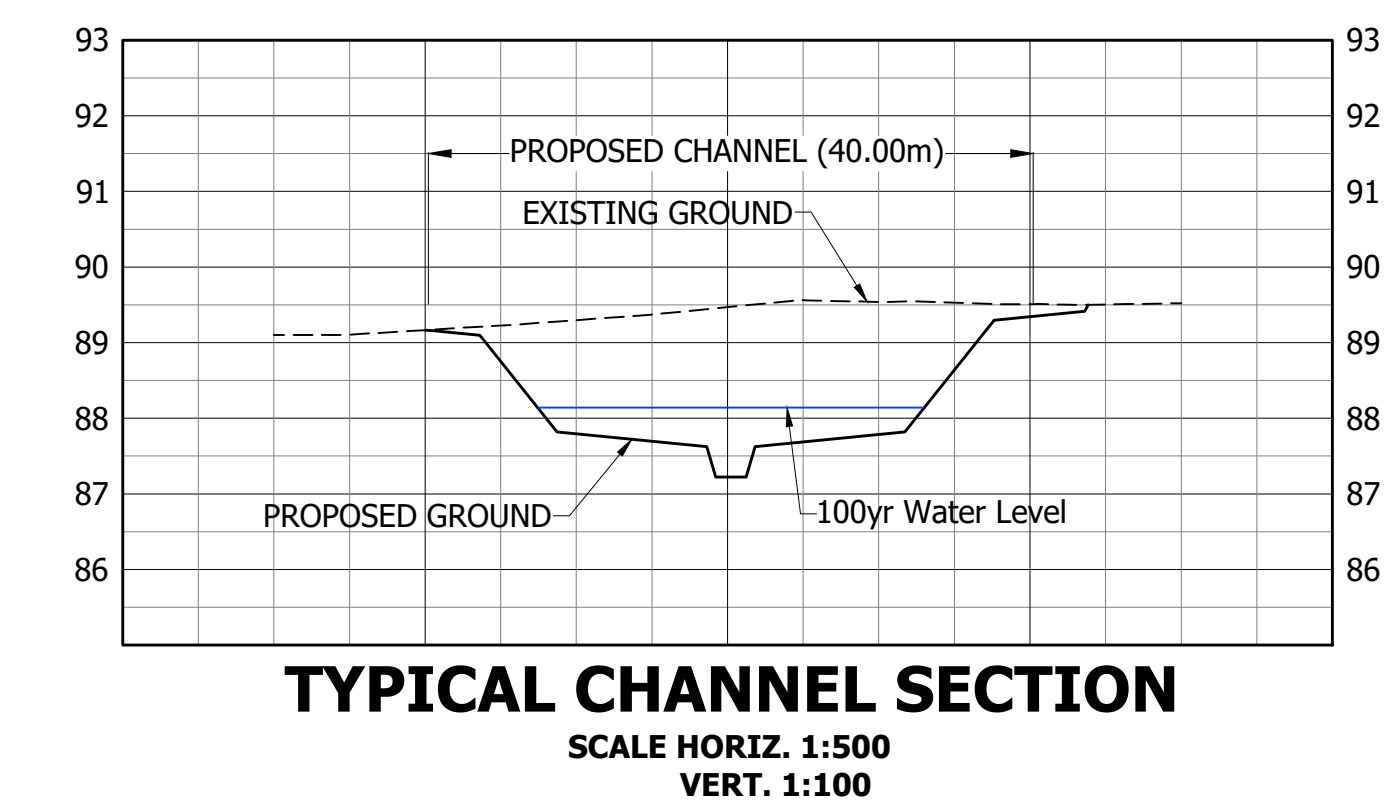
THE CHANNEL SECTION ILLUSTRATION SHOWS THE TYPICAL GEOMETRY (WIDTH AND DEPTH) OF THE PROPOSED CHANNEL ENHANCEMENT.

OPTION 2 THIS OPTION CROSSES PRIVATE LANDS AND REQUIRES OBTAINING LAND FROM NON-PARTICIPATING LANDOWNERS.

OPTION 3 IS PREFERRED AS IT MINIMIZES LANDS REQUIRED FROM NON-PARTICIPATING LANDOWNERS.

THESE OPTIONS MEET THE INTENTION OF THE STONEY CREEK URBAN BOUNDARY EXPANSION SUBWATERSHED STUDY MASTER PLAN - WEST CHANNEL WIDTH - 40m

CONCEPTUAL CHANNEL REQUIREMENTS



BENCHMARK
MONUMENT # 0720020001
ROUND IRON BAR WITH BRASS CAP LOCATED IN STONEY CREEK 9m NORTH OF CENTRELINE OF BARTON STREET 5m WEST OF CENTRELINE OF SUNNYHURST AVENUE AND 4m EAST OF CENTRELINE OF DRIVEWAY TO HOUSE No. 713.
ELEVATION: 87.489m CGVD-1928-1978.

URBANTECH® Consulting
A Division of Leighton-Zec West Ltd.
2030 Bristol Circle, Suite 105
Oakville, ON, L6H 0H2
TEL 905.829.8818 • urbantech.com

BLOCK 1 SERVICING STRATEGY
CITY OF HAMILTON
WATERCOURSE #5
REALIGNMENT
OPTIONS 2 & 3

PROJECT No.	DATE	SCALE	DWG No.
20-263	SEPT. 2023	1:2500	PIC-9

F:\PROJECTS\20-263 BLOCK 1 SS - HAMILTON\DRAWINGS\2000 - PIC9C-DWG