



800m RADIUS

SITE

SECONDARY CORRIDOR

RYMAL ROAD SECONDARY PLAN

# CONTEXT MAP

## RETIREMENT HOME

1866 RYMAL RD. E  
HAMILTON, ON

1685487 ONTARIO INC.

2022.12.09



MASRI O Inc.  
ARCHITECTS

101-609 KUMPF DRIVE  
WATERLOO, ON, N2V 1K8  
PH. 519.579.0072  
www.masrioarchitects.ca



## CONTEXT MASSING

### RETIREMENT HOME

1866 RYMAL RD. E  
HAMILTON, ON  
1685487 ONTARIO INC.

2022.12.09



MASRI O Inc.  
ARCHITECTS  
101-609 KUMPF DRIVE  
WATERLOO, ON, N2V 1K8  
PH. 519.579.0072  
www.masrioarchitects.ca.



RYMAL RD E - LOOKING SOUTH

1



RYMAL RD E - LOOKING SOUTH

2



DAKOTA BLVD - LOOKING EAST

3



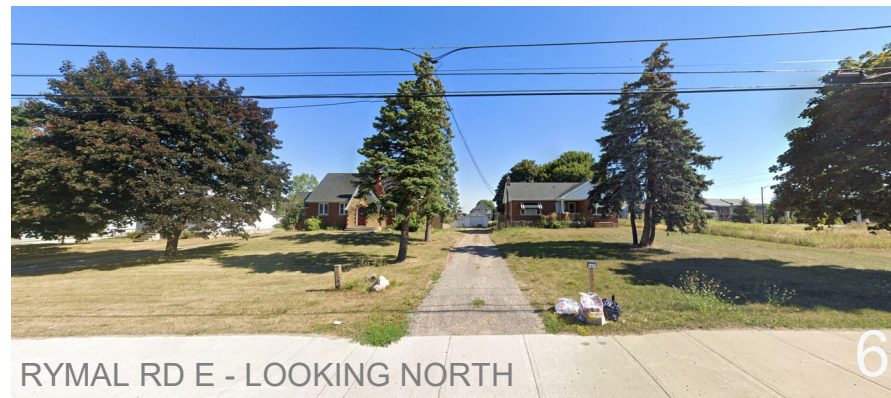
RYMAL RD E - LOOKING NORTH

4



DAKOTA BLVD - LOOKING WEST

5



RYMAL RD E - LOOKING NORTH

6



SITE MAP

# STREETSCAPE CONTEXT

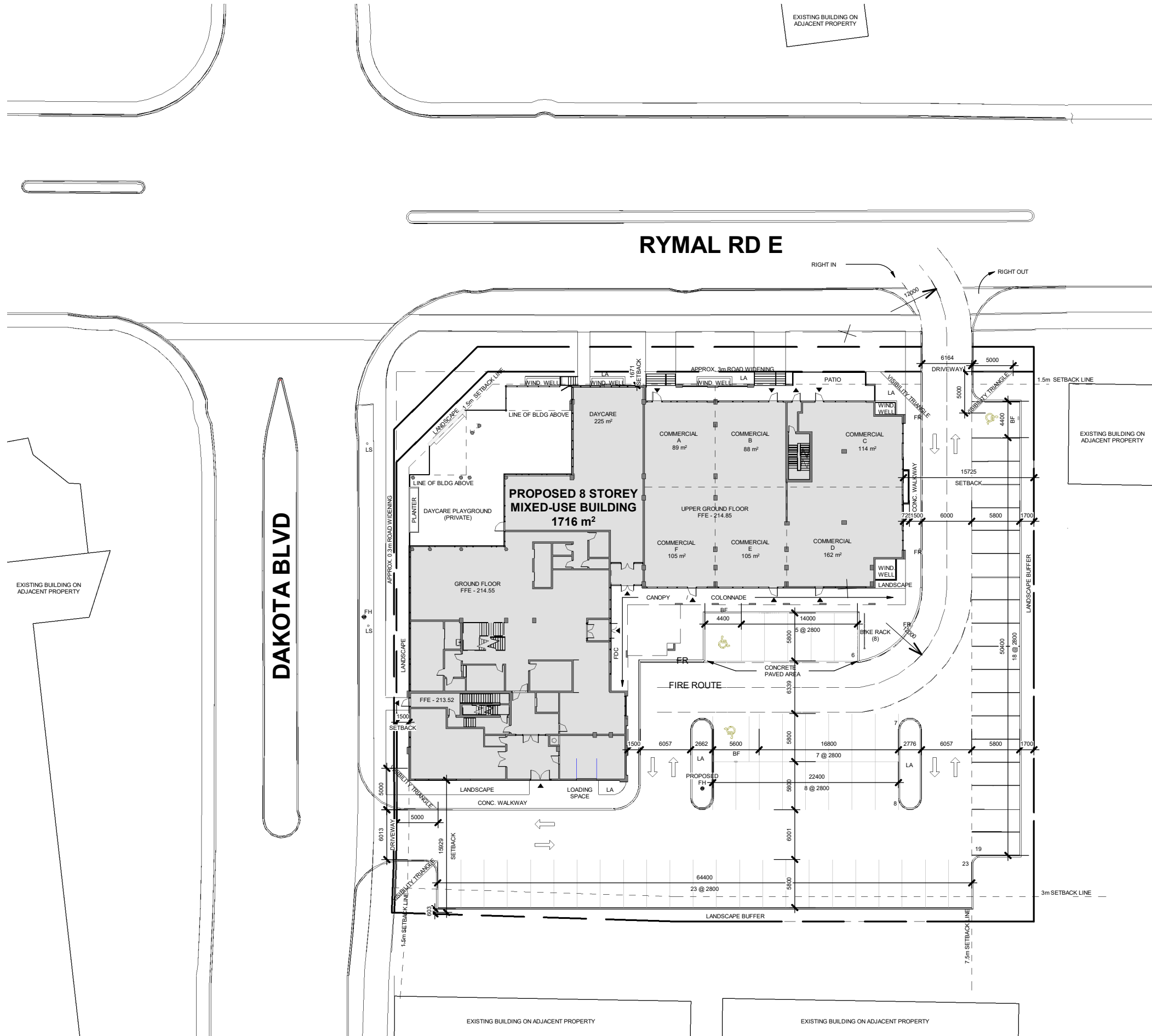
## RETIREMENT HOME

1866 RYMAL RD. E  
HAMILTON, ON  
1685487 ONTARIO INC.

2022.12.09



MASRI O Inc.  
ARCHITECTS  
101-609 KUMPF DRIVE  
WATERLOO, ON, N2V 1K8  
PH. 519.579.0072  
www.masrioarchitects.ca.



# SITE PLAN

**RETIREMENT HOME**  
 1866 RYMAL RD. E  
 HAMILTON, ON  
 1685487 ONTARIO INC.  
 2022.12.09

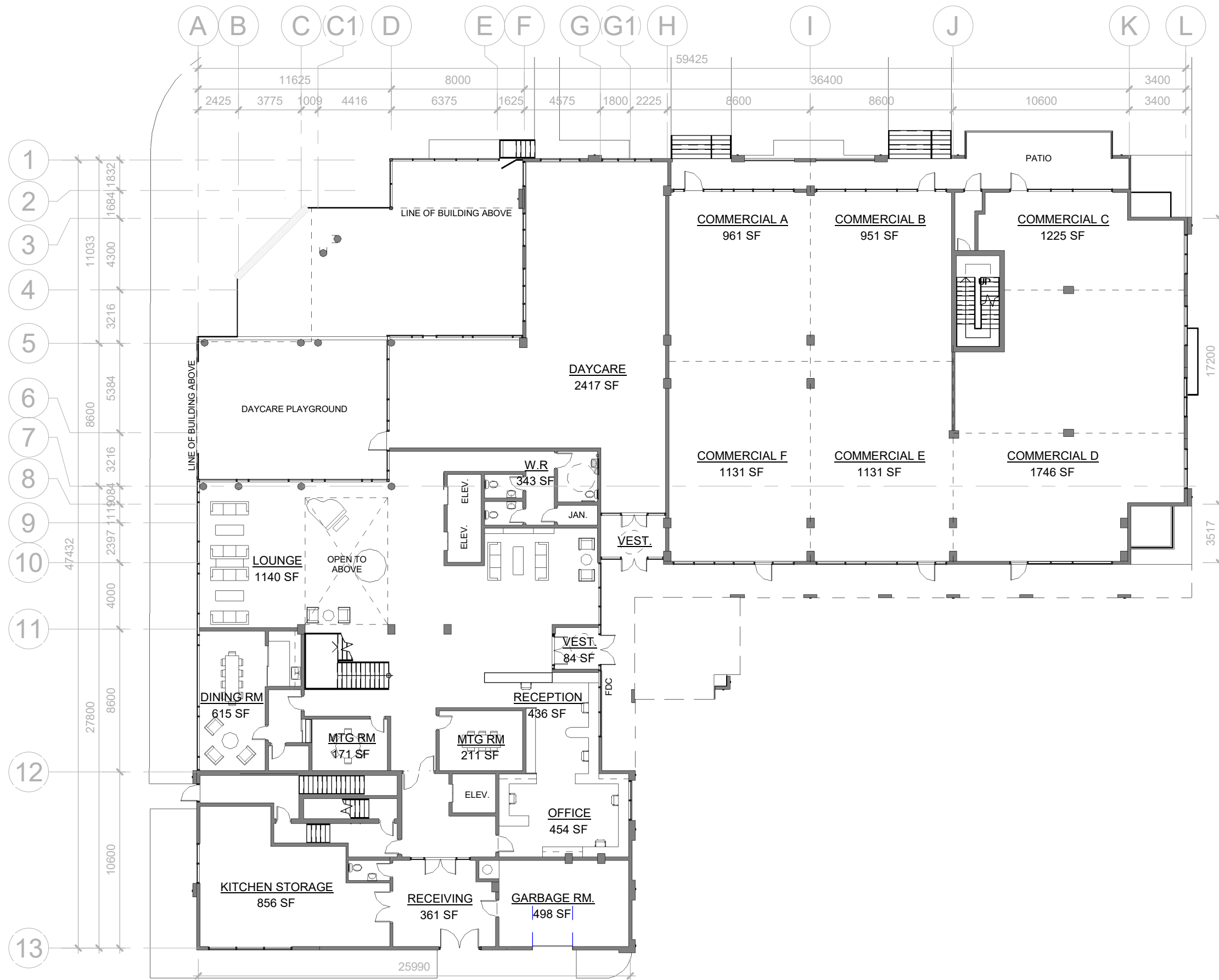
 **MASRI O Inc.**  
**ARCHITECTS**  
 101-609 KUMPF DRIVE  
 WATERLOO, ON, N2V 1K8  
 PH. 519.579.0072  
 www.masrioarchitects.ca.



# BASEMENT FLOOR PLAN

**RETIREMENT HOME**  
 1866 RYMAL RD. E  
 HAMILTON, ON  
**1685487 ONTARIO INC.**  
 2022.12.09



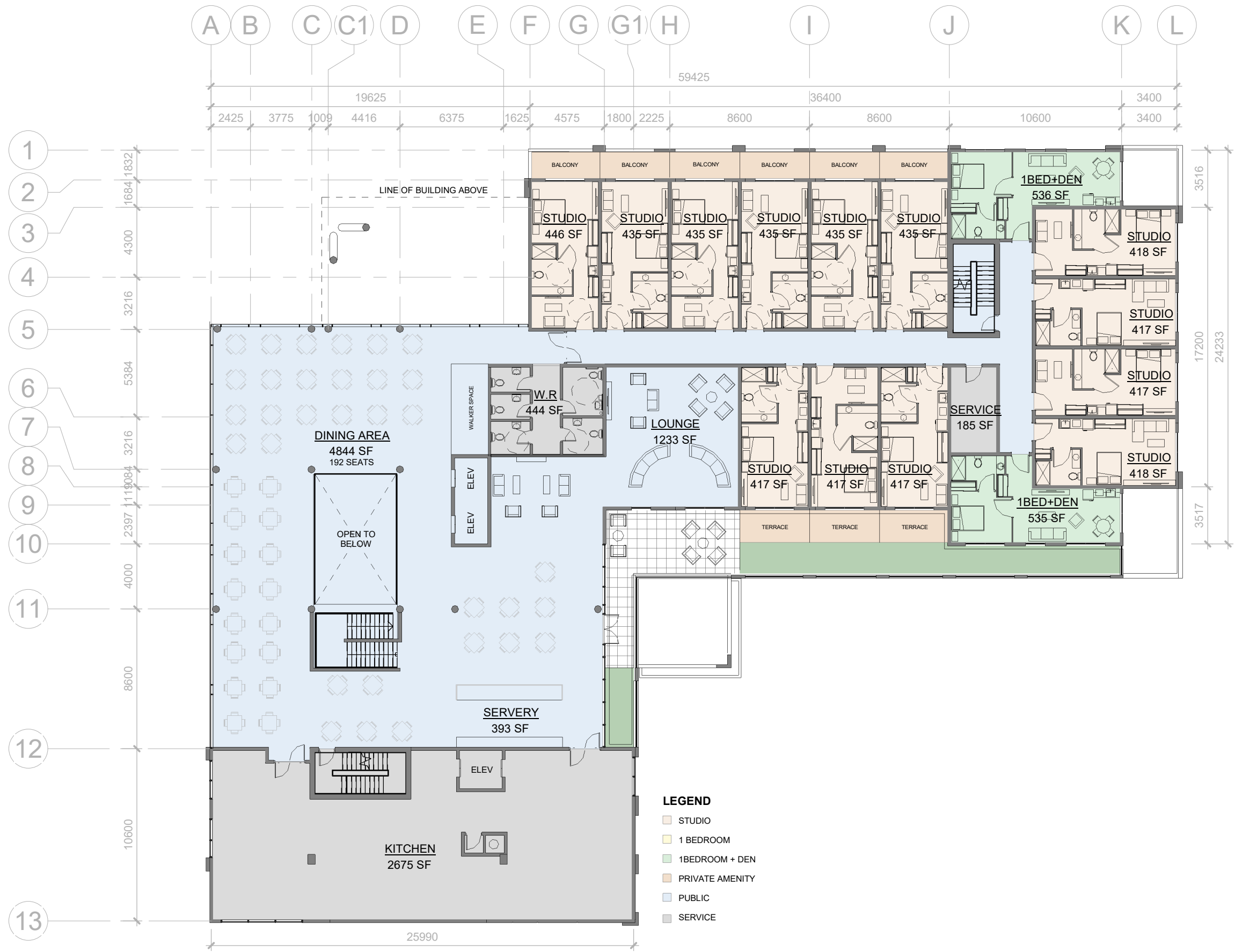


# GROUND FLOOR PLAN

**RETIREMENT HOME**  
 1866 RYMAL RD. E  
 HAMILTON, ON  
**1685487 ONTARIO INC.**  
 2022.12.09



**MASRI O Inc.**  
**ARCHITECTS**  
 101-609 KUMPF DRIVE  
 WATERLOO, ON, N2V 1K8  
 PH. 519.579.0072  
 www.masrioarchitects.ca.



# 2ND FLOOR PLAN

**RETIREMENT HOME**  
 1866 RYMAL RD. E  
 HAMILTON, ON  
**1685487 ONTARIO INC.**  
 2022.12.09





# 3RD FLOOR PLAN

**RETIREMENT HOME**  
 1866 RYMAL RD. E  
 HAMILTON, ON  
**1685487 ONTARIO INC.**  
 2022.12.09

**MASRI O Inc.**  
**ARCHITECTS**  
 101-609 KUMPF DRIVE  
 WATERLOO, ON, N2V 1K8  
 PH. 519.579.0072  
 www.masrioarchitects.ca.





- LEGEND**
- STUDIO
  - 1 BEDROOM
  - 1 BEDROOM + DEN
  - 2 BEDROOM
  - PRIVATE AMENITY
  - PUBLIC
  - SERVICE

# 4TH-6TH FLOOR PLAN

**RETIREMENT HOME**  
 1866 RYMAL RD. E  
 HAMILTON, ON  
**1685487 ONTARIO INC.**  
 2022.12.09

MASRI O Inc.  
 ARCHITECTS  
 101-609 KUMPF DRIVE  
 WATERLOO, ON, N2V 1K8  
 PH. 519.579.0072  
 www.masrioarchitects.ca.



# 7TH-8TH FLOOR PLAN

**RETIREMENT HOME**  
 1866 RYMAL RD. E  
 HAMILTON, ON  
**1685487 ONTARIO INC.**  
 2022.12.09





**North Elevation**  
SCALE: 1 : 450



**South Elevation**  
SCALE: 1 : 450

**NORTH AND SOUTH ELEVATIONS**

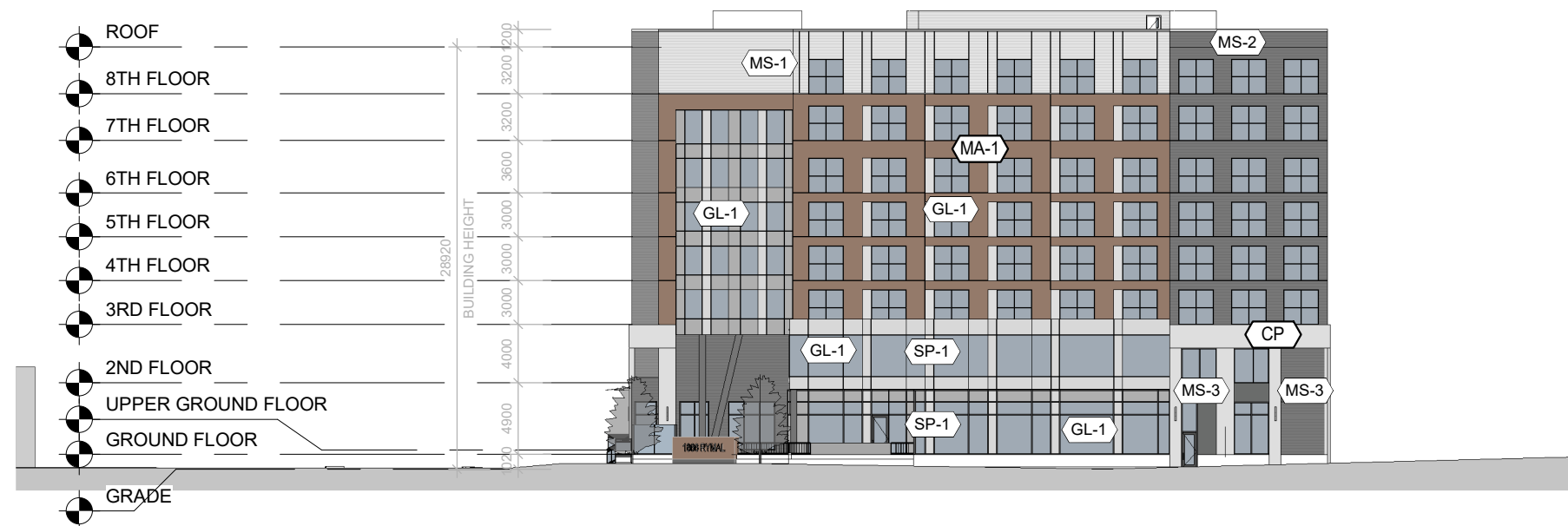
**RETIREMENT HOME**  
1866 RYMAL RD. E  
HAMILTON, ON  
**1685487 ONTARIO INC.**  
2022.12.09



**MASRI O Inc.**  
**ARCHITECTS**  
101-609 KUMPF DRIVE  
WATERLOO, ON, N2V 1K8  
PH. 519.579.0072  
www.masrioarchitects.ca.



**East Elevation**  
SCALE: 1 : 450



**West Elevation**  
SCALE: 1 : 450

ELEVATION SCHEDULE	
MA-1	BRICK VENEER #1 BRAMPTON BRICK - REGENCY BROWN
MS-1	METAL SIDING #1 LIGHT GREY HOR. PATTERN
MS-2	METAL SIDING #2 MEDIUM GREY HOR. PATTERN
MS-3	METAL SIDING #3 DARK GREY
MS-4	METAL SIDING #4 LIGHT GREY
CP	CANOPY LIGHT GREY
R-1	BALCONY RAILING ALUMINUM RAILING, GLASS PANEL
R-2	FENCE ALUMINUM RAILING, GLASS PANEL
R-3	FENCE GLASS PANEL
W-1	WINDOW #1 GLASS COLOUR - BLUE-GREY
GL-1	GLAZING PANEL #1 GLASS COLOUR - BLUE-GREY
SP-1	SPANDREL #1 GLASS COLOUR - WHITE
SP-2	SPANDREL #2 GLASS COLOUR - GREY

**ELEVATION NOTES:**

1. EXTERIOR WINDOW FRAMES TO BE BRONZE ANODIZED ALUMINUM FINISH. PREFINISHED METAL FLASHING AND TRIM TO MATCH.
2. EXTERIOR METAL DOORS AND FRAMES ARE TO BE PAINTED TO MATCH THE COLOUR OF THE ADJACENT EXTERIOR MATERIAL, UNLESS NOTED OTHERWISE.
3. ALL EXTERIOR FLASHING SHALL BE PREFINISHED METAL, COLOUR-MATCHED TO THE ADJACENT MATERIAL, UNLESS NOTED OTHERWISE.
4. ALL MECHANICAL GRILLES & LOUVERS ARE TO BE OF PREFINISHED METAL, COLOUR-MATCHED TO THE ADJACENT MATERIAL, UNLESS NOTED OTHERWISE.
5. ALL PERIMETER SEALANT SHALL BE COLOUR-MATCHED TO ADJACENT MATERIALS, UNLESS NOTED OTHERWISE.
6. PARKING AND SITE LIGHT FIXTURES WILL BE CONTAINED WITH IN THE SITE AND FULL-CUT OFF WITH NO GLARE.

**EAST AND WEST ELEVATIONS**

**RETIREMENT HOME**

1866 RYMAL RD. E  
HAMILTON, ON  
**1685487 ONTARIO INC.**  
2022.12.09



MASRI O Inc.  
ARCHITECTS  
101-609 KUMPF DRIVE  
WATERLOO, ON, N2V 1K8  
PH. 519.579.0072  
www.masrioarchitects.ca.



1865 Rymal Rd

Rymal Rd E

## STREETSCAPE CROSS SECTION THROUGH RYMAL RD E

### RETIREMENT HOME

1866 RYMAL RD. E  
HAMILTON, ON

**1685487 ONTARIO INC.**

2022.12.09



MASRI O Inc.  
ARCHITECTS  
101-609 KUMPF DRIVE  
WATERLOO, ON, N2V 1K8  
PH. 519.579.0072  
www.masrioarchitects.ca.



## PERSPECTIVE VIEWS

### RETIREMENT HOME

1866 RYMAL RD. E  
HAMILTON, ON

**1685487 ONTARIO INC.**

2022.12.09



**MASRI O Inc.**  
**ARCHITECTS**

101-609 KUMPF DRIVE  
WATERLOO, ON, N2V 1K8  
PH. 519.579.0072  
[www.masrioarchitects.ca](http://www.masrioarchitects.ca)



NORTH-EAST VIEW



NORTH-WEST VIEW

PERSPECTIVE VIEWS

**RETIREMENT HOME**  
1866 RYMAL RD. E  
HAMILTON, ON  
**1685487 ONTARIO INC.**  
2022.12.09



**MASRI O Inc.**  
**ARCHITECTS**  
101-609 KUMPF DRIVE  
WATERLOO, ON, N2V 1K8  
PH. 519.579.0072  
[www.masrioarchitects.ca](http://www.masrioarchitects.ca)