

Flexible bistro seating



Round tree grates represent train wheels



Urban Braille



Alcove seating nodes to represent the historic townhouse alcoves



Heritage paving pattern and colour



Concrete cube seats



Bike racks to represent front of train grill



Benches

project
 188 Cannon Street E and
 134-136 Ferguson Ave N
 Hamilton, Ontario

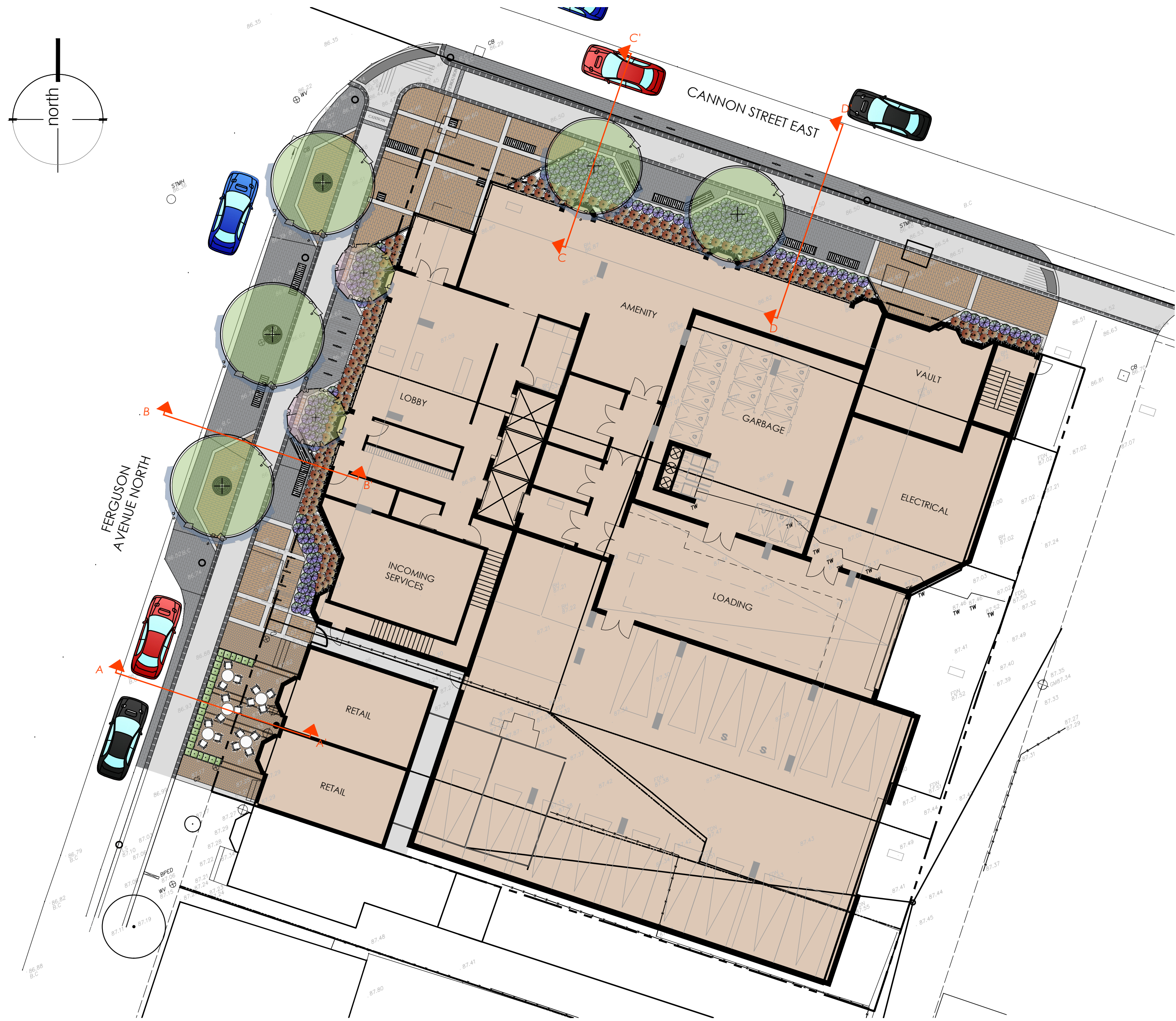
March 7, 2024



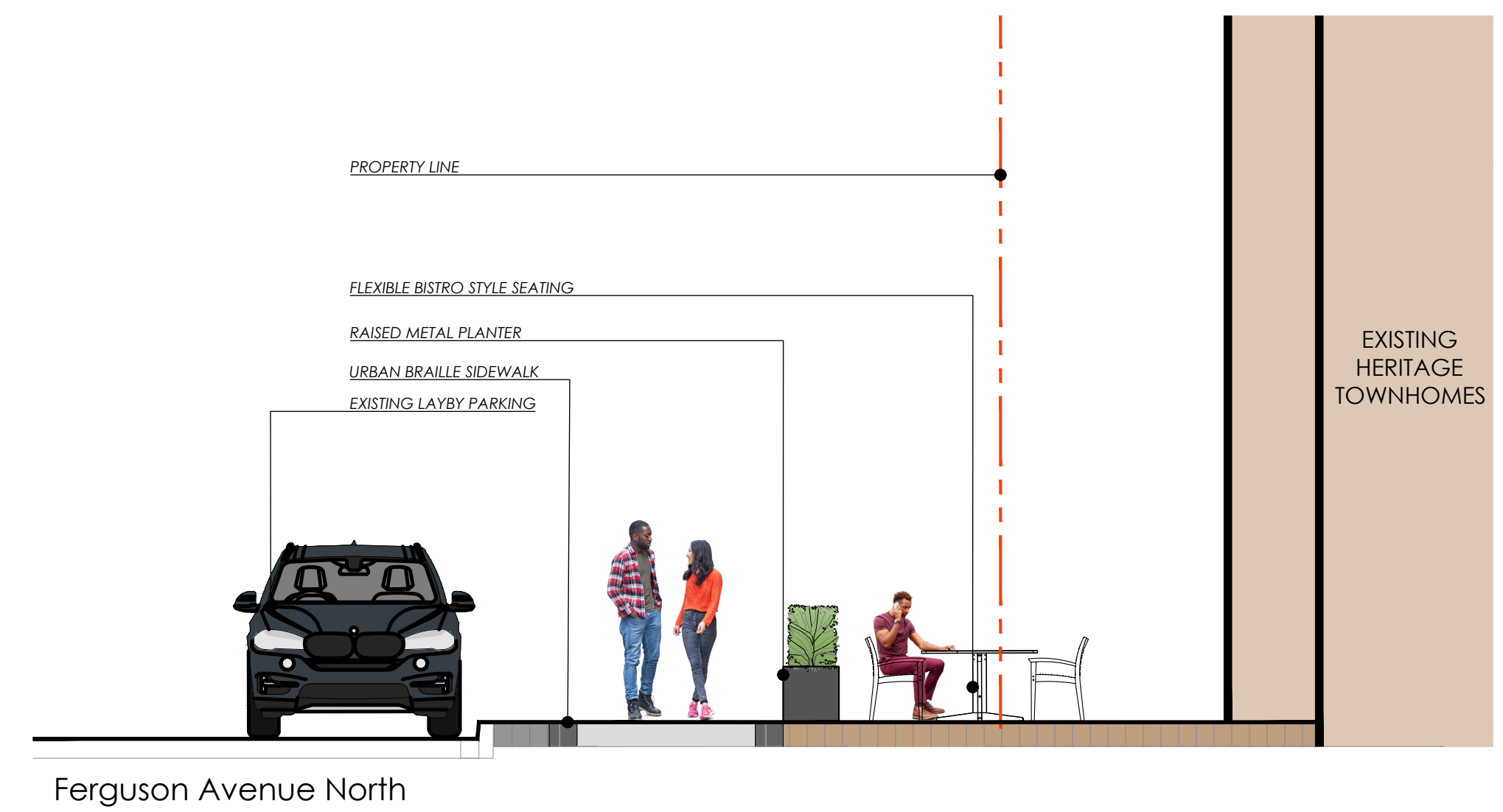
adesso design inc.
 landscape architecture

69 John Street South, Suite 250
 Hamilton, ON L8N 2B9
 t. 905.526.8876
 www.adessodesigninc.ca

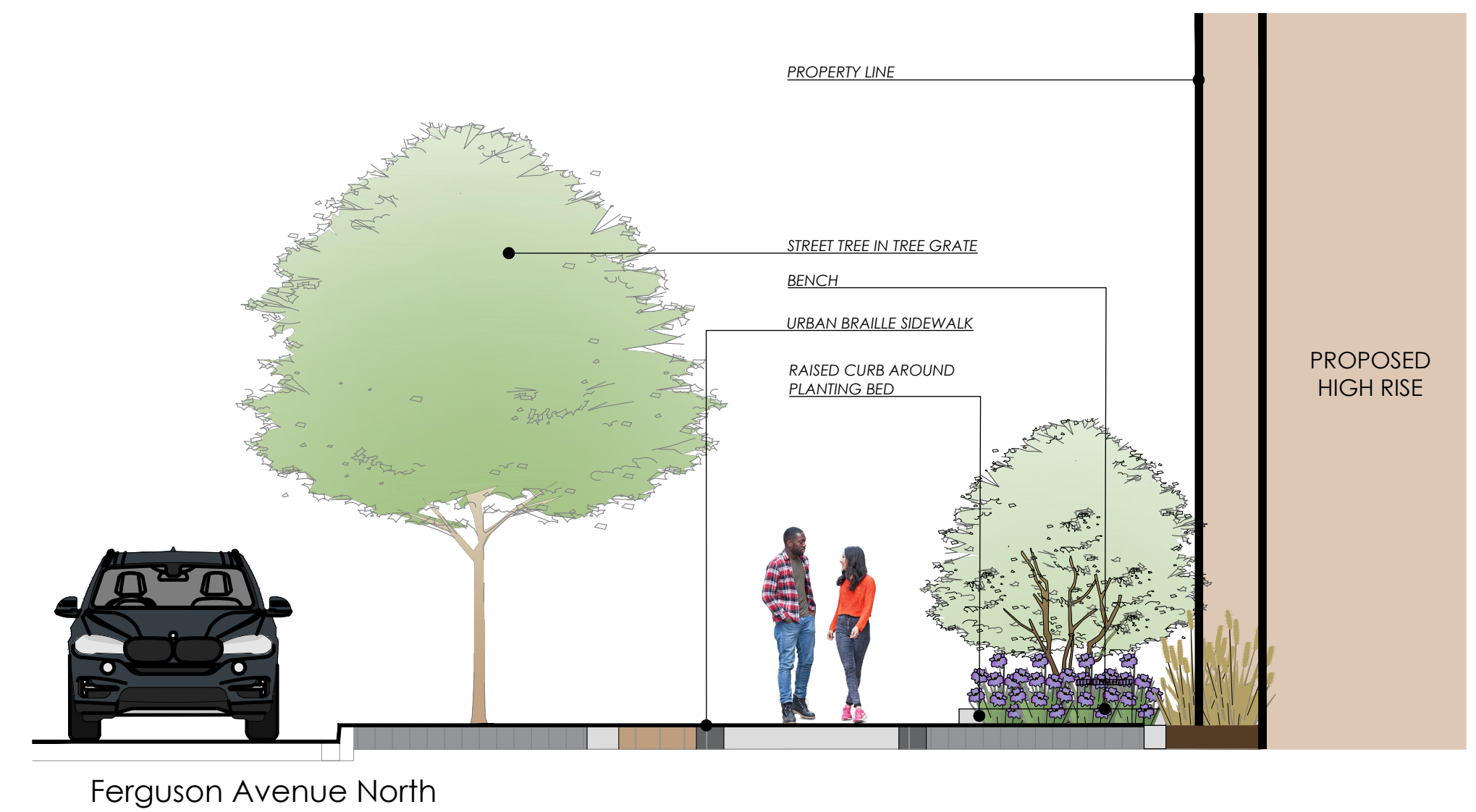
All rights reserved. This drawing is the property of adesso design inc. and is not to be reproduced, stored in a retrieval system, or transmitted in any form or by any means, electronic, mechanical, photocopying, recording, or by any information storage and retrieval system, without the prior written permission of adesso design inc.



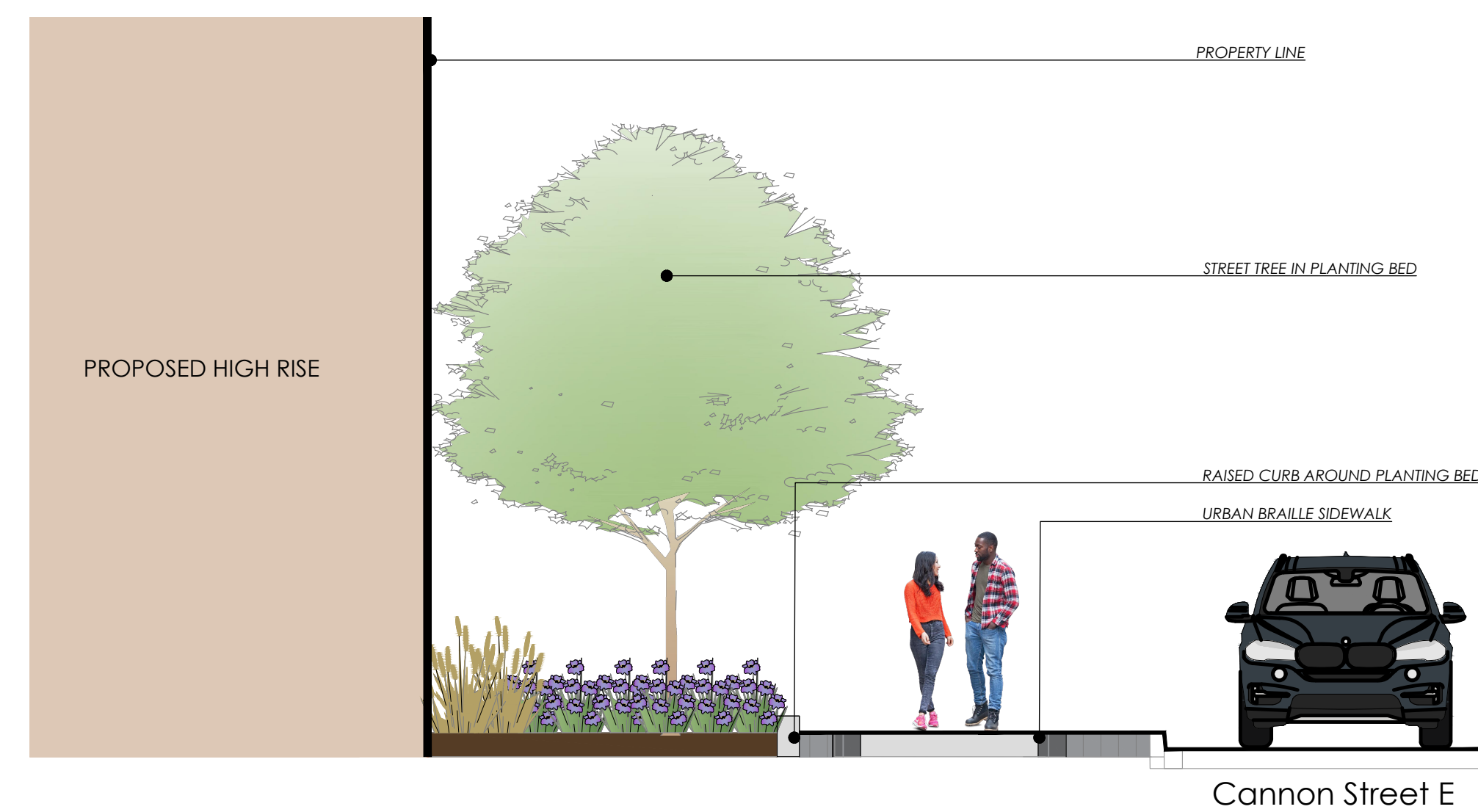
SECTION AA'



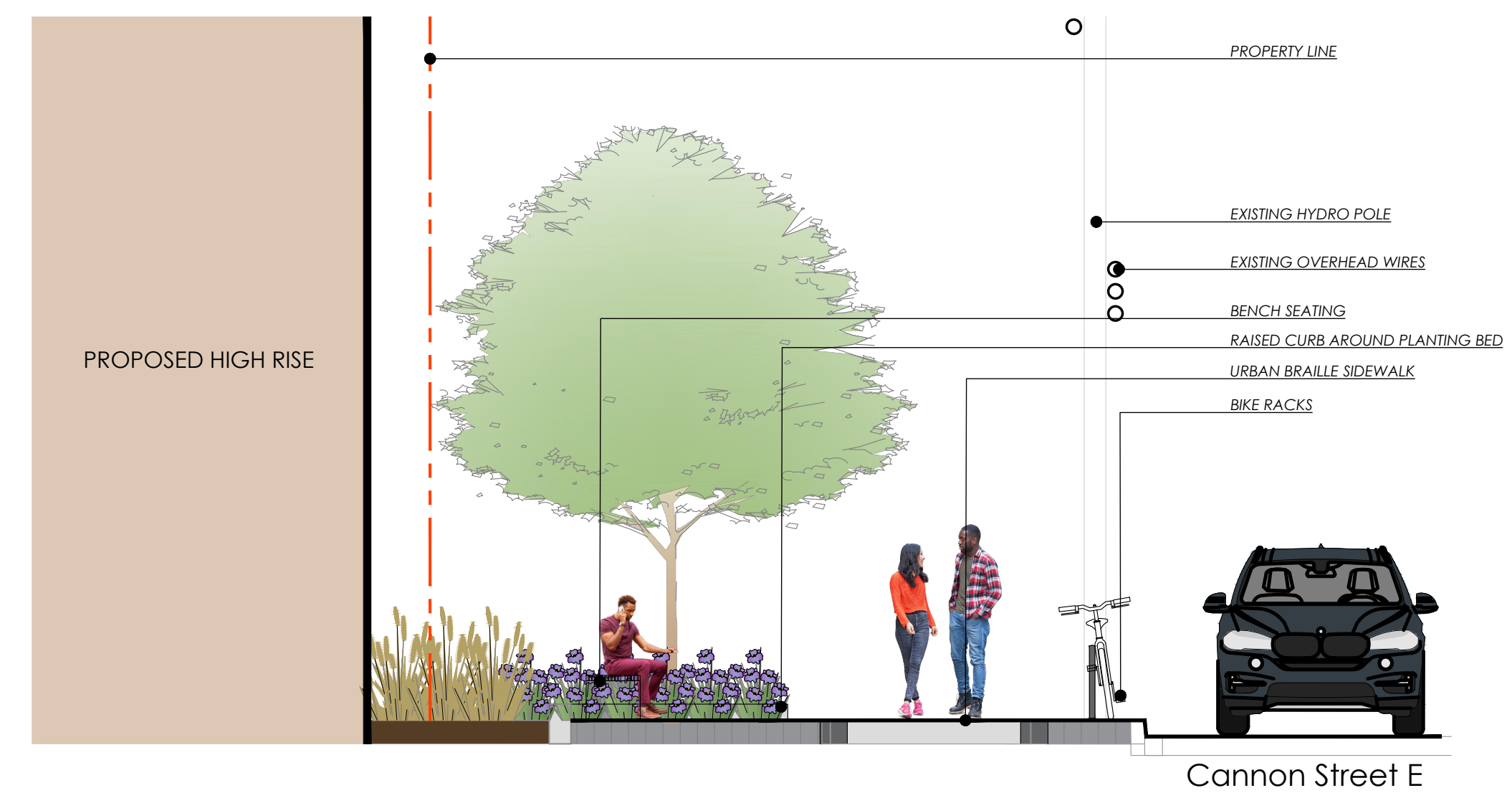
SECTION BB'



SECTION CC'



SECTION DD'



project
 188 Cannon Street E and
 134-136 Ferguson Ave N
 Hamilton, Ontario

March 7, 2024

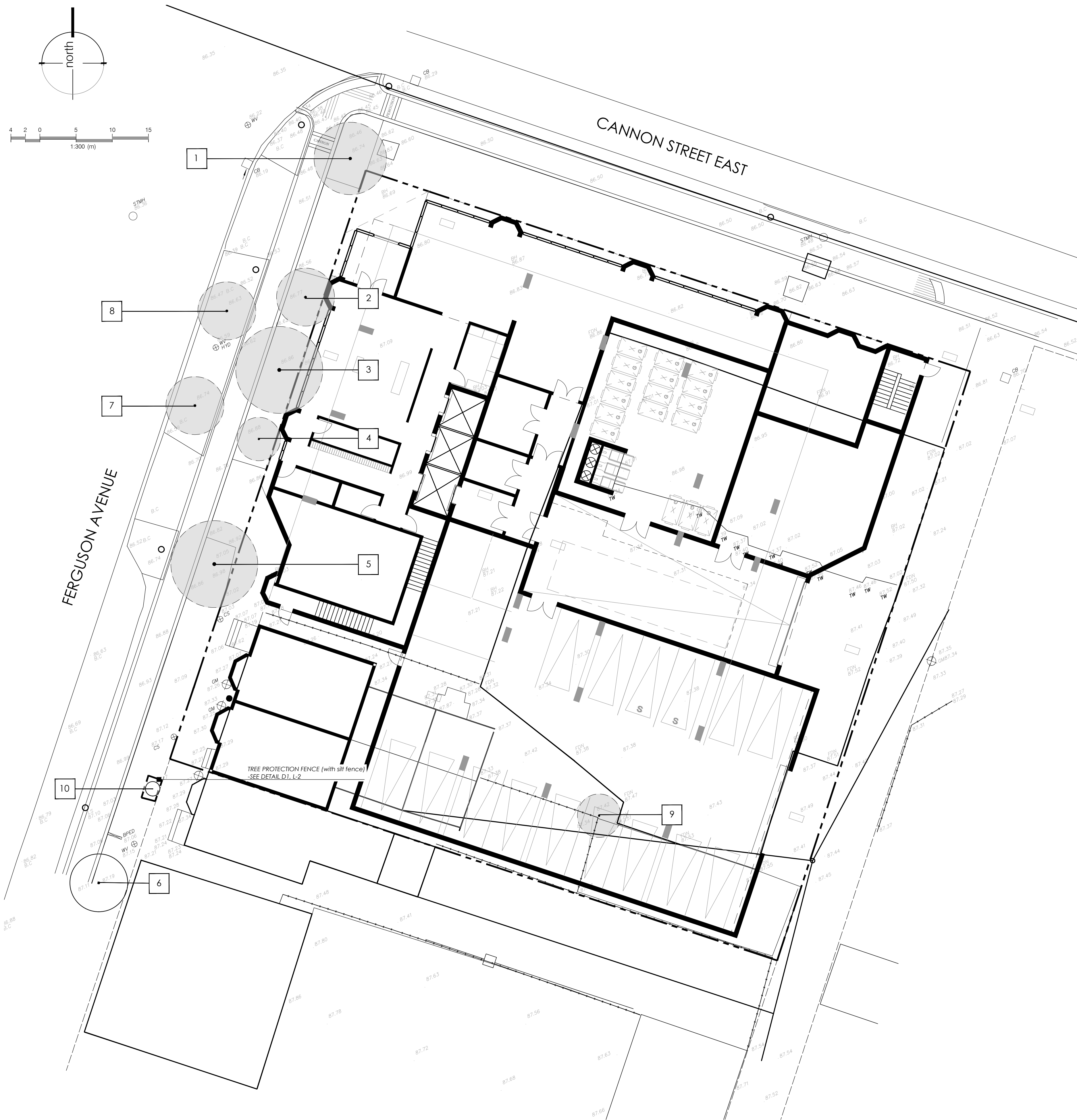
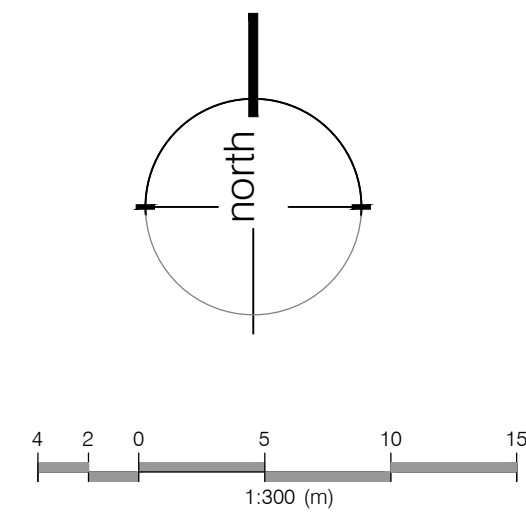


adesso design inc.
 landscape architecture

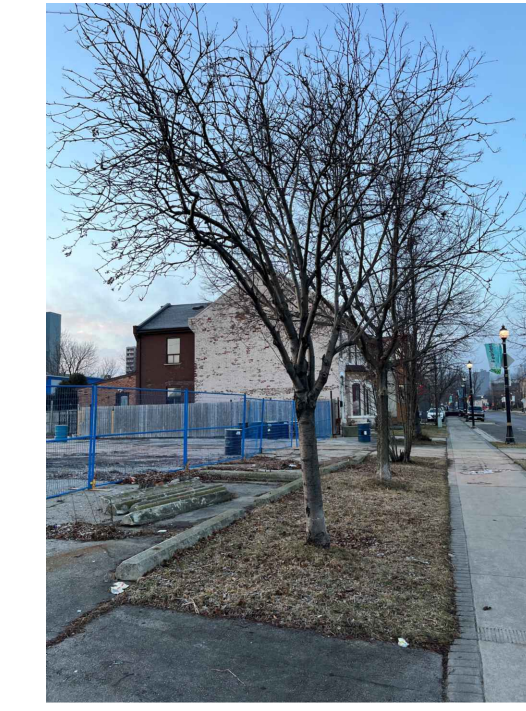


69 John Street South, Suite 250
 Hamilton, ON L8N 2B9
 t. 905.526.8876
 www.adessodesigninc.ca

ALL RIGHTS RESERVED. THIS DOCUMENT IS THE PROPERTY OF adesso design inc. IT IS TO BE USED ONLY FOR THE PROJECT AND SITE SPECIFICALLY IDENTIFIED IN THE TITLE BLOCK. ANY REUSE OR MODIFICATION OF THIS DOCUMENT WITHOUT THE WRITTEN PERMISSION OF adesso design inc. IS STRICTLY PROHIBITED.



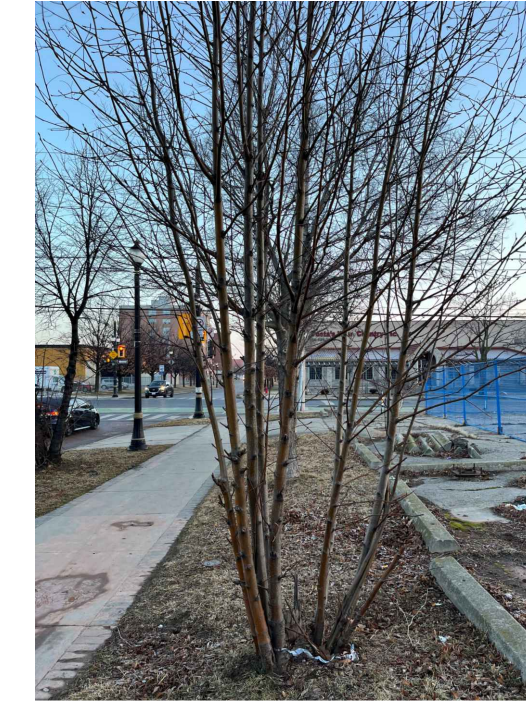
Tree 1



Tree 2



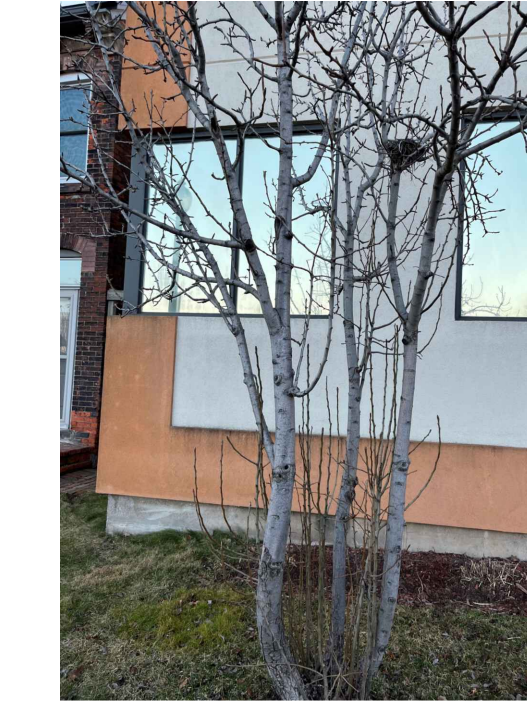
Tree 3



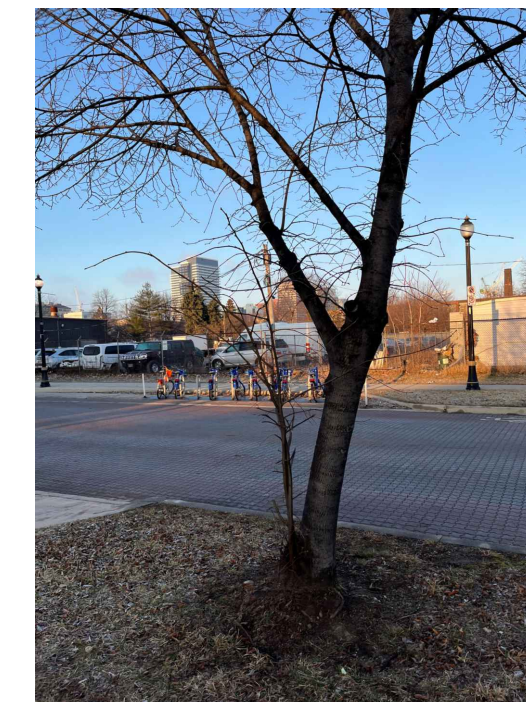
Tree 4



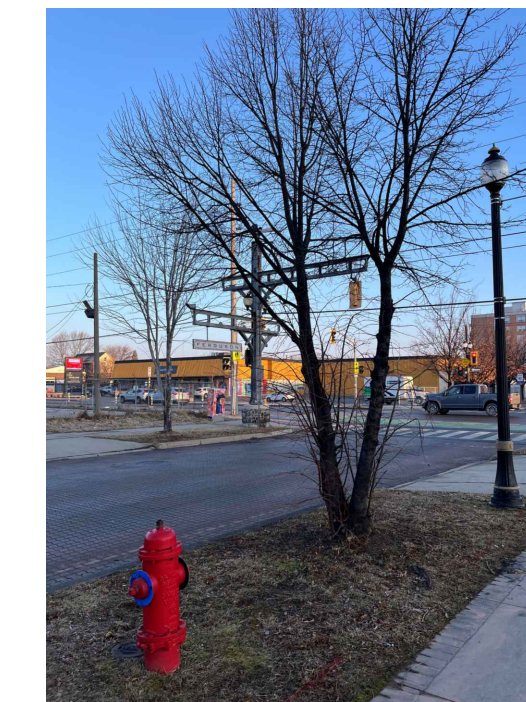
Tree 5



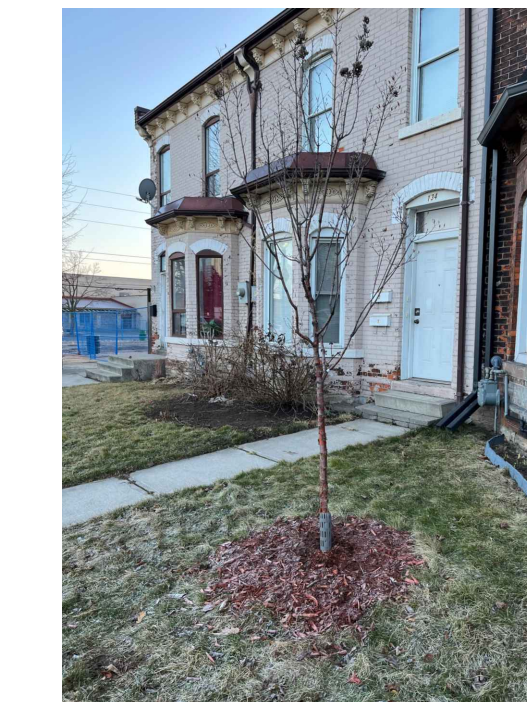
Tree 6



Tree 7



Tree 8



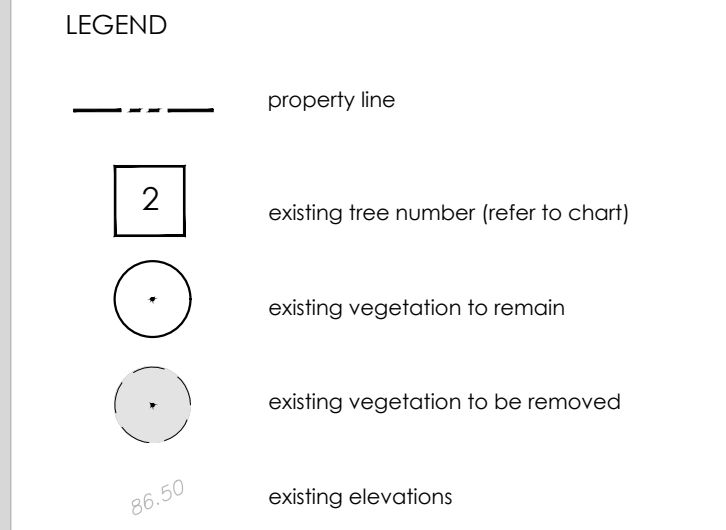
Tree 10

NOTE
 1. A 'Verification of Tree Protection Letter' by the tree management professional is to be provided to the Director of Planning at the City of Hamilton to confirm that all tree protection measures have been installed prior to the undertaking of any grading activities.
 2. Any arborist completing tree removals on-site is required to have a tree cutting licence with the City of Hamilton. Please contact the City's licensing section (licensing@hamilton.ca) for licensing or further information.

HAND PRUNING /DIGGING NOTE
NOTE:
 1. Any work within the driplines of a tree to be preserved, to be completed carefully by hand under supervision of a qualified tree professional. Any required root pruning to be completed by a qualified tree professional.

PRIVATE TREES >10cm DBH TO BE REMOVED:	1
MUNICIPAL TREES TO BE REMOVED*:	7
REQUIRED COMPENSATION TREES (1:1):	8
FUTURE STREET TREES (SEE LANDSCAPE PLAN)	7
PROPOSED PRIVATE TREES (SEE LANDSCAPE PLAN)	0
OUTSTANDING COMPENSATION TREES TO BE COMPENSATED FOR THROUGH CASH-IN-LIEU PAYMENT	1

*Removal of municipal trees requires approval from City of Hamilton Urban Forestry prior to removal.



NOT FOR CONSTRUCTION
 ISSUED FOR REVIEW & COMMENTS ONLY

NOTE:
 Vegetation inventory undertaken by Carleigh Pope, ISA Certified Arborist (ON-2578A) on 2024-02-23.

REVISIONS/ SUBMISSIONS

#	DATE	DESCRIPTION
1	2024-03-07	Issued for submission



CLIENT
 Vantage Development Corporation
MUNICIPALITY
 City of Hamilton
PROJECT
 188 Cannon Street E & 134-136 Ferguson Ave N

MUNICIPAL FILE NUMBER

SHEET
 Tree Protection Plan **L-1**

adesso design inc.
 landscape architecture

69 John Street South, Suite 250
 Hamilton, ON L8N 2B9
 t. 905.526.8876
 www.adessodesigninc.ca

ALL RIGHTS RESERVED. THIS DOCUMENT IS THE PROPERTY OF ADESSEO DESIGN INC. AND IS NOT TO BE REPRODUCED OR TRANSMITTED IN ANY FORM OR BY ANY MEANS, ELECTRONIC OR MECHANICAL, INCLUDING PHOTOCOPYING, RECORDING, OR BY ANY INFORMATION STORAGE AND RETRIEVAL SYSTEM. WITHOUT THE WRITTEN PERMISSION OF ADESSEO DESIGN INC.

