

### Project Details

Project Boundary: Baldwin St to Dundas St  
Phase: Design (2022 Install)

Funding Source: On-street Cycling 2021  
Project Length: 240 m  
Ward: 13

### Key Map



### Description

On the south side of Cootes Dr between Baldwin St and Thorpe St implement a 3.0m bicycle path adjacent to the sidewalk and between Thorpe St and Dundas St implement a 3.0m multi-use path (remove sidewalk). Baldwin St to become a bicycle boulevard with the addition of signage and pavement markings.

### Precedent Images and Visualizations



Governor's Rd, Dundas  
Bicycle path



Cootes Dr, Dundas  
Multi-use path

**Potential Impacts**

HSR Route/Area	Impacts
5 (Delaware)	Bus shelter and amenities modification
52 (Dundas Local)	

Parking Review	Impacts
Private parking lot	Private parking encroaches into right-of-way and will need to be removed to accommodate MUP
Baldwin St	Formalize “No Stopping Anytime” along north curb beside Mediacom Park

**Rationale**

Baldwin St is a direct connection between the existing multi-use path on Cootes Dr and downtown Dundas via Hatt St (bicycle lanes added in 2021); and a connection to Ogilvie (future lanes) and Creighton (2021 lanes).

The proposed new segment of cycling facility on Cootes Dr (separate from the roadway) is justified due to existing volumes on Cootes Dr and direct connectivity to existing facilities on the south side.

**Cycling Facilities Nomograph Alignment (OTM Book 18)**

Not required. Baldwin St is a low volume local street, with no existing count data.

**Strategic Alignment**

**Capital Plan**

There are no plans for any roadworks along this segment within the next 5 years.

**Transportation Master Plan**

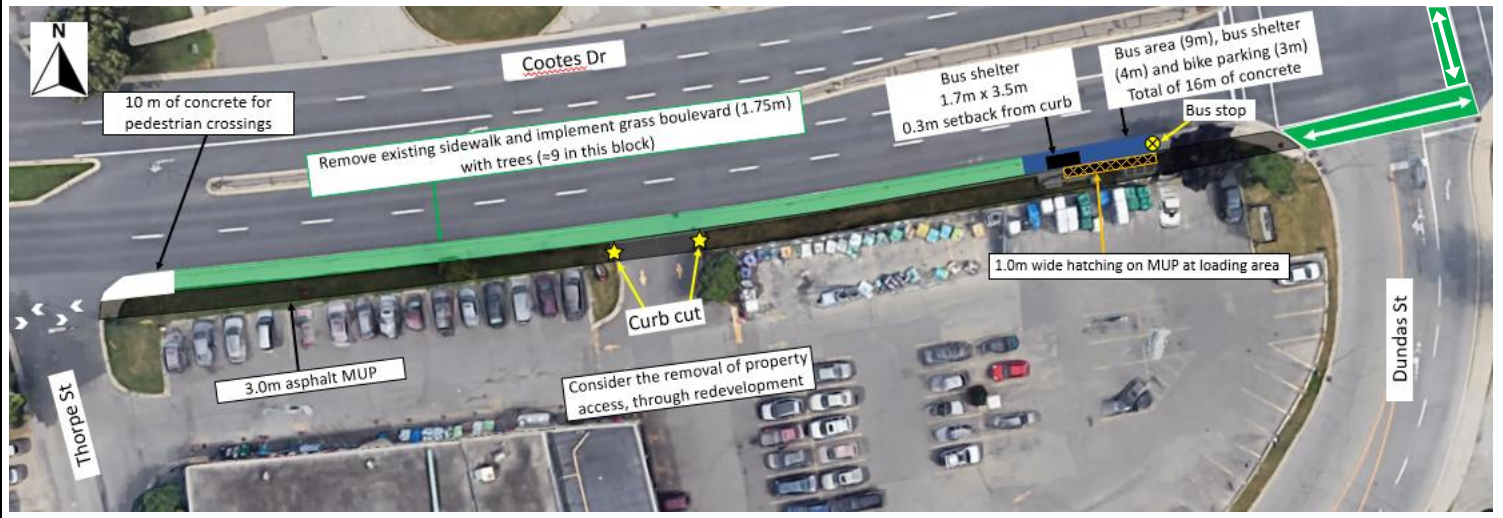
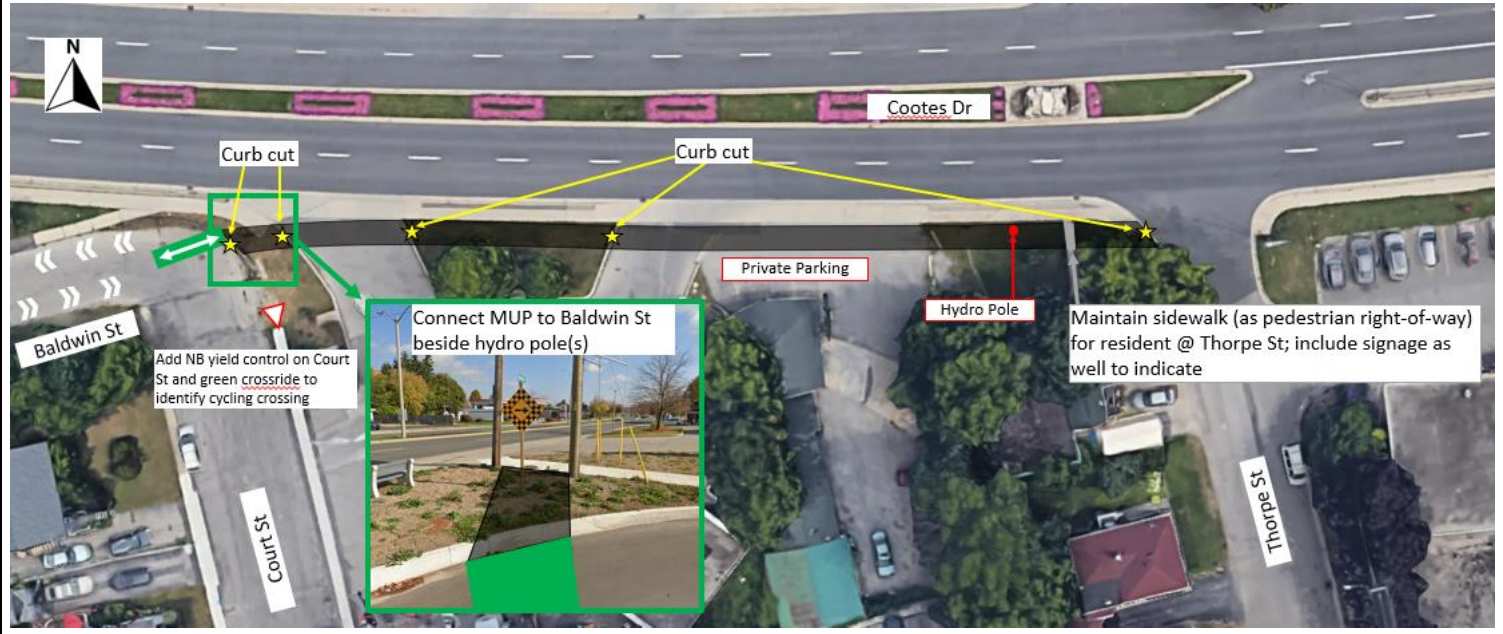
Action 15 - As part of the implementation of the cycling network, undertake an evaluation of alternatives in order to select routes which maximize safety for cyclists and promote continuity of the network across the City.

**Sustainable Mobility KPI's and Cycling Master Plan**

- Increase kilometers of cycling infrastructure
- Facilitate Pandemic Response through active transportation



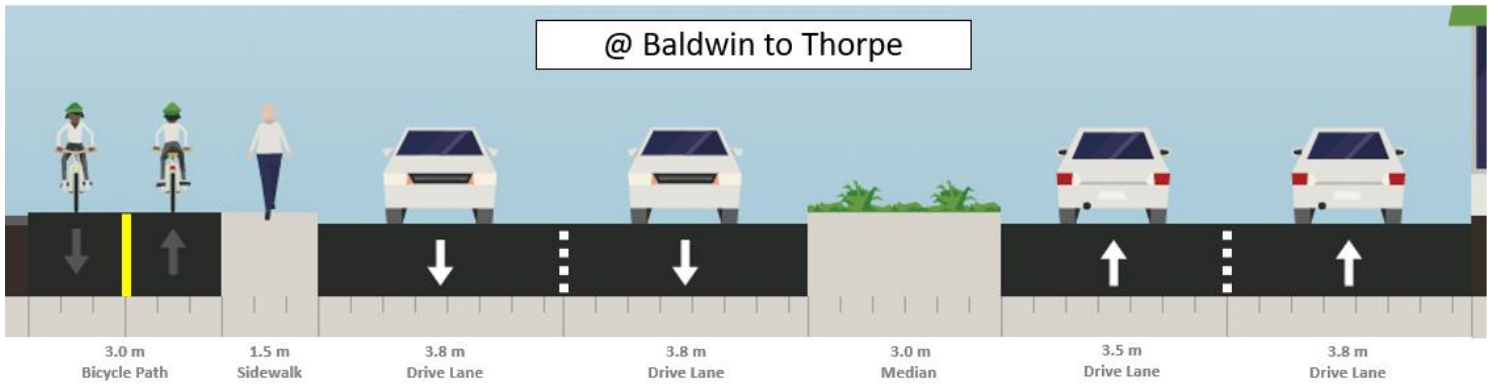
Detailed Maps



Baldwin St: to include bicycle boulevard markings and signage

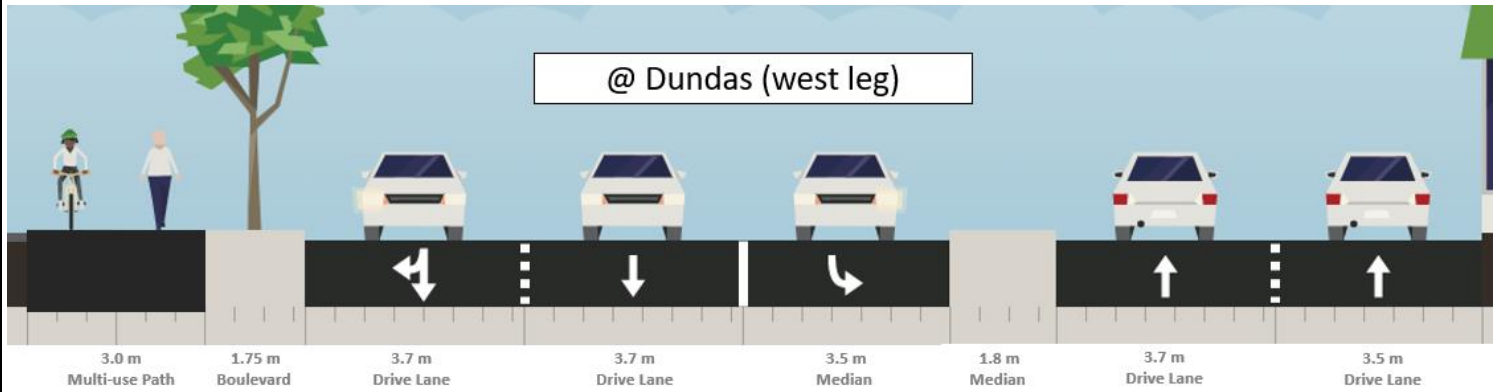
### Cross Section Details

@ Baldwin to Thorpe



3.0m bicycle path adjacent to sidewalk

@ Dundas (west leg)



3.0m multi-use path

### Project Contacts

**Project Feasibility and Outreach**

Daryl Bender, Project Manager: [daryl.bender@hamilton.ca](mailto:daryl.bender@hamilton.ca)

**Project Design and Implementation**

Mushfiqur Rahman, Senior Project Manager: [mushfiqur.rahmen@hamilton.ca](mailto:mushfiqur.rahmen@hamilton.ca)