

Project Details

Project Boundary:	Emerson St (Main St to Whitney Ave) Whitney Ave (Main St to Emerson St)	Funding Source:	On-street Cycling 2022
Phase:	Design (2022 Install)	Project Length:	2.2 km
		Ward	1

Key Map



Description

Emerson St: Add a small asphalt bicycle path adjacent to sidewalk on Main St (north side) from University Engineering plaza to Emerson St. Between Main St and Sussex St, add a bi-directional cycle track on the west side. Incorporate existing bus stop south of Main St into the cycle track design. Add a northbound bike box on the south approach of Emerson St @ Sussex St to transition between uni-directional and bi-directional bicycle lanes. Between Sussex St and Whitney Ave add barrier separated bicycle lanes on each side. On-street parking to be removed.

Whitney Ave: Add barrier separated bicycle lanes between Main St and Emerson St. Maintain some on-street parking along Alexander Park; rest of on-street parking planned to be removed.

Precedent Images and Visualizations



Hunter St, Hamilton
Bi-directional cycle track with
precast curbs and flexposts



Hatt St, Hamilton
Bicycle lanes with precast
curbs and flexposts

Potential Impacts

HSR Route/Area	Impacts
5 (Delaware)	Both transit routes run along Whitney Ave and Emerson St.
51 (University)	Minimal impact is anticipated – all bus areas will merge into planned bicycle lanes except the one identified floating bus stop required on Emerson south of Main St.

Parking Review

Emerson: existing 1 HR 8-6 Mon-Fri on both sides to be removed. Parking studies indicate a demonstrated demand at two locations; close to shops along Main St and by a local pub and coffee shop at Royal Ave. Adjacent side streets (Royal Ave, Holmes Ave) can accommodate on-street parking; currently both streets permit parking for 2 HR 8-6 Mon-Fri. TP staff is confirming capacity on side streets.

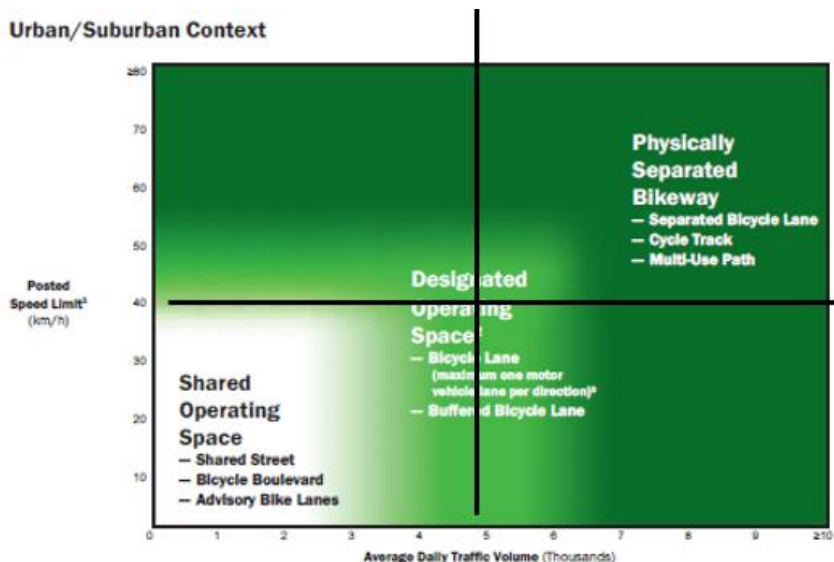
Whitney: existing parking regulations vary throughout corridor. Parking studies indicate a demonstrated demand at two locations; 1) a short length of commercial shops on the south side close to Main St and 2) both sides of Whitney Ave near St. Mary’s HS and Alexander Park. There is insufficient width (unless we exclude a buffer; not recommended) to accommodate on-street parking west of Mericourt Rd, in front of Seronto Apartments. Also narrow width to accommodate bicycle lanes and on-street parking by Alexander Park, see technical notes for 4 options being reviewed.

Rationale

These bicycle lanes will provide safer cycling mobility to schools, recreation, and businesses in the West Hamilton neighbourhood; and create critical connections between existing cycling facilities on Main St/ Wilson St Hill, McMaster University, and the Hamilton-Brantford Rail Trail.

According to the cycling facilities nomograph (OTM Book 18) and the complete streets audit tool, these collector streets should have a designated cycling operating space, which will be marked with painted buffers and flexposts at major intersections.

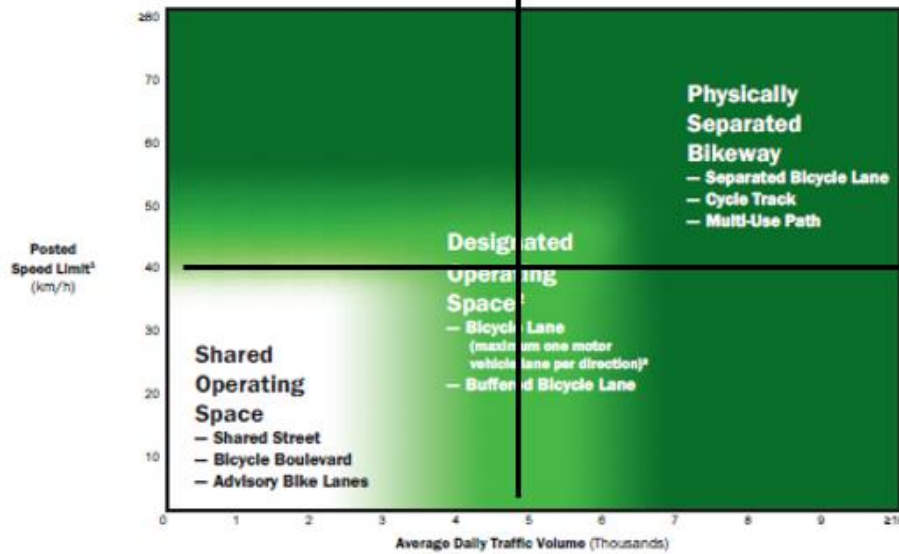
Cycling Facilities Nomograph Alignment (OTM Book 18)



Emerson St ADT (2019)
 @ Main St - 4,900 (2,900 SB)

Cycling Facilities Nomograph Alignment (OTM Book 18)

Urban/Suburban Context



Whitney Ave ADT
 @ Main St (2019) – 4,900
 (2,120 NBRT from Main)

@ Mericourt (2018)
 4,250 (east leg)
 4,580 (west leg)

Strategic Alignment

Capital Plan

There are no plans for any capital works along this segment within the next 5 years.

Transportation Master Plan

Action 15 - As part of the implementation of the cycling network, undertake an evaluation of Alternatives in order to select routes which maximize safety for cyclists and promote continuity of the network across the City

Sustainable Mobility KPI's and Cycling Master Plan

Increase kilometers of cycling infrastructure

Detailed Maps (Concept Plans)

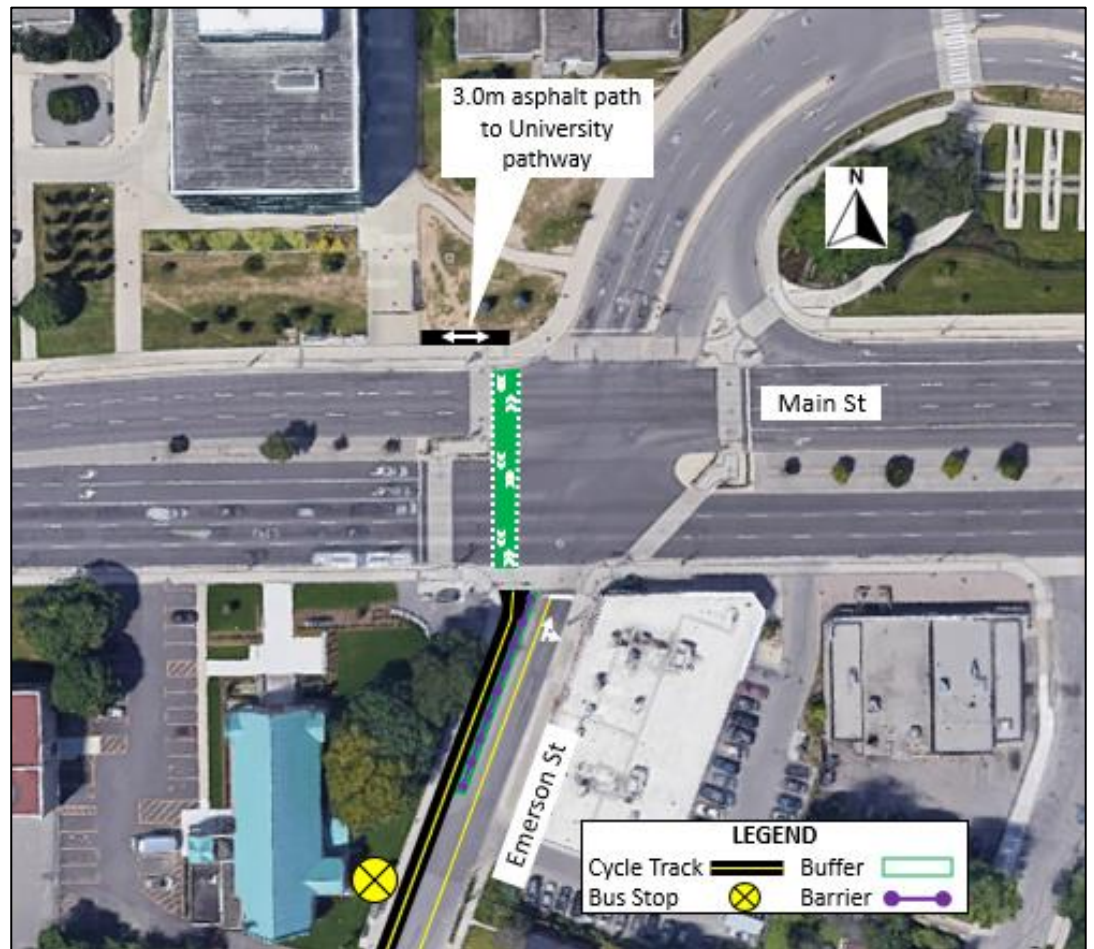


Between Main St and Whitney Ave

Detailed Maps (Concept Plans)



Emerson St @
Sussex St

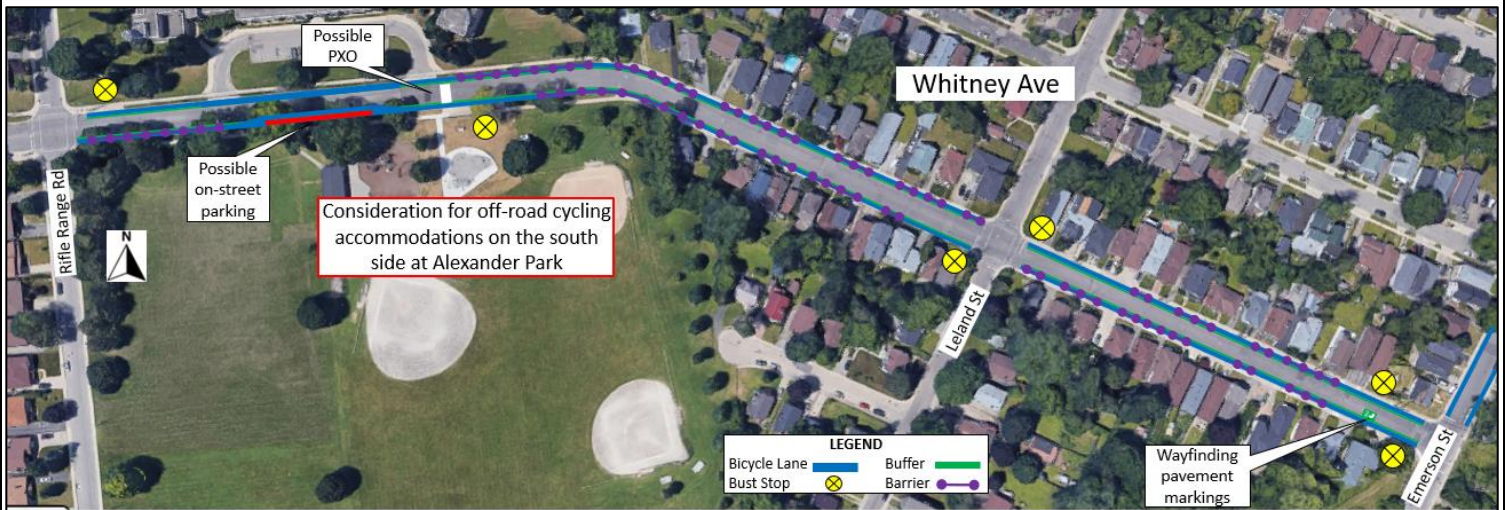


Emerson St @
Main St

Detailed Maps (Concept Plans)

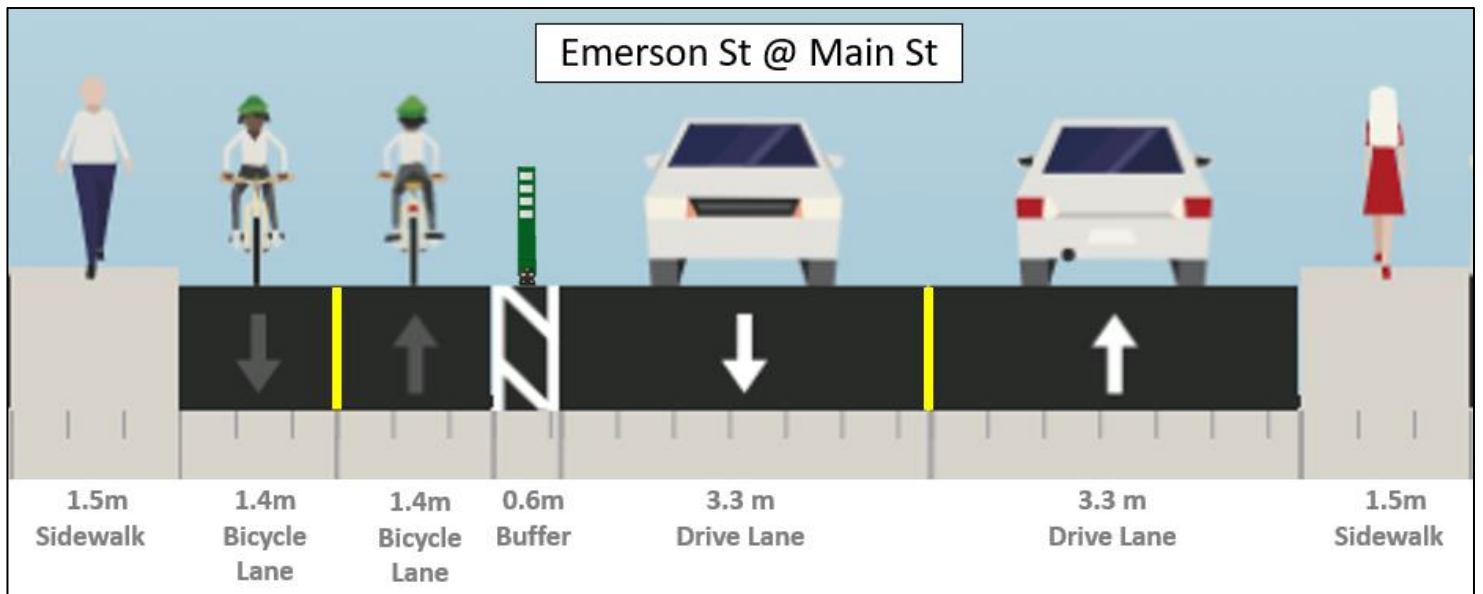


Between Main St and Rifle Range Rd

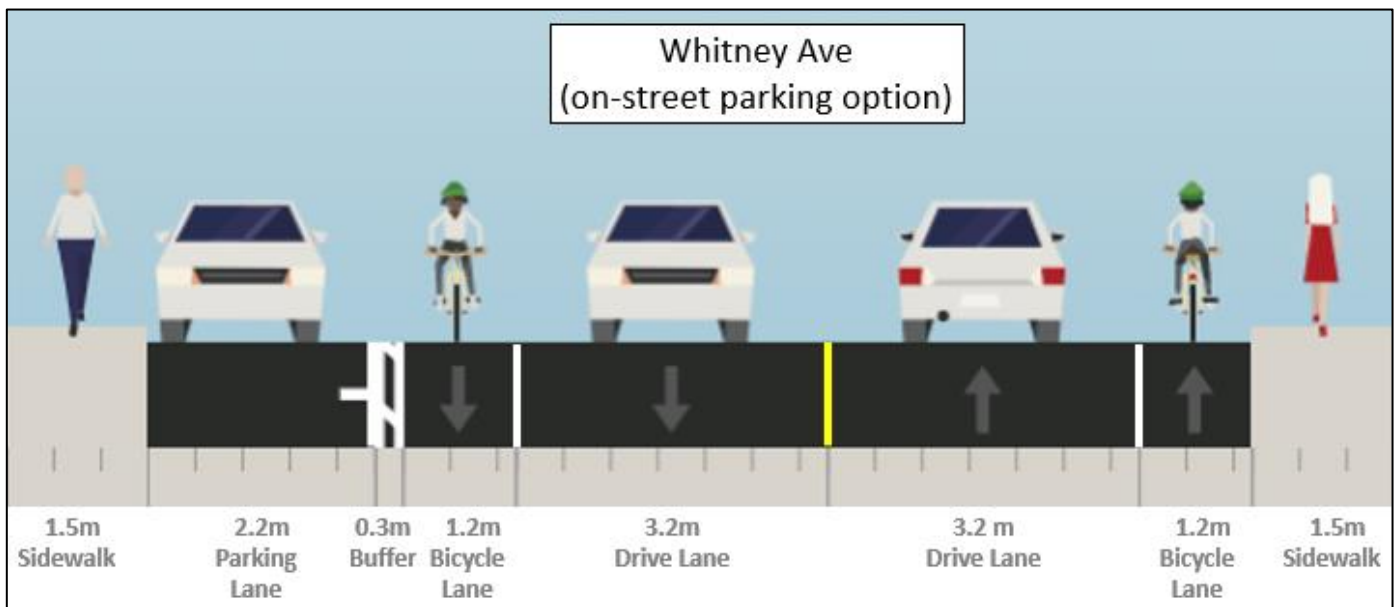
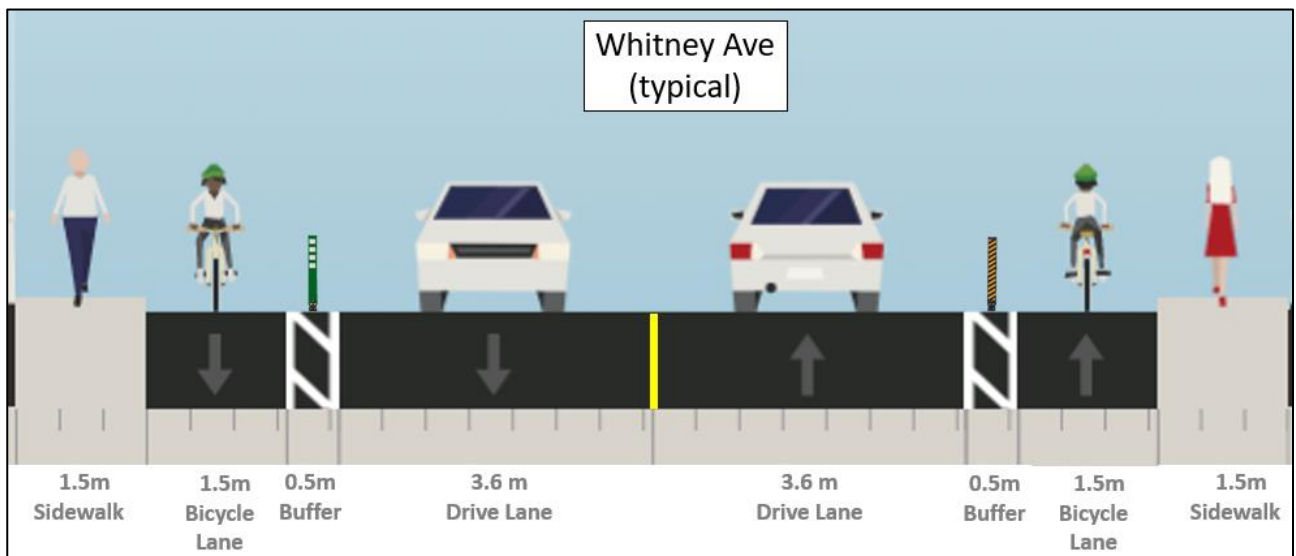
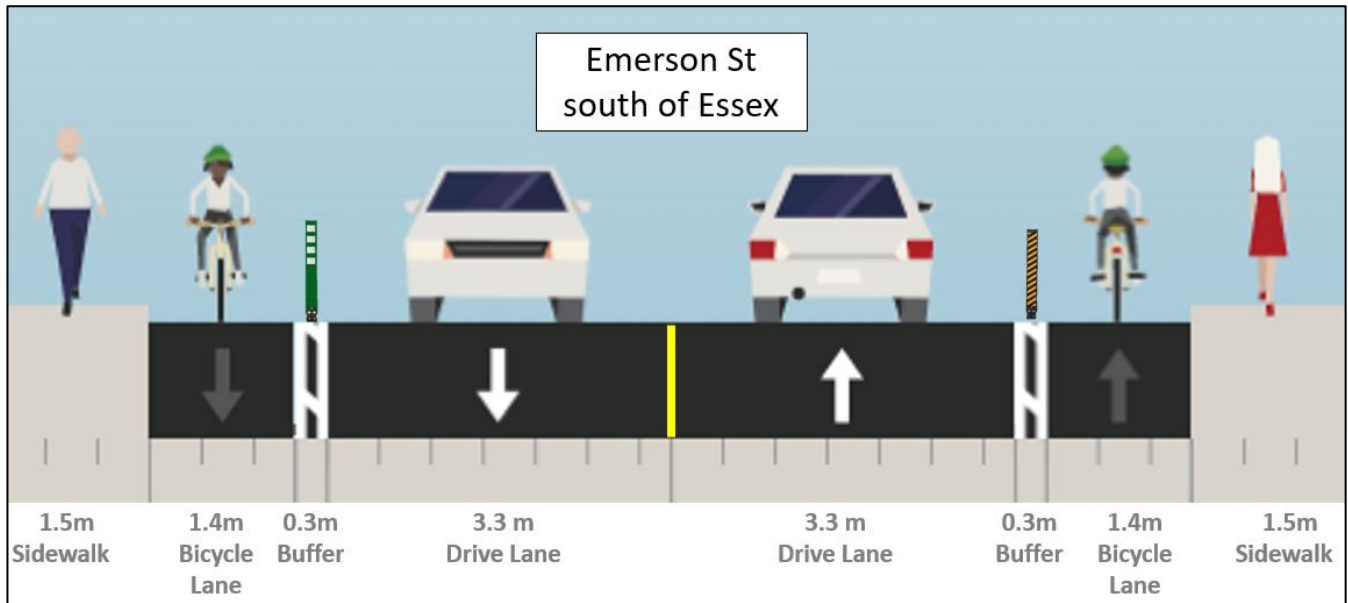


Between Rifle Range Rd and Emerson St

Cross Section Details



Cross Section Details



Project Contacts

Project Feasibility and Outreach

Danny Pimentel, Active Transportation Project Manager: danny.pimentel@hamilton.ca

Project Design and Implementation

Bakir Fayad, Project Manager, Pedestrian Cycling and Engineering: bakir.fayad@hamilton.ca