



## **Indigenous Engagement Strategy Elfrida Urban Boundary Expansion, City of Hamilton**

Prepared for: Elfrida Community Builders Group  
Inc.

Date: November 2024

CIPS Project Lead: Sara Jane Souliere

1109 Mississauga St,

Curve Lake First Nation, ON K0L 1R0

[www.indigenousaware.com](http://www.indigenousaware.com)

(705) 657-1126

## **TABLE OF CONTENTS**

<b>1</b>	<b>Introduction .....</b>	<b>3</b>
<b>2</b>	<b>Proposal Description.....</b>	<b>3</b>
<b>3</b>	<b>Engagement and Communication .....</b>	<b>4</b>
<b>4</b>	<b>Indigenous Rights Holders.....</b>	<b>5</b>
<b>5</b>	<b>Record of Prior Engagement / Outreach .....</b>	<b>5</b>
<b>6</b>	<b>Communication and Engagement with Indigenous Rights Holders .....</b>	<b>6</b>
<b>7</b>	<b>Conclusion .....</b>	<b>6</b>

## 1 INTRODUCTION

This Indigenous Engagement Strategy has been prepared in relation to an application for amendments to the Rural Hamilton Official Plan (the “RHOP”) and the Urban Hamilton Official Plan (the “UHOP”) to remove the lands from the ROP, and to expand the City’s Urban Boundary to include the Elfrida lands (the “site” or “Elfrida”) to allow for the future development of a new, complete urban community that incorporates a wide range of uses.

This strategy outlines the approach the applicant team is proposing with regards to engaging with Indigenous Rights Holders and Indigenous communities. Incorporating Indigenous engagement into the proposal requires a thoughtful, holistic, inclusive and respectful approach. The strategy demonstrates a commitment to appropriate engagement with interested Indigenous Rights Holders and Indigenous communities as part of the prospective Urban Boundary Expansion application, to ensure that feedback is heard and considered.

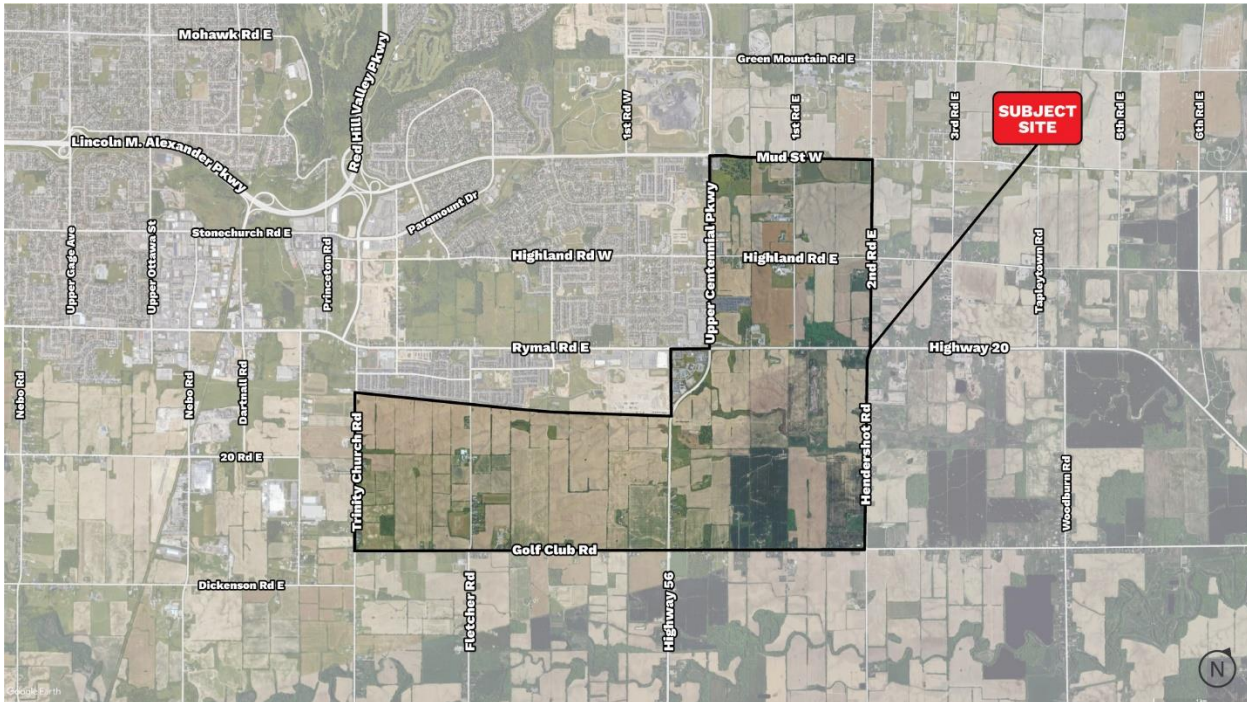
The Indigenous Engagement Strategy will be aligned with and coordinated in conjunction with the approach to public consultation and outreach. For an understanding of the approach to public engagement, please refer to the Public Consultation Strategy (“PCS”) included in the submission materials.

## 2 PROPOSAL DESCRIPTION

Elfrida represents a unique opportunity to plan for and accommodate the City’s future growth in a manner consistent with previously prepared reports, studies and infrastructure planning completed by or on behalf of the City. The proposed Settlement Area Boundary Expansion (‘SABE’) to include the site in the City’s Urban Boundary through an Urban Boundary Expansion (‘UBE’) Official Plan Amendment (‘OPA’) sets the context for the future growth of Elfrida and the City of Hamilton. The UBE OPA will establish Elfrida as an appropriate location for a future transit oriented, urban, complete community that could accommodate the City’s future growth.

The proposal contemplates an amendment to the Rural Hamilton Official Plan to remove Elfrida from the RHOP and an amendment to the Urban Hamilton Official Plan to add Elfrida to the UHOP. The proposed Official Plan Amendments establish a policy framework that outlines subsequent steps, including the supporting plans and studies, to support the preparation of a future Secondary Plan to establish detailed land uses, road networks, intensification areas, among other matters, within Elfrida.

Figure 1 - Elfrida Lands - Boundaries



### 3 ENGAGEMENT AND COMMUNICATION

When initiating the engagement process, it is of paramount importance that the Applicant provide clear and accurate information on the Project. This will allow the Applicant to clearly address sensitivities that Rights Holders may have about the proposed project. Meaningful engagement provides a great opportunity to build broad community and public support for the future development of a new, complete urban community that incorporates a wide range of uses. Given the Applicant’s ongoing work with building a partnership, the team is well positioned to understand key community concerns and issues that may arise with this Project. The Applicant will lead the engagement on this Project with support from the consulting team, Cambium Indigenous Professional Services (CIPS). CIPS is an Indigenous owned and operated environmental organization whose team is uniquely all First Nations individuals. Formed in 2014, they have recruited experienced professional staff with expertise in all aspects of First Nation management and operations. They are solutions-based, offering integrated professional services designed

to provide governments, corporations, and individuals with innovative and sustainable answers to everyday issues.

CIPS has established a good working relationship and experience with the local communities to be engaged in this Project. This, along with CIPS' expertise with Indigenous engagement, will be leveraged to ensure that community feedback is adequately incorporated into the Project plan. The Applicant will be on the front lines engaging with stakeholders and communities, and decision-makers to foster meaningful relationships and ensure all parties are provided the opportunity to learn more about the Project and ensure genuine and respectful dialogue.

## **4 INDIGENOUS RIGHTS HOLDERS**

The following Indigenous Rights Holders and Indigenous communities have been notified as part of our initial outreach, however if there are assertions of rights by other communities, we will engage with those members as well. The communities are:

- Mississaugas of the Credit First Nation,
- Six Nations of the Grand River,
- Haudenosaunee Development Institute,
- Huron-Wendat,
- Métis Nation of Ontario, and
- Local Urban First Nation Centres.

## **5 RECORD OF PRIOR ENGAGEMENT / OUTREACH**

City of Hamilton Staff undertook engagement in 2022 respecting the amendments to the Rural and Urban Hamilton Official Plans as part of their Growth Related Integrated Development Strategy ("GRIDS") work. The technical studies associated with the GRIDS work demonstrated that the City required the introduction of additional lands, including the Elfrida Lands, within their Urban Boundary to accommodate their forecasted growth.

The engagement for GRIDS included outreach to 11 local Indigenous community contacts and 15 Indigenous communities. These meetings were held in March 2022 with the Six Nations of the Grand River Territory, the Hamilton Regional Indian Centre, and the Mississaugas of the Credit First Nation, in addition to engagement with other key interested parties and the broader public.

## **6 COMMUNICATION AND ENGAGEMENT WITH INDIGENOUS RIGHTS HOLDERS**

### **Initial Communication**

- Distribution of information materials (via email or post) to local First Nations, Métis, and Indigenous organizations regarding the proposed development.
- Inclusion of a designated point of contact to facilitate consistent communication.
- Timing of communication to occur prior to or shortly after application submission.

### **Meeting Opportunities**

- Offering in-person or virtual meetings with local Métis and Indigenous community members and organizations.
- Hosting Community Open Houses at accessible locations, such as Mississaugas of the Credit First Nation and Six Nations of the Grand River. These informal, drop-in events aim to maximize convenience and participation.

### **Flexible Engagement Formats**

- Providing technical studies and information upon request.
- Adjusting engagement formats based on community preferences, including one-on-one discussions or alternative forums.

### **Documentation and Reporting**

- Preparing an Indigenous Engagement Summary and Comment Response document for City Staff, summarizing consultation activities and how feedback was addressed.

## **7 CONCLUSION**

The Elfrida Community Builders Group Inc. are pleased to discuss the proposed Indigenous Engagement Strategy outlined in this document with Indigenous Rights Holders, Indigenous communities, and City Staff, and to adjust the approach based on feedback. This strategy has been developed to align with the Public Consultation Strategy, be responsive to the local context, and be flexible and adaptable to allow for a broad range of voices to continue contributing to the discussion and shape the proposal.