

APPENDIX B
STAGE 3 ARCHAEOLOGICAL
ASSESSMENT

**Stage 3 Archaeological Assessment of
Pre-contact Sites AhGx-693, 694, 696, and
The Coulson Site (AhGx-691)
Johnson Tew Community Park and Aboretum
Part of Lot 11, Concession 2
Geographic Township of Flamboro West,
Wentworth County, Now the City of Hamilton**

Original Report

Prepared for:

**Landscape Architectural Services
City of Hamilton Public Works Department**
77 James Street North, Suite 400
Hamilton, Ontario L8R 2K3
T 905.546.2424
F 905.546.4515

**Culture Programs Unit
Ministry of Tourism, Culture and Sport**
401 Bay Street, Suite 1700
Toronto, Ontario M7A 0A7
T 416-314-7148
F 416-314-7175

Archaeological Licence P375 (Kiara Beaulieu)
MTCS PIF# P375-0014-2013, P375-0015-2013,
P375-0016-2013, and P375-0017-2013
ASI File# 12TE-039

18 August, 2014



Archaeological Services Inc.

528 Bathurst St.
Toronto, Ontario
Canada, M5S 2P9

T 416-966-1069
F 416-966-9723
info@iASI.to/www.iASI.to

**Stage 3 Archaeological Assessment of
Pre-contact Sites AhGx-693, 694, 696, and the Coulson Site (AhGx-691)
Johnson Tew Community Park and Arboretum
Part of Lot 11, Concession 2
Geographic Township of Flamboro West
Wentworth County, Now the City of Hamilton**

EXECUTIVE SUMMARY

Archaeological Services Inc. (ASI) was retained by the City of Hamilton, Ontario to conduct a Stage 3 archaeological assessment of the Coulson site (AhGx-691) and the pre-contact sites AhGx 693, 694, and 696, located in the Johnson Tew Community Park and Arboretum, Project No.: OS2601.17.PG, (Professional Consultant Services Roster, Reference Number C12-06-10), on part of Lot 11, Concession 2, in the Geographic Township of Flamboro West, Wentworth County, now the City of Hamilton, Ontario. The Stage 3 assessment was completed in November 2013 under the project direction of Ms. Kiara Beaulieu (MTCS PIF# P375-0014-2013, P375-0015-2013, P375-0016-2013, and P375-0017-2013) and the field direction of Ms. Kiara Beaulieu (R369) and Mr. Wesley Oldham (R292).

The historic Coulson site (AhGx-691), and pre-contact sites AhGx-693, 694, and 695 were registered in the Ontario Archaeological Sites database subsequent to a Stage 2 assessment of Part of Lot 11. A Stage 3 assessment was recommended for all four sites to determine the nature and extent of cultural deposits at each. This assessment was initiated on October 24, 2013, and continued until November 27, 2013.

The Stage 3 assessment for each site included a CSP followed by systemic one metre square unit excavations within an area defined by the CSP and continuing until artifact yields dropped. A total of 161 units were excavated over an approximate total area of 90 m north-south by 90 m east west. This includes 67 units at the Coulson site (AhGx-691), 42 units at AhGx-693, 16 units at AhGx-694, and 36 units at AhGx-696. All units were excavated stratigraphically through the ploughzone to sterile subsoil.

Archival research, supported by the recovered artifact assemblage (n=2,007 Euro-Canadian artifacts) and excavation results, indicates that the Coulson site (AhGx-691) represents an occupation that started circa 1830 and continued into the 1870s. Most of the time span of occupation of this site dates to before 1870 and as such it represents a site of cultural heritage value. Therefore, the Euro-Canadian component of this property is considered to be archaeologically significant and warrants Stage 4 mitigation, to be in the form of avoidance and protection.

AhGx-693 dates to the Early Woodland period (800-400 BC) and yielded 137 lithic artifacts. The yields of lithic artifacts from unit excavation were generally low with the exception of four units in the approximate centre of the surface scatter which had yields of ten or more pieces. AhGx-696 yielded 121 lithic artifacts. Unit excavation yields were generally low with the exception of a single unit. Both represent sites of cultural heritage value and require Stage 4 mitigation, to be in the form of avoidance and protection.

Given the low density of material encountered at AhGx-694, the site is not deemed to be a cultural heritage resource and should be considered clear of further archaeological concern.

Therefore, short term avoidance during construction and long term protection will be the Stage 4 mitigative option with respect to the Coulson site (AhGx-691), AhGx-693, and AhGx-696.



**ARCHAEOLOGICAL SERVICES INC.
PLANNING DIVISION**

PROJECT PERSONNEL

<i>Project Manager:</i>	Eva MacDonald, MSc (P125), Senior Archaeologist and Manager of Historical Archaeology David Robertson, MA (P372) Senior Archaeologist and Manager of the Planning Division
<i>Project Director:</i>	Kiara Beaulieu, MA (R369), Staff Archaeologist
<i>Field Directors:</i>	Kiara Beaulieu Wesley Oldham, BA Hons (R292), Staff Archaeologist
<i>Field Archaeologists:</i>	Rob Wojtowicz, BSc (R291), Staff Archaeologist Simon Newcombe, BA Hons Adam Cassel, BA Elizabeth Matwey, BA Chris Thorne, BA Nina Mittendorf, MSc Trieneke Gastmeir, MA
<i>Laboratory Processing:</i>	Alexis Dunlop, MSc (R377), Manager of Laboratory Services Caitlin Coleman, MA, Assistant Manager of Laboratory Services Nina Mittendorf
<i>Artifact Inventory:</i>	Debbie Steiss, MA (PO49), Senior Archaeologist, Partner and General Manager Wendy Solis, BA Hons
<i>Archival Research:</i>	Colin McFarquhar, PhD
<i>Report Preparation:</i>	Johanna Kelly, MSc (P1017), Biological Anthropologist and Staff Archaeologist Debbie Steiss
<i>Report Graphics:</i>	Blake Williams, MA (P383), Staff Archaeologist and Geomatics Specialist
<i>Report Reviewers:</i>	Eva MacDonald David Robertson



TABLE OF CONTENTS

EXECUTIVE SUMMARY i
 PROJECT PERSONNEL..... ii
 TABLE OF CONTENTS iii
 1.0 PROJECT CONTEXT 1
 1.1 Development Context..... 1
 1.2 Historical Context 1
 1.3 Archaeological Context 3
 2.0 FIELD METHODS 4
 2.1 The Coulson Site (AhGx-691) 4
 2.2 AhGx-693 5
 2.3 AhGx-694 5
 2.4 AhGx-696 6
 3.0 RECORD OF FINDS 6
 3.1 The Coulson site (AhGx-691)..... 6
 3.1.1 *Potential Features* 6
 3.1.2 *Artifact Distribution*..... 6
 3.1.3 *Artifact Inventory*..... 7
 3.2 AhGx-693 12
 3.2.1 *Potential Features* 12
 3.2.2 *Artifact Distribution*..... 12
 3.2.3 *Artifact Inventory*..... 12
 3.3 AhGx-694 14
 3.3.1 *Potential Features* 14
 3.3.2 *Artifact Distribution*..... 14
 3.3.3 *Artifact Inventory*..... 14
 3.4 AhGx-696 15
 3.4.1 *Potential Features* 15
 3.4.2 *Artifact Distribution*..... 15
 3.4.3 *Artifact Inventory*..... 15
 3.5 Inventory of the Documentary Record 17
 4.0 ANALYSIS AND CONCLUSIONS 18
 5.0 RECOMMENDATIONS 19
 6.0 ADVICE ON COMPLIANCE WITH LEGISLATION..... 21
 7.0 BIBLIOGRAPHY AND SOURCES 22
 8.0 MAPS AND FIGURES 24
 9.0 IMAGES 33

LIST OF FIGURES

Figure 1: The subject property where the Coulson site (AhGx-691), AhGx-693, 694, and 696 are located 24
 Figure 2: The subject property overlaid on the 1875 *Illustrated Historical Atlas of the County of Wentworth*.... 25
 Figure 3: The Coulson site (AhGx-691), AhGx-693, 694, and 696 site boundary plan view 26
 Figure 4: Photo locations from the Stage 3 archaeological assessment of the Coulson site (AhGx-691), AhGx-693, 694, and 696 27
 Figure 5: Results of the CSP and unit excavations for the Coulson site (AhGx-691)..... 28
 Figure 6: Results of the CSP and unit excavations for AhGx-693 29
 Figure 7: Results of the CSP and unit excavations for AhGx-694 30



Figure 8: Results of the CSP and unit excavations for AhGx-69631
Figure 9: All sites to be protected (AhGx-691, 693, and 696) and suggested 10 m buffer within City of Hamilton
development plans 32

LIST OF TABLES

Table 1: Archaeological Sites Registered Within 1 km of the Subject property..... 3
Table 2: the Coulson site (AhGx-691) Artifact Storage Information 7
Table 3: Artifacts from the Coulson site (AhGx-691) by Functional Class and Provenience 7
Table 4: Refined Ceramic Decorative Styles and Approximate Date Ranges in Ontario 10
Table 5: Unique Teaware in the Coulson (AhGx-691) Assemblage 10
Table 6: AhGx-693 Artifact Storage Information 12
Table 7: Lithic Artifacts Recovered During the Stage 3 at AhGx-693.....13
Table 8: AhGx-694 Artifact Storage Information 14
Table 9: AhGx-696 Artifact Storage Information15
Table 10: Lithic Artifacts Recovered During the Stage 3 at AhGx-696..... 16
Table 11: Material Curated by ASI from the Coulson site (AhGx-691) and AhGx-693, 694, and 696.....17

LIST OF IMAGES

Plate 1: CSP at the Coulson site (AhGx-691), looking north. 33
Plate 2: Stage 3 unit excavations at the Coulson site (AhGx-691), looking northeast..... 33
Plate 3: North profile of unit 500N-230E showing excavation through ploughzone into subsoil 34
Plate 4: North profile of unit 520N-180E showing excavation through ploughzone into subsoil..... 34
Plate 5: CSP at AhGx-693, looking northwest..... 35
Plate 6: CSP at AhGx-694, looking southwest..... 35
Plate 7: CSP recording using the total station at AhGx-696, looking southeast..... 36
Plate 8: Pearlware tableware decorated with straight edgware motif, unpainted (Cat. #140)..... 36
Plate 9: Assorted mid-nineteenth century ceramics recovered from the Coulson site. Top. Left, blue evenly scalloped refined white earthenware flatware (Cat. #396); centre, red evenly scalloped refined white earthenware flatware (Cat. #487); right, blue chicken claw edgware flatware of indeterminate ware type (Cat. #61). Bottom. Left, hand-painted monochrome blue refined white earthenware hollowware (Cat. #514); right, black transfer printed refined white earthenware hollowware (Cat. #429)..... 37
Plate 10: Assorted late nineteenth century ceramics recovered from the Coulson site. Top. Left wheat pattern ironstone flatware (Cat. #110); centre, two factory slipped refined white earthenware hollowware sherds (Cat. #359 and #358); right, blue spongeware refined white earthenware hollowware (Cat. #511). Bottom. Left, blue transfer print refined white earthenware flatware (Cat. #495); left-centre, blue straight edgware refined white earthenware flatware (Cat. #354); right, two examples of hand painted late palette refined white earthenware hollowware (Cat. #515 and #491) 37
Plate 11: Unique vessels identified from the Coulson site. Top. Left, undecorated thin refined white earthenware saucer (Cat. #416); centre, blue spongeware refined white earthenware saucer (Cat. #510); right, undecorated refined white earthenware saucer. Bottom, hand-painted late palette refined white earthenware teacup (Cat. #395), centre, blue spongeware refined white earthenware teacup (Cat. #423); right, blue spongeware refined white earthenware teacup with hand painted annular band at rim (Cat. #643). 38
Plate 12: Selected glass identified from the Coulson site. Left, white milkglass teacup (Cat. #856), right, bottom of colourless tumbler glass (Cat. #852). 38
Plate 13: Silver plated table spoon from the Coulson site (Cat. #1185)..... 39
Plate 14: Close-up of impressed mark “SILVER PLATED” on underside of spoon handle (Cat. #1185)..... 39
Plate 15: Smoking pipe fragments recovered from the Coulson site. Left, undecorated stem with tapered bite (Cat. #991); centre, bowl fragment with tiers of vertical moulding (Cat. #990); right, bowl fragment with unidentified moulded design (Cat. #985). 40
Plate 16: Mouth harp recovered from the Coulson site (Cat. #1250). 40



Plate 17: A selection of lithics recovered from AhGx-693 unit 510N-165E. Top, left, Kettle point piece of shatter (Cat. #L84); centre, Onondaga secondary knapping flake (Cat. #L79); right, Lockport secondary retouch flake (Cat. #L82). Bottom, left, Onondaga flake fragment (Cat. #L80); centre, Lockport secondary knapping flake (Cat. #L81); right, Lockport flake fragment (Cat. #L83). 41

Plate 18: Formal tools recovered from AhGx-693. Left, Bois blanc middle stage biface (Cat. #L18), centre, Bois blanc late stage biface (Cat. #L37), right, Onondaga Early Woodland Meadowood projectile point fragment (Cat. #L34)..... 41

Plate 19: All lithics recovered from AhGx-694. Left, Onondaga Middle Woodland Snyders projectile point (Cat. #L5); right, Kettle point secondary retouch flake (Cat. #L6). 42

Plate 20: A selection of lithics recovered from AhGx-696 unit 505N-212E. Left, piece of Lockport shatter (Cat. #L54); centre, Lockport secondary knapping flake (Cat. #L52); right, Lockport secondary retouch flake (Cat. #L53)..... 42

Plate 21: Formal tools recovered from AhGx-696. Top, left, Onondaga projectile point tip (Cat. L35), centre, Lockport scraper (Cat. #L54), right, Onondaga scraper (Cat. #L84). Bottom, left, Lockport biface fragment (Cat. #L62), right, Bois blanc end scraper (Cat. #L90). 43

APPENDICES

- APPENDIX A: The Coulson site (AhGx-691) Artifact Inventory
- APPENDIX B: AhGx-693 Artifact Inventory
- APPENDIX C: AhGx-694 Artifact Inventory
- APPENDIX D: AhGx-696 Artifact Inventory
- APPENDIX E: Supporting Letter of Intent to Protect Sites, City of Hamilton



1.0 PROJECT CONTEXT

1.1 Development Context

Archaeological Services Inc. (ASI) was retained by the City of Hamilton, Ontario to conduct a Stage 3 archaeological assessment of the Coulson site (AhGx-691) and the pre-contact sites AhGx 693, 694, and 696, located in the Johnson Tew Community Park and Arboretum, Project No.: OS2601.17.PG, (Professional Consultant Services Roster, Reference Number C12-06-10), on part of Lot 11, Concession 2, in the Geographic Township of Flamboro West, Wentworth County, now the City of Hamilton, Ontario (Figure 1). The work was conducted ahead of the proposed development of the property into park space (ASI 2014: Figure 2), as required by the *Ontario Planning Act*.

The assessment was conducted under the project management of Ms. Eva MacDonald and Mr. David Robertson and project and field direction of Ms. Kiara Beaulieu under the archaeological licence P375 issued to Ms. Beaulieu (MTCS PIF# P375-0014-2013, P375-0015-2013, P375-0016-2013, and P375-0017-2013) in accordance with the *Ontario Heritage Act* (RSO 1990). The *Planning Act* triggered this archaeological assessment. Ms. Kiara Beaulieu and Mr. Wesley Oldham (R292) acted as field directors. All activities carried out during this assessment were completed in accordance with the terms of the *Ontario Heritage Act* and the Ministry of Tourism, Culture, and Sport's 2011 *Standards and Guidelines for Consultant Archaeologists* (MTCS 2011).

Mr. Joseph Yu of the City of Hamilton granted Archaeological Services Inc. permission to enter the property and carry out the necessary activities for the completion of the Stage 3 assessment on December 6, 2012. The following report summarizes the study background, field methods, contextual history, and concludes with an evaluation of the significance of the Coulson site (AhGx-691), AhGx-693, 694, and 696.

Appendices A through D contain the artifact catalogues of all the cultural material recovered by Archaeological Services Inc. as a result of this project. Appendix E contains communication with the City of Hamilton regarding avoidance and protection strategies. Site sensitive information has been submitted in a separate report for this project (ASI 2014; MTCS PIF# P375-0014-2013, P375-0015-2013, P375-0016-2013, and P375-0017-2013) and includes more detailed information about the location of the sites, including their location within the City of Hamilton.

1.2 Historical Context

Early Development and Survey of West Flamboro Township, Wentworth County

Augustus Jones surveyed a line through the township in 1793 for the Dundas Road, but the settlement of both East and West Flamboro did not begin until 1797 after John Stegman began a new survey of the township (Mika and Mika 1981:34). John Green arrived in 1797 and built a grist mill. Other settlers followed, including the Morden family, who were Loyalists. The population of West Flamboro was only 360 in 1817, but jumped to 2,428 in 1849 (Walker and Miles 1878).

Development of Lot 11, Concession 2, West Flamboro Township, Wentworth County

According to the Abstract Index to Deed Titles, the Crown Patent for Lot 11 was granted to Lt. Allan McNab in 1796. The patent was for all 200 acres (80.9 ha). Later that year, McNab sold the lot to



merchant William Dickson, who in turn sold the entire lot to George Morden in 1804. Morden sold the south half (100 acres or 40.5 ha) or the more directionally correct 'west half', to David Morden in 1811, and sold the north half (100 acres or 40.5 ha) or the east half, to Richard Hatt in 1816. It is not clear how or when Mary and William Coulson acquired title to property on Lot 11, but in 1840 they sold five acres (2 ha) to James Hamilton. It is possible that Mary's maiden name was Morden. James Hamilton in turn sold this part to John McIroy, Morris Lutz, and A. Anderson in 1843. Lutz and Anderson then sold the five acres (2 ha) to McIroy in 1844 (Anon. n.d. [a]).

William Coulson sold 65 acres (26.3 ha) to Richard Coulson in 1847 and 50 acres (20.2 ha) to John Coulson in 1851. John Colson sold 40 acres (16.2 ha) of the 50 acres to George and Robert Coulson in 1856. Robert Colson then sold these 40 acres (16.2 ha) to George Colson in 1859 and deeded the south 45 acres (18.2 ha) to Samuel Betzner in trust for Mary Coulson, the wife of H. Coulson (Anon. n.d. [a]).

In 1860, George Coulson sold one-eighth of an acre (0.3 ha) to the Trustees of School Section No. 5. In 1862, George Coulson sold part of the lot to Robert Coulson, and Robert Coulson sold the northwest 25 acres (10.1 ha) to Samuel Betzner. In 1869, Robert Coulson sold part of the lot to Priscilla Fillman. In 1876, Fillman sold part of the lot to Richard Surorus, who in turn sold a small part to School Section No. 5 in 1885.

One large extended family was enumerated for Lot 11 in the 1851 census. William Coulson was a 65 year old Canadian-born farmer who lived with his wife Mary. Also residing on the lot was 33 year old merchant Frances Coulson, his wife, and their three children. Also enumerated were 23 year old John Coulson, 20 year old George Coulson, 16 year old Robert Coulson, 19 year old Margaret Herrington, and 19 year old George Hewitt. The family farmed 120 acres (48.6 ha) of which 46 acres (18.6 ha) were used for crops, 14 acres (5.7 ha) for gardens, and 60 acres (24.3 ha) left wild. The crops included wheat, rye, oats, buckwheat, Indian corn, and potatoes, while the livestock included cows, horses, sheep, and pigs. The dwelling was described as a two storey frame home and two families occupied it (Anon. 1851). If it is assumed that between two and four acres (1.6 ha) per year could be cleared of forest and put into agricultural production, this process was started sometime in the early 1830s.

Two families, the Betzner's and Coulson's, were enumerated for Lot 11 in the 1861 census. George Coulson was listed as a 30 year old Upper Canadian born farmer who lived with his mother Mary and 20 year old Mary Adams. The family farmed 119 acres (48.1 ha), of which 100 (40.5 ha) were used for crops, five for pasture, five for orchard, and nine left wild. The crops consisted of wheat, barley, oats, buckwheat, potatoes, turnips, and carrots, while the livestock included cows, horses, sheep, and pigs. The family resided in a two storey frame dwelling (Anon. 1861).

As previously mentioned, the Coulson's sold a portion of their holding to Mrs. Fillman in 1869. However, from this point on, the Coulson's name no longer appears in the records for Lot 11. In 1871, the only names enumerated for the lot are Mrs. Priscilla Fillman and the Betzner family. Priscilla Fillman was a 42 year old Ontario born widow who lived with a child and a 28 year old farmer named Richard Surorus. The Fillman family farmed 96 acres (38.8 ha), of which 92 acres (37.2 ha) were improved. The crops included wheat, barley, oats, peas, potatoes, buckwheat, turnips, hay, and apples, while the livestock consisted of horses, cows, sheep, and pigs. The family owned a dwelling house (Anon. 1871).

The 1875 *Illustrated Historical Atlas of the County of Wentworth* depicts a road traversing Lot 11 from east to west in the southern half (Figure 2). Mrs. Fillman's name is illustrated on the southern side of the road however, it is also associated with a portion of the western half and in the northern portion as well. This suggests her primary residence may have been located within the southern portion of the lot, rather



than the northern portion where the subject property is situated. There are no structures illustrated within the subject property on the historical map.

The 1861 assessment rolls noted that Samuel Betzner, Richard Surorus with “Mrs. Philman”, Pat McCroughton, Joseph Webster and George Coulson all reside within Lot 11. Coulson was described as a 29 year old farmer, residing on 119 acres (48.2 ha) (Anon. n.d. [b]). The latter entry would be reference to the five acres (2 ha) sold to Joseph Webster in 1855.

A total of three families were recorded in the 1880 assessment; Betzner, Surorus and Webster. By 1899 only two families were recorded in the assessment; Betzner and Surorus (Anon. n.d. [c]).

To summarize, the entire lot was transferred through several hands in the late eighteenth century. In 1804, George Morden acquired all 200 acres (80.9 ha). It is not clear how or when the Coulsons acquired the title to property however, it is suspected that Mrs. Mary Coulson may have had the maiden name Morden and thus was given the property in trust. It is thought, however, they may have settled within the lot during the early 1830s due to the amount of cultivated land by 1851. Over the nineteenth century the lot was divided and sold to numerous people. The subject property is located within a portion of the lot owned by the Coulson family. This name stays in the records until 1869, at which time Mrs. Fillman buys the land. Her name continues in the records until the late nineteenth century however, it is suggested that she does not live within the portion of Lot 11 under survey but to the south of the road which transverses the lot

1.3 Archaeological Context

Details of the five sites that have been registered within a 1 km radius from the subject property as well as the physiographic nature of the subject property can be found in the Stage 1-2 report (ASI 2012). Table 1 summarizes the registered nearby sites.

Table 1: Archaeological Sites Registered Within 1 km of the Subject property

Borden No.	Site Name	Cultural Affiliation	Site Type	Researcher
AhGx-288	Marianne	Late Archaic	Campsite	MHCI*, 2004
AhGx-289	Elinor	Archaic	Campsite	MHCI, 2004
AhGx-393	Greenworld	Undetermined Pre-contact	Findspot	MHCI, 1996
AhGx-394	Unnamed	Undetermined Pre-contact	Campsite	MHCI, 1996
AhHa-176	Unnamed	Undetermined Pre-contact	Findspot	Fisher J. 1997

*Mayer Heritage Consultants Inc.

The four sites on the property were originally discovered in the spring and fall of 2012 by ASI during a Stage 2 pedestrian survey of the agricultural fields on Lot 11, Concession 2 (ASI 2012).

The Coulson site (AhGx-691) measured a total area of approximately 40m north-south by 55 m east-west and a total of 25 artifacts was collected from an observed 228 artifacts (ASI 2012). The diagnostic artifacts collected consisted mostly of refined white earthenware and pearlware suggesting an early-to-mid nineteenth century date (ASI 2012:14). AhGx-696 was identified within the limits of the Coulson site and consisted of a secondary knapping flake of Onondaga chert, three secondary knapping flakes of Lockport chert, one shatter fragment, one biface fragment, and one complete biface (ASI 2012:11). AhGx-693 was encountered in the north central portion of the subject property, just west of the Coulson site, and measured approximately 45 m north-south and 45 m east-west. The artifact assemblage consisted mostly of Onondaga chert artifacts: one secondary knapping flake, three pieces of shatter, one biface fragment, and one projectile point. Additionally one ground stone limestone adze and one

Lockport secondary knapping flake were recovered (ASI 2012:9). AhGx-694 was encountered to the south of the other four sites. One Onondaga biface fragment and one projectile point fragment were observed approximately three m apart, and were recovered (ASI 2012:10)

The Stage 2 report concluded that these four sites represent potential significant archaeological resources and recommended that they be subject to a Stage 3 archaeological assessment to define their nature and extent (ASI 2012:18-19).

The CSPs on the four sites were conducted between October 24 and October 25, 2013. The Stage 3 unit excavations at the Coulson site (AhGx-691) were conducted between October 25 and November 22, 2013. The unit excavations at AhGx-696 were also conducted between October 28 and November 22, 2013, as part of the larger assessment of the Coulson site. The unit excavations at AhGx-693 were conducted between October 30 and November 22, 2013. The unit excavations at AhGx-694 were conducted between November 4 and 27, 2013.

2.0 FIELD METHODS

The Stage 3 assessment was initiated on October 24, 2013 under the project management of Ms. Eva MacDonald and Mr. David Robertson. All fieldwork was done in accordance with the 2011 *Standards and Guidelines for Consultant Archaeologists* (MTCS 2011). During all periods of excavation, weather and lighting conditions permitted good visibility and were in accordance with the archaeological fieldwork standards and guidelines (MTC 2011). Photographs of all field conditions were taken (Plates 1-2, and 5-7) and the location and direction of each photo is mapped in Figure 4.

The agricultural field was ploughed on October 16, 2013 and allowed to weather until the field conditions were excellent with a minimum of 80 percent surface visibility. The four sites were relocated on October 24, 2013 using mapping and GPS coordinates generated during the Stage 2 assessment and, once CSPs were completed for each site, a single recording grid was laid out with an optical transit across all four sites, with a separate datum placed at the center of each site due to their overlapping nature (ASI 2012).

2.1 The Coulson Site (AhGx-691)

Fieldwork at the Coulson site (AhGx-691) was conducted under the project direction of Ms. Kiara Beaulieu (MTCS PIF# P375-0015-2013) and field direction of Ms. Kiara Beaulieu (P375) between October 24 and November 1, 2013 and Mr. Wesley Oldham (R292) between November 4 and 22, 2013.

A pedestrian survey was conducted at a transect interval of one metre (Plate 1). Artifact stations were flagged and a fixed datum site was established within the recording grid at the center of the cluster, 500N-200E. The locations of all flagged artifacts were recorded relative to this fixed site datum using a total station. This resulted in the collection of 168 Euro-Canadian artifacts from an area approximately 60 m north-south by 95 m east-west (Figure 5).

A series of one metre square test units was excavated to determine the nature and extent of cultural deposits in the ploughzone within the site area. A total of 67 units were excavated across a 10 m grid defined by Stage 2 and CSP results. Thirty-one units were placed at 10 m intervals and an additional 36 test units (120%) were excavated in areas with relatively high artifact yields. Each unit was excavated stratigraphically at least five cm into sterile subsoil. The soil was screened through a six mm wire mesh in order to maximize the recovery of artifacts (Plate 2). The subsoil was trowelled and all profiles



examined for undisturbed cultural deposits (Plates 3-4). The unit depths varied from 28 cm in a total of 12 units around 500N-190E to 42 cm in unit 490N-230E. All test units were backfilled at the conclusion of excavation.

2.2 AhGx-693

Fieldwork at AhGx-693 was conducted under the project direction of Ms. Kiara Beaulieu (MTCS PIF# P375-0014-2013) and field direction of Ms. Kiara Beaulieu (P375) between October 24 and 25, 2013 and Mr. Wesley Oldham (R292) between November 4 and 27, 2013.

A pedestrian survey was conducted at a transect interval of one metre (Plate 5). Artifact stations were flagged and the locations were recorded relative to the fixed site datum, 510N-165E using a total station. This resulted in the collection of 30 pre-contact artifacts from an area approximately 65 m north-south by 50 m east-west (Figure 6).

The following MTCS standards for test unit strategy (MTCS 2011; Table 3.1) were applied: 30 test units were excavated across a 10 m grid overlaying the site area and an additional 12 test units (40 percent) were excavated in areas of higher artifact concentrations. The site limits were established when the artifact yields in test units were less than three and the entire area defined by the artifact distribution recorded during Stage 2 survey was assessed.

All test units were hand-excavated at least five cm into sterile subsoil or until a potential cultural feature was encountered. Soil fills were screened through six mm wire mesh to facilitate artifact recovery. The subsoil was trowelled, and all profiles were examined for undisturbed cultural deposits. The unit depths varied from 26 cm in units 520N-160E and 520N-1703 to 34 cm in unit 505N-165E. All test units were backfilled at the conclusion of excavation

2.3 AhGx-694

Fieldwork at AhGx-694 was conducted under the project direction of Ms. Kiara Beaulieu (MTCS PIF# P375-0016-2013) and field direction of Ms. Kiara Beaulieu (P375) between October 24 and November 1, 2013 and Mr. Wesley Oldham (R292) between November 5 and 22, 2013.

A pedestrian survey was conducted at a transect interval of one metre (Plate 6). Artifact stations were flagged and the locations were recorded relative to the fixed site datum, 460N-175E using a total station. This resulted in the collection of one projectile point. The grid was extended to encompass an area approximately 15 m north-south by 15 m east-west so that previous findspots could be incorporated into the assessment (Figure 7).

The following MTCS standards for test unit strategy (MTCS 2011; Table 3.1) were applied: 13 test units were excavated across a five metre grid overlaying the site area and an additional three test units (approx. 21 percent) were excavated over top previous findspots and at the location of the projectile point found during the CSP. Fifteen of the 16 units yielded zero artifacts and so no further units were excavated.

All test units were hand-excavated at least five cm into sterile subsoil or until a potential cultural feature was encountered. Soil fills were screened through six mm wire mesh to facilitate artifact recovery. The subsoil was trowelled, and all profiles were examined for undisturbed cultural deposits. The unit depths



varied from 25 cm in 464N-174E to 29 cm in unit 454N-169E. All test units were backfilled at the conclusion of excavation.

2.4 AhGx-696

Fieldwork at AhGx-696 was conducted under the project direction of Ms. Kiara Beaulieu (MTCS PIF# P375-0017-2013) and field direction of Ms. Kiara Beaulieu (P375) between October 25 and November 1, 2013 and Mr. Wesley Oldham (R292) between November 5 and 11, 2013. As stated in Section 1.3, the pre-contact site AhGx-696 was located within the larger Coulson site (AhGx-691).

A pedestrian survey was conducted at a transect interval of one metre, as this site was initially identified by Stage 2 pedestrian survey. Artifact stations were flagged and the locations were recorded relative to the fixed site datum, 500N-200E, using a total station (Plate 7). This resulted in the collection of seven pre-contact artifacts from an area approximately 15 m north-south by 15 m east-west (Figure 8).

The following MTC standards for test unit strategy (MTC 2011; Table 3.1) were applied: 28 test units were excavated across a five metre grid overlaying the site area and an additional eight test units (approx. 28.5 percent) were excavated in areas of higher artifact concentrations. The site limits were established when the artifact yields in test units were less than three and the entire area defined by the artifact distribution recorded during Stage 2 survey was assessed.

All test units were hand-excavated at least five cm into sterile subsoil or until a potential cultural feature was encountered. Soil fills were screened through six mm wire mesh to facilitate artifact recovery. The subsoil was trowelled, and all profiles were examined for undisturbed cultural deposits. The unit depths varied from 26 cm in units 515N-215E and 520N-210E to 35 cm in a total of four units around 505N-207E. All test units were backfilled at the conclusion of excavation.

3.0 RECORD OF FINDS

3.1 The Coulson site (AhGx-691)

3.1.1 Potential Features

The subsoil was trowelled and all profiles were examined for undisturbed cultural deposits. None were encountered within any of the 67 units excavated.

3.1.2 Artifact Distribution

At the Coulson site (AhGx-691), artifact yields ranged from one artifact in a total of five units along the west edge of the site [REDACTED] to 119 artifacts in unit 505N-207E. A discernible increase in the artifact yield counts can be seen at the center of the unit layout, with counts tapering off sharply to the north, south, and east, and gradually to the west (likely due to plow activity). Unit excavation was halted as artifact yields dropped below 15.

3.1.3 Artifact Inventory

The artifacts related to this archaeological assessment will be curated by Archaeological Services Inc. until such a time that arrangements for their ultimate transfer to Her Majesty the Queen in right of Ontario, or other public institution, can be made to the satisfaction of the project owner(s), the Ontario Ministry of Tourism, Culture, and Sport, and any other legitimate interest groups. The manner in which the material from AhGx-691 is stored is summarized in Table 2.

Table 2: The Coulson site (AhGx-691) Artifact Storage Information

ASI Project Code: 12TE-39			Two Boxes
Operation	Catalogue Numbers	Material	Box number
CSP	50 – 73	Ceramic	1
Test Unit Excavation	75 – 742	Ceramics	1
CSP	745 – 750	Glass	1
Test Unit Excavation	755 – 960	Glass	1
Test Unit Excavation	965 – 1000	Miscellaneous	1
Test Unit Excavation	1005 – 1180	Faunal	1
CSP	1185	Metal	2
Test Unit Excavation	1190 – 1390	Metal	2

The material from each unique one-metre square (or the controlled surface collection) is contained in a medium plastic zip lock bag; the bags are arranged sequentially by catalogue number, provenience, and material class in a standard-size bankers box.

In total, 2,007 Euro-Canadian historic artifacts (Appendix A) were recovered during the Stage 3 archaeological assessment of the Coulson site (AhGx-691). The “Classification System for Historical Collections” (Canadian Parks Service 1992) was used to organize the historical artifacts. The category of “Organic” was added to account for floral and faunal remains commonly found on historical sites. The artifacts were divided into the following six artifact classes: kitchen/food (n=1,567), organic (n=243), architectural (n=125), personal artifacts (n=11), tools/equipment (n=10) and items of indeterminate function (n=51) (Table 3). Detailed artifacts catalogues are located in Appendix A-1 (ceramic) and Appendix A-2 (non-ceramic).

Table 3: Artifacts from the Coulson site (AhGx-691) by Functional Class and Provenience

Artifact Class	CSP	Unit excavations	Class Totals	Class Total as % of Site	
<i>Architectural</i>		10	115	125	6.2%
Nail, machine cut	0		26		
Wire nail	0		2		
Indeterminate nail	0		35		
Window glass	10		52		
<i>Furnishings</i>		0	0	0	0%
<i>Personal</i>		0	11	11	0.5%
Personal Gear	0		11		
<i>Tools and Equipment</i>		0	10	10	0.5%
Agricultural	0		1		
Animal husbandry	0		1		
Hardware	0		6		
Musical	0		1		
Recreation	0		1		
<i>Organic</i>		0	243	243	12.1%
Amphibian	0		7		



Table 3: Artifacts from the Coulson site (AhGx-691) by Functional Class and Provenience

Artifact Class	CSP	Unit excavations	Class Totals	Class Total as % of Site
Avian	0	115		
Mammal	0	121		
<i>Kitchen/Food-related</i>	148	1,419	1,567	78.1%
Kitchenware	20	240		
Tableware	126	1,158		
Teaware	0	17		
Container, liquor	1	3		
Utensils	1	0		
Cup/tumbler	0	1		
<i>Indeterminate</i>	10	41	51	2.5%
Container	10	27		
Miscellaneous unidentified	0	14		
<i>Historical Artifact Totals</i>	168	1,839	2,007	100

3.1.3.1 Architectural Class

Artifacts in the architecture class comprise 6.2 percent (n=125) of the total assemblage recovered from the Coulson site (AhGx-691). In this assemblage there are 26 machine cut nails that date to between 1830 and 1900, two wire nails that post-date 1900, and 35 nails that are indeterminate (Table 3, Appendix A-2, Wells 2000). The nails date the Coulson site to the second half of the nineteenth century. Window glass fragments (n=62) were also recovered from across the site.

3.1.3.4 Kitchen/Food-related Class

The vast majority of artifacts recovered from Coulson site (AhGx-691) are kitchen and food-related, totalling 1,567, approximately 78 percent of the total artifact assemblage (Table 3, Appendix A). These artifacts relate to the storage, preparation, distribution, and consumption of food and beverages.

Ceramics

Ceramics are a useful tool for dating archaeological sites because of the historical progression of types in industrial-era ceramic production. Much of the innovation that took place in the eighteenth-century English ceramic industry resulted from the competition with the imported porcelain market from continental Europe and China (Kaellgren 2009:13). For instance, pearlware, an early nineteenth-century ceramic type, imitated Chinese porcelain by adding a small amount of cobalt oxide added to its glaze to create a slightly bluish tint (Miller and Hunter 2001). It was first developed in the 1770s and grew slowly in popularity because it was better suited for cobalt blue decorations than the earlier creamware ceramic type (Miller and Hunter 2001; Majewski and O'Brien 1987:118). Pearlware started to outnumber creamware by the early 1800s and continued to be sold in Ontario until the mid-1830s, when both were replaced with refined white earthenware (Kenyon 1995).

In competition with the local English bone china market, refined white earthenware was slowly developed from pearlware by reducing cobalt from the glaze and adding it to the body and thus effectively making the ceramic white in colour (Majewski and O'Brien 1987:119). It grew in popularity due to the fact that many different underglaze colours looked better on a white-bodied ceramic than they did on the light-blue



pearlware (Collard 1984:114). Thus, almost always decorated, refined white earthenware quickly became the most popular ceramic of the mid-nineteenth century (Majewski and O'Brien 1987:120).

Ironstone, or white granite as it was also known, started being produced in England in the 1840s as a heavier, cheaper alternative to the influx of hard paste porcelains from France into the markets of Canada and the United States (Majewski and O'Brien 1987:120). Due to its very hard durable body it became ubiquitous in frontier households. It started appearing in Ontario merchants' records in 1847 and grew in popularity steadily during the late nineteenth century, peaking in the 1880s (Kenyon 1995:10). While ironstone was the dominant ceramic in the second half of the nineteenth century, both it and refined white earthenware were still produced into the early twentieth century (Majewski and O'Brien 1987). The advances in ceramic manufacture in the early twentieth century also led to the development of high-temperature fired, vitrified earthenware.

Another mid to late nineteenth-century ceramic type was yellow ware. Yellow ware was primarily produced by American manufacturers in the northern states due to the predominance of buff coloured clay and the influx of English potters into North America (Gallo 1985:17). Yellow ware started appearing in merchant records in Ontario around the same time as ironstone in the early 1840s and was used primarily as kitchenware (Kenyon 1995). Some variants of it are still used today though its production tapered off in the United States by the 1930s (Leibowitz 1985:9).

Less chronologically diagnostic ceramics consist of stoneware, coarse red and buff earthenwares. Red and buff earthenwares are heavy, thickly potted ceramic types that receive their names from the colour of the clay after firing – red and buff respectively. As they are porous, they had to be glazed to make them food safe. Usually coarse earthenware pots were produced at local potteries in contrast to the refined ceramic types that were imported. The local Ontario manufacture of coarse earthenwares began as early as the late 1820s when German-speaking potters immigrated into the areas of Waterloo County and the Niagara Peninsula (Newlands 1979:22).

The Kitchen/Food-related ceramic assemblage from the Coulson site (AhGx-691) contains 1,560 sherds (Appendix A-1). The earliest ceramic ware type present is pearlware (n=1 or 0.1 percent of the ceramics) (Plate 8). The availability in Ontario ranges from the 1780s to approximately 1835.

Refined white earthenware is the most prevalent refined ceramic type, comprising 73.2 percent (n=1,142) of the ceramics assemblage. Manufactured after the 1820s, RWE would have been available in Ontario from the 1830s onwards. Yellowware, another mid-century ware type is also present (n=51 or 3.3 percent). Later nineteenth-century ironstone was also identified (n=85 or 5.4 percent).

Finally there are 97 sherds that are unidentifiable as to ware type as they are too thermally altered or too exfoliated (Appendix A-1)

As ceramic ware types changed through time, so did ceramic decorative styles. And as these were much quicker to change (based on the popular style of the day), the types of decorative treatments present in a ceramic assemblage offer a finer focus when assessing occupation dates of an archaeological site. A summary of these styles, as well as the date range for their availability, is presented in Table 4. Examples of selected styles can be seen in Plates 9-10. Based on this table and the percentage of wares discussed above, the assemblage dates from the middle to late nineteenth century.



Table 4: Refined Ceramic Decorative Styles and Approximate Date Ranges in Ontario

Style	Date Range	No. sherds	% of ceramics
Edgware, general	1780s-1870s	9	0.6%
Edgware, evenly scalloped	1800-1835	6	0.4%
Hand-painted, monochromatic blue	1800s-1830s	22	1.4%
Factory slipped	1800-1900	30	2%
Transfer print, chinoiserie	1816-1836	1	0.1%
Edgware, embossed	1820-1830	2	0.1%
Transfer, blue	1820s-present	76	4.9%
Transfer, black	1830-1840s	1	0.1%
Transfer, Willow pattern	1830s-present	16	1%
Hand-painted, late palette	1830s-1870s	59	3.8%
Edgware, straight edged, moulded	1840-1860	1	0.1%
Sponged	1840s-1870s	190	12.2%
Moulded, Wheat pattern	1860s-1900s	1	0.1%
Jet Ware	1860s-1900s	4	0.3%
Edgware, straight edged, unmoulded	1865-1895	13	0.8%

In summary, the date ranges for the ceramic assemblage reflects a broad occupation date of the middle to late nineteenth century, with the majority of the ceramics reflective of styles popular between the 1830s and the 1870s.

Less chronologically diagnostic ceramics consists of buff earthenware (n=1 or 0.1 percent), coarse red earthenware (n=179 or 11.5 percent), and refined red earthenware (n=4 or 0.3 percent). Unfortunately, coarse red and buff earthenware are difficult to date due to the relative stability of their overall morphological characteristics and the limited amount of published research on the topic. The local Ontario manufacturing of redware began as early as the late 1820s as German-speaking potters immigrated into the areas of Waterloo County and the Niagara Peninsula (Newlands 1979:22).

Turning to a discussion of vessels, the ceramic sherds have been sorted into a minimum number of vessels based on diagnostic rims, ware type, and distinctive decorative attributes. Six ceramic vessels could be identified, all teawares. These are listed in Table 5 and shown in Plate 11.

Table 5: Unique Teaware in the Coulson (AhGx-691) Assemblage

Cat. #	Provenience	Ware type	Description
510	505N-210E	RWE	Saucer, blue sponge decoration on upper surface,
416	505N-200E	RWE	Saucer, undecorated rim portion
480	505N-207E	RWE	Saucer, undecorated rim portion
395	503N-205E	RWE	Teacup, hand painted late palette pink annular band on interior and exterior surfaces at rim
423	505N-200E	RWE	Teacup, blue sponge decoration on exterior surface, interior surface has blue hand-painted annular band just below the rim
643	510N-210E	RWE	Teacup, blue sponge decoration on exterior body with hand-painted annular band at rim

Overall vessel use divides the ceramic kitchen/food related assemblage as follows: 260 sherds are kitchenware (16.7 percent), 1,283 sherds are tableware (82.2 percent), and 17 sherds are teaware (1.1 percent)



Non-Ceramics

The non-ceramic Kitchen/Food related class from the Coulson site (AhGx-691) is comprised of four glass liquor bottle fragments, one milk glass teacup fragment, one tumbler fragment, and one silver plated table spoon (Table 3, Plates 12-14, Appendix A-2). The table spoon handle is decorated with stamped filigree work and has a stamped mark on the underside of the handle that reads “SILVER PLATE” (Plates 13 and 14). Electroplating is the technique of covering a base metal with a coating of silver through electrolysis and was invented in England circa 1840 (Kenyon 1983:4).

3.1.3.5 Organic Class

There are 243 artifacts in the organic class from the Stage 3 archaeological assessment of the Coulson site (AhGx-691). They consist of seven amphibian bones, 115 avian bones, and 121 mammal bones. In total they represent 12.1 percent of the total assemblage from the site (Table 3, Appendix A-2). Evidence for thermal alteration was present on nine mammal bones, and three mammalian bones had butchery marks. All seven amphibian bones were found in unit 490N-205E and represent an in situ death.

3.1.3.6 Personal Class

The personal class contains only 11 artifacts, all fragments from smoking pipes (Table 3, Appendix A-2). Of the five bowl fragments: two are decorated with moulded ribbing, one is decorated with an unidentifiable moulded motif, and two are undecorated (Plate 15). All of the stem fragments are undecorated (n=4).

3.1.3.7 Tools/Equipment Class

In total there are nine artifacts associated with the tools and equipment class from the Coulson site (AhGx-691) comprising 0.5 percent of the total assemblage. They consist of one piece of barbed wire, two bolt fragments, one plastic gaming piece (black checkers piece), one horse shoe nail fragment, one mouth harp, one spike fragment, and two wire fragments (Appendix A-2).

A mouth harp is a simple instrument that is held in the mouth and played by plucking the striking point while changing the shape of one's mouth to alter the sound of a single note (Plate 16) (Kenyon 1984:4).

3.1.3.8 Indeterminate Class

Of the total assemblage of artifacts recovered from the Coulson site (AhGx-691), 2.5 percent are unidentifiable (n=51) (Table 3, Appendix A-2). These consist of 37 unidentified containers (all glass) and 14 other unidentifiable items (mostly corroded metal, but also including one fragment of parian ware ceramic, and one item of unidentifiable material). These could not be assigned to a functional class.



3.2 AhGx-693

3.2.1 Potential Features

The subsoil was trowelled and all profiles were examined for undisturbed cultural deposits. None were encountered within any of the 42 units excavated.

3.2.2 Artifact Distribution

At AhGx-693, the yields of lithic artifacts were generally low (under 10 pieces) and ranged from one artifact in a total of 13 units spread across the site [REDACTED]

[REDACTED] yielded an artifact count of 10 or higher and are located in the approximate centre of the surface scatter. Unit excavation was halted as artifact yields became one or zero, though limits of three were accepted, as defining the maximum extent of the site.

3.2.3 Artifact Inventory

The artifacts related to this archaeological assessment will be curated by Archaeological Services Inc. until such a time that arrangements for their ultimate transfer to Her Majesty the Queen in right of Ontario, or other public institution, can be made to the satisfaction of the project owner(s), the Ontario Ministry of Tourism, Culture, and Sport, and any other legitimate interest groups. The manner in which the material from AhGx -693 is stored is summarized in Table 6.

Table 6: AhGx-693 Artifact Storage Information

Operation	Catalogue Numbers	Material	One Plastic Bag
ASI Project Code: 12TE-39			
CSP	L11-40	Lithics	
Test Unit Excavation	L41-115	Lithics	

The material from each unique one-metre square (or the controlled surface collection) is contained in a medium plastic zip lock bag; the bags are arranged sequentially in a large plastic zip lock bag.

The lithic artifacts (Table 7) consist predominantly of debitage (n=134) with a few formal tools (n=3), totalling 137 artifacts (Table 7). The debitage consists of three secondary retouch flakes (2.2 percent), 45 secondary knapping flakes (32.8 percent), 71 flake fragments (51.8 percent), two primary thinning flakes (1.5 percent), one core trimming flake (0.7 percent), and 12 pieces of shatter (8.8 percent). Examples of these can be seen in Plate 17. “Expedient” tool use, in the form of retouch and/or utilization on one or more edges, is evident on 12 debitage specimens; four secondary knapping flakes, five flake fragments, two primary thinning flakes, and one piece of shatter (Appendix B).

Three formal tools (2.2 percent) were identified: a fragmentary base and partial blade of a projectile point and two bifaces. The fragmentary point is broken at its tip but the blade is thin and side-notched with a straight base. It is likely a Meadowood point dating to the Early Woodland period (800 – 400 B.C.). Both bifaces (L18, L37; Plate 18) are complete specimens, manufactured from Bois Blanc chert and represent middle and late stages of refinement, respectively.

Table 7: Lithic Artifacts Recovered During the Stage 3 at AhGx-693

Type	Total (Percent)	Thermally-Altered (Percent)	Retouched (Percent)	Onondaga (Percent)	Lockport (Percent)	Bois Blanc (Percent)	Kettle point (Percent)
Secondary retouch flake	3 (2.2%)			1 (2.3%)	1 (3.1%)	1 (3.6%)	
Secondary knapping flake	45 (32.8%)		4 (33.3%)	15 (34.9%)	16 (43.2%)	14 (50%)	
Flake fragment	71 (51.8%)	3 (75%)	5 (42%)	38 (62.3%)	23 (53.5%)	10 (31.3%)	
Primary thinning flake	2 (1.5%)		2 (16.6%)	1 (2.3%)		1 (3.6%)	
Core trimming flake	1 (0.7%)			1 (2.3%)			
Biface/fragment	2 (1.5%)					2 (7.2%)	
Shatter	12 (8.8%)	1 (25%)	1 (8.3%)	4 (9.3%)	3 (8.1%)	4 (14.3%)	1 (100%)
Projectile point/ fragment	1 (0.7%)			1 (2.3%)			
Total (Percent of Total)	137 (100%)	4 (3%)	12 (8.8%)	61 (44.5%)	43 (31.4%)	32 (20.4%)	1 (1.7%)



Evidence of thermal alteration, in the form of “pot-lids” and textural changes, such as “crinkling,” is present on a minority of artifacts - four specimens (3 percent): three flake fragments and one piece of shatter (Appendix B).

The raw material used at the site consists of approximately comparable quantities of Onondaga chert (n=61 or 45 percent) versus Lockport (n=43) and Bois Blanc (n=32), which comprises 54 percent of the collection. Kettle Point chert is present in the form of a single piece of debitage.

3.3 AhGx-694

3.3.1 Potential Features

The subsoil was trowelled and all profiles were examined for undisturbed cultural deposits. None were encountered within any of the 16 units excavated.

3.3.2 Artifact Distribution

At AhGx-694 artifact yields were sparse. Only one unit contained a single lithic flake [REDACTED]. The remaining 15 units yielded no artifacts.

3.3.3 Artifact Inventory

The artifacts related to this archaeological assessment will be curated by Archaeological Services Inc. until such a time that arrangements for their ultimate transfer to Her Majesty the Queen in right of Ontario, or other public institution, can be made to the satisfaction of the project owner(s), the Ontario Ministry of Tourism, Culture, and Sport, and any other legitimate interest groups. The manner in which the material from AhGx -694 is stored is summarized in Table 8.

Table 8: AhGx-694 Artifact Storage Information

Operation	Catalogue Numbers	Material
CSP	L5	Lithics
Test Unit Excavation	L6	Lithics

The material from each unique one-metre square (or the controlled surface collection) is contained in a medium plastic zip lock bag; the bags are arranged sequentially in a large plastic zip lock bag.

Two lithic artifacts were recovered from this site. The surface material consists of a single complete Middle Woodland Snyders projectile point made of Onondaga material (ca. 400 B.C. to A.D. 500). The unit excavations yielded one additional lithic artifact, a secondary retouch flake made of Kettle Point chert (Appendix C). Both are pictured in Plate 19. Unit excavation was halted when it became apparent that there are no significant ploughzone deposits within the site area.

3.4 AhGx-696

3.4.1 Potential Features

The subsoil was trowelled and all profiles were examined for undisturbed cultural deposits. None were encountered within any of the 36 units excavated.

3.4.2 Artifact Distribution

At AhGx-696, artifact yields ranged from one artifact in a total of 12 units spread across the site [REDACTED] to 19 artifacts in unit [REDACTED], located in the approximate centre of the distribution. One unit contained no artifacts at all. Only unit [REDACTED] yielded an artifact count of 10 or higher. Formal tools/tool fragments were recovered from units [REDACTED]. Unit excavation was halted as artifact yields became one or zero, though limits of three were accepted, in defining the maximum extent of the site.

3.4.3 Artifact Inventory

In total, 121 lithic artifacts were recovered during the Stage 3 archaeological assessment of AhGx-696. The artifacts related to this archaeological assessment will be curated by Archaeological Services Inc. until such a time that arrangements for their ultimate transfer to Her Majesty the Queen in right of Ontario, or other public institution, can be made to the satisfaction of the project owner(s), the Ontario Ministry of Tourism, Culture, and Sport, and any other legitimate interest groups. The manner in which the material from AhGx -696 is stored is summarized in Table 9.

Table 9: AhGx-696 Artifact Storage Information

Operation	Catalogue Numbers	Material	
ASI Project Code: 12TE-39			One Plastic Bag
CSP	L10-L16	Lithics	
Test Unit Excavation	L17-L90	Lithics	

The material from each unique one-metre square (or the controlled surface collection) is contained in a medium plastic zip lock bag; the bags are arranged sequentially in a large plastic zip lock bag.

A total of 121 flaked lithic artifacts were recovered during the Stage 3 assessment (Table 10), including seven pieces from the surface and 114 from the excavation of 36 one metre units that yielded lithic artifacts (Figure 8). The assemblage consists predominantly of debitage (n=116), specifically 11 secondary retouch flakes (9.1 percent), 35 secondary knapping flakes (30 percent), 65 distal flake fragments (53.7 percent), four pieces of shatter (3.3 percent), and a single miscellaneous chunk or cobble (0.8 percent) (Table 10, Plate 20). “Expedient” tool use, in the form of retouch and/or utilization on one or more edges, is evident on only two debitage specimens: a secondary knapping flake (L24) and a flake fragment (L17) (Appendix D).

A tip fragment of a probable projectile point (L35) of Onondaga chert, a rectangular- shaped Lockport chert biface fragment, representing an early stage of refinement (L62) and three scrapers were recovered. The scrapers were manufactured from Onondaga, Lockport, and Bois Blanc chert. All are unifacially

Table 10: Lithic Artifacts Recovered During the Stage 3 at AhGx-696

Type	Total (Percent)	Thermally-Altered (Percent)	Retouched (Percent)	Onondaga (Percent)	Lockport (Percent)	Bois Blanc (Percent)	Haldimand (Percent)
Secondary retouch flake	11 (9.1%)			5 (16.7%)	5 (6.7%)	1 (9.1%)	
Secondary knapping flake	35 (30%)		1 (33.3%)	8 (26.7%)	24 (32%)	3 (27.3%)	
Flake fragment	65 (53.7%)	4 (80%)	1 (33.3%)	14 (46.7%)	44 (58.7%)	6 (54.5%)	1 (100%)
Shatter	4 (3.3%)				4 (5.3%)		
Chunk/cobble	1 (0.8%)			1 (3.3%)			
Biface/fragment	1 (0.8%)				1 (1.3%)		
Scraper	2 (1.7%)	1 (20%)	1 (33.3%)	1 (3.3%)	1 (1.3%)		
End scraper	1 (0.8%)					1 (9.1%)	
Projectile point/fragment	1 (0.8%)			1 (3.3%)			
Total (Percent of Total)	121 (100.0%)	5 (4.1%)	3 (2.5%)	30 (24.8%)	79 (65.3%)	11 (9.1%)	1 (0.8%)



worked specimens made on flakes, with lateral retouch on multiple edges (L57, L84) or steep distal retouch, identifying it as an end scraper (L90) (Plate 21).

Evidence of thermal alteration, in the form of “pot-lids” and textural changes, such as “crinkling,” was present on five specimens (4.1 percent), four flake fragments and one scraper (Appendix D).

The raw material used at this site was predominantly Lockport chert, comprising 65.3 percent of the collection (n=79). Bois Blanc chert was used for 11 pieces (9.1 percent), Haldimand chert was used for one flake fragment (0.8 percent), and Onondaga was used for only a quarter of the collection numbering 30 pieces (24.8 percent). Materials used for the formal tools recovered varied; one scraper and the projectile point fragment were made using Onondaga material, the second scraper and the biface fragment were made using Lockport chert, and the end scraper was made of Bois Blanc chert.

3.5 Inventory of the Documentary Record

The material relating to the Stage 3 archaeological assessment of the Coulson site (AhGx-691) and AhGx-693, 694, and 696 is curated by ASI as part of the 2011 licensing agreements made with the Ministry of Tourism, Culture, and Sport. The details of this curated material are listed in Table 11.

Table 11: Material Curated by ASI from the Coulson site (AhGx-691) and AhGx-693, 694, and 696

Document/Material	Location	Comments
Written field notes, annotated field maps, GPS logs, one-metre excavation forms	Archaeological Services Inc., 528 Bathurst Street, Toronto, ON M5S 2P9	
Field Photography (Digital)	Archaeological Services Inc., 528 Bathurst Street, Toronto, ON M5S 2P9	Stored on ASI network servers and/or CD-ROM
Research/Analysis/Reporting Materials (Various Formats)	Archaeological Services Inc., 528 Bathurst Street, Toronto, ON M5S 2P9	Hard copy and/or digital files stored on ASI network servers and/or CD-ROM
Artifacts	Archaeological Services Inc., 528 Bathurst Street, Toronto, ON M5S 2P9	2,007 Euro-Canadian artifacts stored in two boxes from the Coulson site (AhGx-691). 137 pre-contact Aboriginal artifacts stored in one plastic bag from AhGx-693. Two pre-contact Aboriginal artifacts stored in one plastic bag from AhGx-694. 121 pre-contact Aboriginal artifacts stored in one plastic bag from AhGx-696. All material stored in standard banker’s boxes by class and provenience. Collection may be transferred to one of ASI’s secure, off-site storage facilities if deemed necessary.



4.0 ANALYSIS AND CONCLUSIONS

The Stage 3 archaeological assessment of the Coulson site (AhGx-691), AhGx-693, 694, and 696 was carried out to define the nature and extent of the cultural deposits prior to the development of the property.

The Stage 3 archaeological assessment of the Coulson site (AhGx-691) involved the controlled surface collection of 168 artifacts and the excavation of 67 one metre square units in a 60 m north-south by 95 m east-west area. In total 1,839 Euro-Canadian artifacts were recovered from the ploughzone. The assessment of the pre-contact site AhGx-696 was carried out concurrently with the Coulson site. Seven lithic artifacts were recovered from the surface while an additional 114 were recovered during the test unit excavation process. Additionally, the assessment of AhGx-693 involved a controlled surface collection of 30 lithic artifacts and the excavation of 42 one metre square units in a 65 m north-south by 50 m east-west area. In total, 137 pre-contact lithic artifacts were recovered. Finally, the assessment of AhGx-694 involved a controlled surface collection of one projectile point and the excavation of 16 one metre square units in a 15 m north-south by 15 m east-west area. In total, two pre-contact lithic artifacts were recovered.

According to the background research conducted for this project, the entire lot was transferred through several hands in the late eighteenth century until George Morden acquired all 200 acres (80.9 ha) of Lot 11, Concession 2 in 1804. It is suspected that Mrs. Mary Coulson may have had the maiden name Morden thus giving the property to the Coulson family in trust. It is thought that they settled within the lot during the early 1830s (based on the amount of land cultivated by 1851). Over the nineteenth century the lot was sub-divided and sold to numerous people though the subject property is located within the portion of the lot owned by the Coulson family. This name stays in the records until 1869, at which time Mrs. Fillman purchased the land.

Analysis of the Coulson site (AhGx-691) artifact assemblage and its distribution is consistent with continual occupation from the mid-to-late nineteenth century. An analysis of the ceramic assemblage supports this, with the majority of diagnostic decorative styles having been popular between the 1830s and 1870s. The absence of pearlware, save for one fragment, coupled with that high number of refined white earthenware sherds suggests the site was primarily occupied in the middle of the nineteenth century, and the presence of some ironstone extends this date into the late nineteenth century. Other artifacts that correspond to the mid-to-late nineteenth century timeframe include non-ceramic kitchen items (a silver plated spoon) and machine cut nails.

No possible cultural features were identified at the Coulson site (AhGx-691); however it is possible that significant subsurface nineteenth-century features are present beneath the ploughzone.

Given that the latest dates contained in the artifact assemblage for the Coulson site (AhGx-691) fall into the late nineteenth century, and that the lands were sold by the Coulson family in 1869, it can be said that most (80% or more) of the time span of occupation of the archaeological site dates to before 1870 and therefore represents a resource of cultural heritage value as per the requirements of the 2011 *Standards and Guidelines for Consultant Archaeologists* (MTCS 2011:Section 3.4.2, p. 59).

The single diagnostic artifact recovered from AhGx-693 indicates that the pre-contact occupation at this site occurred during the Early Woodland period (800-400 BC). The controlled surface collection recovered 30 lithics and artifact yields during unit excavation were generally low, ranging from zero to 14 lithics, over an area approximately 65 m north-south by 50 m east-west.. The predominance of primary



and secondary flakes suggests that some semi-refined or refined biface reduction and/or formal tool re-sharpening took place at this location.

With respect to the pre-contact site AhGx-694, one out of the two lithic artifacts recovered at the site is diagnostic, representing a very ephemeral, temporary pre-contact Middle Woodland Aboriginal occupation (ca. 400 B.C. to AD 500). These Stage 3 results do not indicate the site to be a resource of cultural heritage value. This evaluation of the significance or heritage value of the sites is consistent with the requirements of the 2011 *Standards and Guidelines for Consultant Archaeologists* (MTCS 2011:Section 3.4.1, p. 58), which, with respect to small or diffuse lithic scatters, note that sites which merit Stage 4 mitigation exhibit at least one of the following characteristics: one or more test units yielding ten or more artifacts; one or more test units yielding five to nine artifacts, including at least one diagnostic artifact; one or more ceramic sherds; or one or more subsurface cultural features. Site AhGx-694 meets none of these criteria.

Finally, at site AhGx-696, a controlled surface collection was undertaken and 36 one metre units were excavated over an area approximately 60 m north-south by a 95 m east-west, recovering a total of 121 flaked lithic artifacts. Artifact yields were low (under 10 pieces) with the exception of a single unit, which yielded 19 lithics. Though five formal tools were recovered, none were diagnostic.

In summary, the Stage 3 archaeological assessments on Part of Lot 11 resulted in the identification, documentation, and controlled excavation of 161 one-metre squares and the collection of 2,007 Euro-Canadian and 260 pre-contact aboriginal artifacts. Two of the three pre-contact sites, AhGx-693 and 696, as well as the historic Coulson site (AhGx-691) represent significant cultural heritage resources. The remaining site, AhGx-694, is a low density lithic scatter and does not warrant Stage 4 mitigation.

The current detailed design of the Johnson Tew Community Park and Aboretum, to be developed on Part of Lot 11, Concession 2, puts the nineteenth-century and pre-contact deposits within the development zone (ASI 2014: Figure 2). After careful consideration and consultation, the development plan was modified to avoid and protect the significant deposits of the Coulson site and Sites AhGx 693 and AhGx-696.

5.0 RECOMMENDATIONS

It is concluded, therefore that a comprehensive avoidance and protection strategy should be implemented for the Coulson site (AhGx-691), and AhGx-693, and AhGx-696:

1. AhGx-694 is not a resource of cultural heritage value or interest and may be considered clear of archaeological concern. No further archaeological assessment is required.
2. The short term avoidance strategy for the Coulson site (AhGx-691), AhGx-693, and 696 during the earth moving activities related to park landscaping must comply with the 2011 *Standards and Guidelines for Consultant Archaeologists*, Section 4.1.1. The following avoidance measures should be completed:
 - a high visibility temporary barrier (e.g. orange plastic snow fence, etc) must be erected encircling all three sites, including the 10 m buffer to denote the area to be avoided (Figure 9);



- avoidance instructions and mapping illustrating the “no go” areas around the site should be issued to all personnel during construction;
 - inspection and monitoring of the area by a licensed archaeologist must be conducted during soil-disturbing activities, and this person shall have the authority to halt soil disturbance activity in proximity to the site should they deem the site(s) to be at risk;
 - a Stage 4 Avoidance and Protection report must be completed and submitted to the MTCS after construction activities are completed, in accordance with the 2011 *Standards and Guidelines for Consultant Archaeologists*, Section 7.10.
3. In order for the long-term protection of the Coulson site (AhGx-691), AhGx-693, and 696 to be in accordance with the 2011 *Standards and Guidelines for Consultant Archaeologists*, the allowable uses for the protected area must not include any activities that might alter the archaeological site in any way, either temporarily or permanently (MTCS 2011: Section 4.1.4, pg 70). This includes even minor forms of soil disturbance such as tree removal, minor landscaping, utilities installation, etc.
4. Documentation supporting a recommendation for avoidance and protection must be provided, in accordance with the 2011 *Standards and Guidelines for Consultant Archaeologists*, Section 7.10:
- documentation confirming support of avoidance and protection including a letter from the approval authority and a copy of the draft or final formal long-term protection provision;
 - Documentation from the proponent confirming measures to ensure avoidance during construction;
 - a schedule for inspection and monitoring during and after construction;
 - a large-scale section of the development plan that clearly shows the following:
 - a. the location of the archaeological site recommended for protection;
 - b. the protective buffer around the site;
 - c. the limits of the area that will be long-term protected.

NOTWITHSTANDING the results and recommendations presented in this study, Archaeological Services Inc. notes that no archaeological assessment, no matter how thorough or carefully completed, can necessarily predict, account for, or identify every form of isolated or deeply buried archaeological deposit. In the event that archaeological remains are found during subsequent construction activities, the consultant archaeologist, approval authority, and the Cultural Programs Unit of the Ministry of Tourism, Culture, and Sport should be immediately notified.

The above recommendations are subject to Ministry approval and it is an offence to alter any archaeological site without Ministry of Tourism, Culture, and Sport (MTCS) concurrence. No grading or other activities that may result in the destruction or disturbance of any archaeological sites are permitted until notice of MTCS approval has been received.



6.0 ADVICE ON COMPLIANCE WITH LEGISLATION

The following advice on compliance is provided:

- This report is submitted to the Minister of Tourism, Culture, and Sport as a condition of licensing in accordance with Part VI of the Ontario Heritage Act, RSO 1990, c 0.18. The report is reviewed to ensure that it complies with the standards and guidelines that are issued by the Minister, and that the archaeological field work and report recommendations ensure the conservation, preservation and protection of the cultural heritage of Ontario. When all matters relating to archaeological sites within the project area of a development proposal have been addressed to the satisfaction of the Ministry of Tourism, Culture, and Sport a letter will be issued by the ministry stating that there are no further concerns with regard to alterations to archaeological sites by the proposed development.
- It is an offence under Sections 48 and 69 of the Ontario Heritage Act for any party other than a licensed archaeologist to make any alteration to a known archaeological site or to remove any artifact or other physical evidence of past human use or activity from the site, until such time as a licensed archaeologist has completed archaeological field work on the site, submitted a report to the Minister stating that the site has no further cultural heritage value or interest, and the report has been filed in the Ontario Public Register of Archaeology Reports referred to in Section 65.1 of the Ontario Heritage Act.
- Should previously undocumented archaeological resources be discovered, they may be a new archaeological site and therefore subject to Section 48 (1) of the Ontario Heritage Act. The proponent or person discovering the archaeological resources must cease alteration of the site immediately and engage a licensed consultant archaeologist to carry out archaeological fieldwork, in compliance with sec. 48 (1) of the Ontario Heritage Act.
- The Funeral, Burial and Cremation Services Act, 2002, S.O. 2002, c.33, requires that any person discovering or having knowledge of a burial site shall immediately notify the police or coroner. It is recommended that the Registrar of Cemeteries at the Ministry of Consumer Services is also immediately notified.
- Archaeological sites recommended for further archaeological field work or protection remain subject to Section 48(1) of the Ontario Heritage Act and may not be altered, nor may artifacts be removed from them, except by a person holding an archaeological license.



7.0 BIBLIOGRAPHY AND SOURCES

ASI (Archaeological Services Inc.)

- 2012 Stage 1 and 2 Archaeological Assessment of Johnson Tew Community Park & Aboretum, Project No.: OS2601.17.PG, (Professional consultant Services Roster, Reference Number C12-06-10), Part of Lot 11, Concession 2, Geographic Township of Flamboro West, Wentworth County, now the City of Hamilton. Original Report. PIF P347-116-2012, P047-325-2012. License report on file, Ontario Ministry of Tourism, Culture, And Sport, Toronto.
- 2014 Stage 3 Archaeological Assessment of AhGx-693, 694, 696, The Coulson Site (AhGx-691), Part of Lot 11, Concession 2, Geographic Township of Flamboro West, Wentworth County, now the City of Hamilton. Supplementary Documentation. MTCS PIF# P375-0014-2013, P375-0015-2013, P375-0014-2013, P375-0016-2013, and P375-0017-2013. Report on file, Ontario Ministry of Tourism, Culture, and Sport, Toronto.

Anonymous

- n.d. [a] Abstract Index to Deed Titles, West Flamboro Township, reel GSU 161238
- n.d. [b] Flamboro West Township, Assessment Rolls, Reel G.S. 148a, Archives of Ontario.
- n.d.[c] Flamboro West Township, Assessment Rolls, Reel G.S. 146b, Archives of Ontario.
- 1851 Flamboro West Township, Census Rolls, Microfilm Reel C-11758, Archives of Ontario.
- 1861 Flamboro West Township, Census Rolls, Microfilm Reel C-1086, Archives of Ontario.
- 1871 Flamboro West Township, Census Rolls, Microfilm Reel C-9925, Archives of Ontario.

Canadian Parks Service

- 1992 *Classification System for Historical Collections*. National Historic Sites, Parks Service, Environment Canada.

Collard, Elizabeth

- 1984 *Nineteenth-Century Pottery and Porcelain in Canada*. Second Edition. McGill-Queen's University Press, Montreal and Kingston.

Gallo, John

- 1985 *Nineteenth and Twentieth Century Yellow ware*. Heritage Press, Richfield Springs, New York.

Illustrated Historical Atlas of the County of Wentworth

- 1875 Walker & Miles, Toronto.

Kaellgren, Peter

- 2009 *Wedgewood, Artistry and Innovation*. Royal Ontario Museum, Toronto.

Kenyon, Thomas

- 1980 Some General Notes on 19th Century Ceramics. *KEWA: Newsletter of the London Chapter of the Ontario Archaeological Society* (3).



- 1981 The Metal Jew's Harp. *KEWA: Newsletter of the London Chapter of the Ontario Archaeological Society*, (4).
- 1983 Metal Spoons. *KEWA: Newsletter of the London Chapter of the Ontario Archaeological Society*, (4).
- 1995 A History of Ceramic Tableware in Ontario: 1780 – 1910. Paper presented at Table Talks Lecture Series, Montgomery's Inn, Toronto.
- Leibowitz, Joan
- 1985 *Yellow Ware; the Transitional Ceramic*. Schiffer Publishing, Ltd., Exton, Pennsylvania.
- Majewski, T. and M. J. O'Brien
- 1987 The Use and Misuse of Nineteenth-Century English and American Ceramics. In *Archaeological Analysis: Advances in Archaeological Method and Theory, Volume II*, edited by M. B. Schiffer, pp. 97 – 209. Academic Press, New York.
- Miller, George, and Robert Hunter Jr.
- 2001 How Creamware Got the Blues: The Origins of China Glaze and Pearlware. In *Ceramics in America, Volume 1*, edited by R. Hunter, pp. 135-161. The Chipstone Foundation, Madison, Wisconsin.
- (MTCS) Ministry of Tourism, Culture and Sport
- 2011 *Standards and Guidelines for Consulting Archaeologists*. Toronto: Cultural Programs Branch, Archaeology and Planning Unit.
- Newlands, David
- 1979 *Early Ontario Potters: Their Craft and Trade*. McGraw-Hill Ryerson, Toronto.
- Webster, Donald
- 1969 *Early Slip-Decorated Pottery in Canada*. Charles J. Musson, Toronto
- Wells, Tom
- 2000 Nail Chronology: The Use of Technologically-Derived Features. In *Approaches to Material Culture Research for Historical Archaeologists, Volume Two*, ed. by David R. Brauder, pp. 318-339



8.0 MAPS AND FIGURES

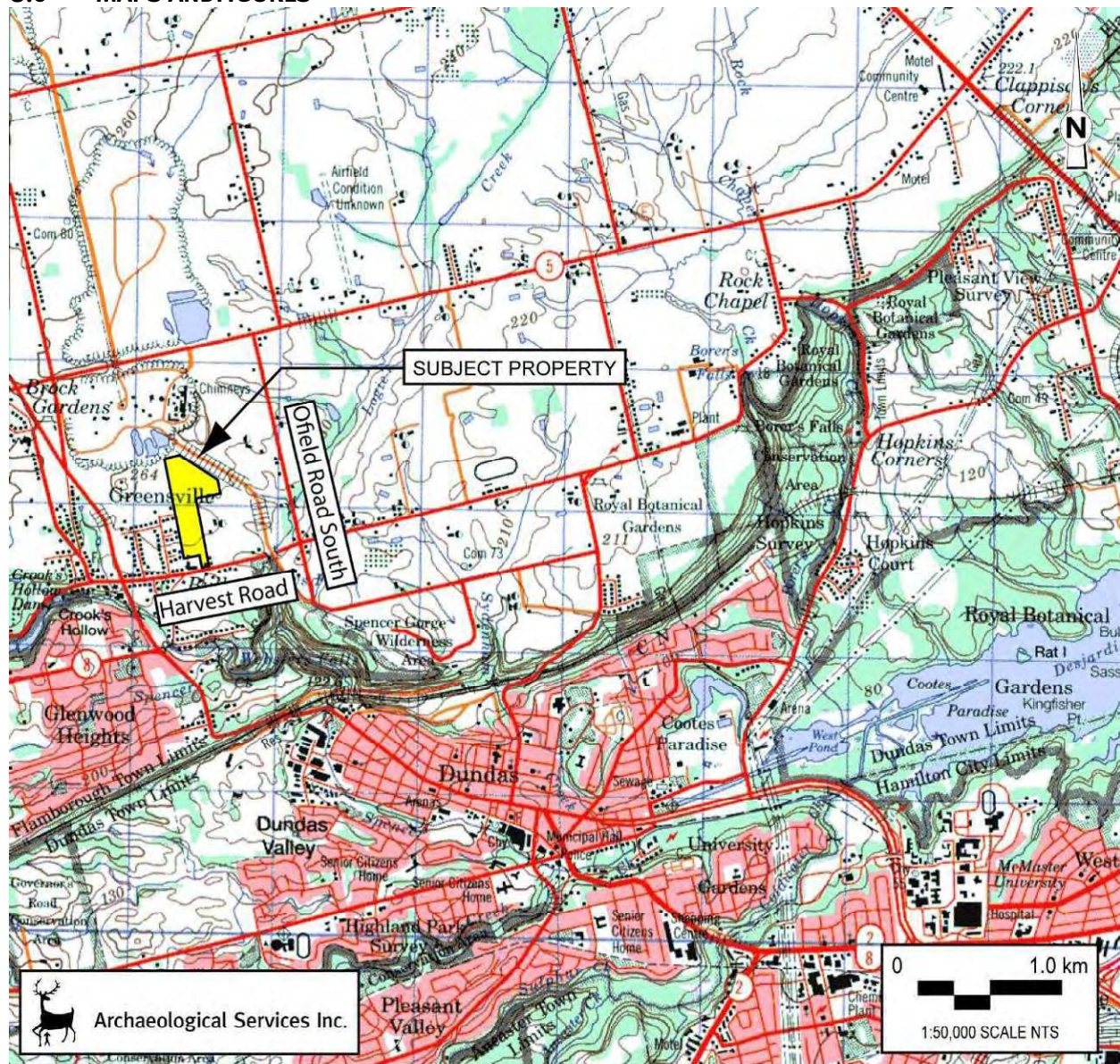


Figure 1: The subject property where the Coulson site (AhGx-691), AhGx-693, 694, and 696 are located
Base map NTS sheet 30 M/5 Hamilton-Burlington, 10th Edition, 1999.

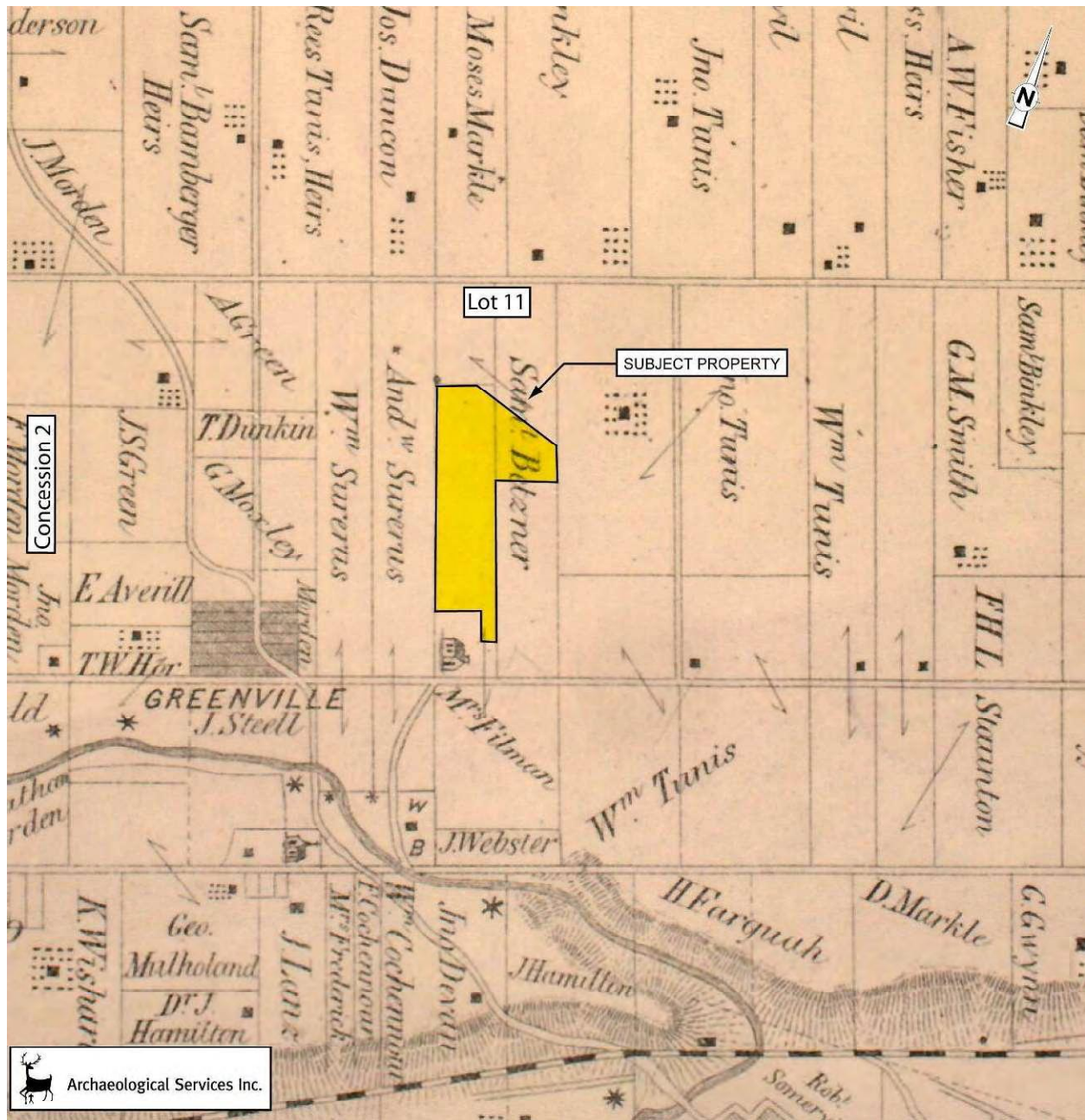


Figure 2: The subject property overlaid on the 1875 *Illustrated Historical Atlas of the County of Wentworth*.

9.0 IMAGES



Plate 1: CSP at the Coulson site (AhGx-691), looking north.



Plate 2: Stage 3 unit excavations at the Coulson site (AhGx-691), looking northeast.



Plate 3: North profile of unit 500N-230E showing excavation through ploughzone into subsoil



Plate 4: North profile of unit 520N-180E showing excavation through ploughzone into subsoil





Plate 5: CSP at AhGx-693, looking northwest.



Plate 6: CSP at AhGx-694, looking southwest.



Plate 7: CSP recording using the total station at AhGx-696, looking southeast.



Plate 8: Pearlware tableware decorated with straight edgware motif, unpainted (Cat. #140).



Plate 9: Assorted mid-nineteenth century ceramics recovered from the Coulson site. Top. Left, blue evenly scalloped refined white earthenware flatware (Cat. #396); centre, red evenly scalloped refined white earthenware flatware (Cat. #487); right, blue chicken claw edgeware flatware of indeterminate ware type (Cat. #61). Bottom. Left, hand-painted monochrome blue refined white earthenware hollowware (Cat. #514); right, black transfer printed refined white earthenware hollowware (Cat. #429).



Plate 10: Assorted late nineteenth century ceramics recovered from the Coulson site. Top. Left wheat pattern ironstone flatware (Cat. #110); centre, two factory slipped refined white earthenware hollowware sherds (Cat. #359 and #358); right, blue spongeware refined white earthenware hollowware (Cat. #511). Bottom. Left, blue transfer print refined white earthenware flatware (Cat. #495); left-centre, blue straight edgeware refined white earthenware flatware (Cat. #354); right, two examples of hand painted late palette refined white earthenware hollowware (Cat. #515 and #491).





Plate 11: Unique vessels identified from the Coulson site. Top. Left, undecorated thin refined white earthenware saucer (Cat. #416); centre, blue spongeware refined white earthenware saucer (Cat. #510); right, undecorated refined white earthenware saucer. Bottom, hand-painted late palette refined white earthenware teacup (Cat. #395), centre, blue spongeware refined white earthenware teacup (Cat. #423); right, blue spongeware refined white earthenware teacup with hand painted annular band at rim (Cat. #643).



Plate 12: Selected glass identified from the Coulson site. Left, white milkglass teacup (Cat. #856), right, bottom of colourless tumbler glass (Cat. #852).



Plate 13: Silver plated table spoon from the Coulson site (Cat. #1185)



Plate 14: Close-up of impressed mark "SILVER PLATED" on underside of spoon handle (Cat. #1185).



Plate 15: Smoking pipe fragments recovered from the Coulson site. Left, undecorated stem with tapered bite (Cat. #991); centre, bowl fragment with tiers of vertical moulding (Cat. #990); right, bowl fragment with unidentified moulded design (Cat. #985).



Plate 16: Mouth harp recovered from the Coulson site (Cat. #1250).





Plate 17: A selection of lithics recovered from AhGx-693 unit 510N-165E. Top, left, Kettle point piece of shatter (Cat. #L84); centre, Onondaga secondary knapping flake (Cat. #L79); right, Lockport secondary retouch flake (Cat. #L82). Bottom, left, Onondaga flake fragment (Cat. #L80); centre, Lockport secondary knapping flake (Cat. #L81); right, Lockport flake fragment (Cat. #L83).



Plate 18: Formal tools recovered from AhGx-693. Left, Bois blanc middle stage biface (Cat. #L18), centre, Bois blanc late stage biface (Cat. #L37), right, Onondaga Early Woodland Meadowood projectile point fragment (Cat. #L34).





Plate 19: All lithics recovered from AhGx-694. Left, Onondaga Middle Woodland Snyders projectile point (Cat. #L5); right, Kettle point secondary retouch flake (Cat. #L6).



Plate 20: A selection of lithics recovered from AhGx-696 unit 505N-212E. Left, piece of Lockport shatter (Cat. #L54); centre, Lockport secondary knapping flake (Cat. #L52); right, Lockport secondary retouch flake (Cat. #L53).





Plate 21: Formal tools recovered from AhGx-696. Top, left, Onondaga projectile point tip (Cat. L35), centre, Lockport scraper (Cat. #L54), right, Onondaga scraper (Cat. #L84). Bottom, left, Lockport biface fragment (Cat. #L62), right, Bois blanc end scraper (Cat. #L90).



APPENDIX A: The Coulson site (AhGx-691) Artifact Inventory



Stage 3 Ceramic Inventory
The Coulson Site (AhGx-691)

**Context
Stratum**

Cat#	Qty	Ware	Motif	Form	Comments
Surface					
50	4	Unidentifiable	Undecorated	Unidentifiable	Portion: Body; Small fragments; partially exfoliated
51	57	RWE	Undecorated	Unidentifiable	Portion: Body; Small fragments; partially exfoliated
52	9	RWE	Undecorated	Unidentifiable	Portion: Base; Small fragments; partially exfoliated
53	5	Unidentifiable	Undecorated	Unidentifiable	Portion: Body; Small fragments; completely exfoliated
54	3	RWE	Undecorated	Unidentifiable	Portion: Rim; Small fragments; partially exfoliated
55	4	Ironstone	Undecorated	Unidentifiable	Portion: Body; Small fragments; partially exfoliated
56	1	Unidentifiable	Transfer Print - Willow Pattern	Unidentifiable	Portion: Body; Small fragment; partially exfoliated
57	5	RWE	Spongeware	Unidentifiable	Portion: Base; Small fragments; partially exfoliated
58	13	RWE	Spongeware	Unidentifiable	Portion: Body; Small fragments; partially exfoliated
59	2	RWE	Spongeware	Unidentifiable	Portion: Rim; Small fragments; partially exfoliated
60	2	RWE	Edgeware - Straight	Flatware	Portion: Rim; Small fragments; partially exfoliated
61	1	Unidentifiable	Edgeware - Chicken Claw	Flatware	Portion: Body; Small fragment; partially exfoliated
62	6	RWE	Transfer Print - General	Unidentifiable	Portion: Body; Small fragments; unidentified blue transfer motif; partially exfoliated
63	3	RWE	Transfer Print - General	Unidentifiable	Portion: Rim; Small fragments; unidentified blue transfer motif; partially exfoliated
64	5	RWE	Hand Painted - Late Palette	Unidentifiable	Portion: Body; Small fragments; red and green hand-painted floral motif; partially exfoliated
65	2	RWE	Factory Slip - General	Hollowware	Portion: Body; Small fragments; unidentified blue and brown factory motif; partially exfoliated
66	1	RWE	Factory Slip - Banded	Hollowware	Portion: Body; Small fragment; blue and brown factory bands; partially exfoliated
67	1	Unidentifiable	Unidentified	Unidentifiable	Portion: Rim; Small fragment; unidentified motif; partially exfoliated
68	1	RWE	Factory Slip - General	Hollowware	Portion: Body; Small fragment; unidentified blue and brown factory motif; heavily exfoliated
69	1	Unidentifiable	Edgeware - General	Unidentifiable	Portion: Body; Small fragment; unidentified green edge motif; partially exfoliated
70	4	Yellow Ware	Undecorated	Hollowware	Portion: Body; Small fragments; partially exfoliated
71	5	Red Earthenware - Coarse	Glazed	Hollowware	Portion: Body; Small fragments; brown glaze; partially exfoliated
72	1	Red Earthenware - Coarse	Glazed	Hollowware	Portion: Body; Small fragment; light brown glaze; partially exfoliated

Stage 3 Ceramic Inventory
The Coulson Site (AhGx-691)

Context					
Stratum					
Cat#	Qty	Ware	Motif	Form	Comments
73	10	Red Earthenware - Coarse	Undecorated	Hollowware	Portion: Body; Small fragments; partially exfoliated
<i>Sub-Total: 146</i>					
<i>Surface Sub-Total: 146</i>					
Unit 480N-170E					
Ploughzone					
75	1	RWE	Undecorated	Unidentifiable	Portion: Body; Small fragment; partially exfoliated
<i>Ploughzone Sub-Total: 1</i>					
<i>Unit Sub-Total: 1</i>					
Unit 480N-190E					
Ploughzone					
80	3	RWE	Undecorated	Unidentifiable	Portion: Body; Small fragments; partially exfoliated
81	1	Red Earthenware - Coarse	Undecorated	Unidentifiable	Portion: Body; Small fragment; completely exfoliated
82	1	RWE	Spongeware	Hollowware	Portion: Body; Small fragment; blue sponge motif on interior and exterior; partially exfoliated
83	1	RWE	Transfer Print - Willow Pattern	Unidentifiable	Portion: Rim; Small fragment; partially exfoliated
84	1	RWE	Transfer Print - Chinoiserie	Unidentifiable	Portion: Body; Small fragment; partially exfoliated
<i>Ploughzone Sub-Total: 7</i>					
<i>Unit Sub-Total: 7</i>					
Unit 480N-200E					
Ploughzone					
90	2	RWE	Undecorated	Unidentifiable	Portion: Body; Small fragments; partially exfoliated
91	1	RWE	Transfer Print - General	Unidentifiable	Portion: Rim; Small fragment; unidentified blue transfer motif; heavily exfoliated
92	1	Unidentifiable	Undecorated	Unidentifiable	Portion: Body; Small fragment; completely exfoliated
93	1	RWE	Transfer Print - General	Unidentifiable	Portion: Body; Small fragment; blue floral transfer motif; partially exfoliated
94	4	Red Earthenware - Coarse	Glazed	Hollowware	Portion: Body; Small fragments; brown glaze; partially exfoliated

Stage 3 Ceramic Inventory
The Coulson Site (AhGx-691)

Context						
Stratum						
Cat#	Qty	Ware	Motif	Form	Comments	
95	4	Red Earthenware - Coarse	Undecorated	Hollowware	Portion: Body; Small fragments; completely exfoliated	
<i>Ploughzone Sub-Total: 13</i>						
<i>Unit Sub-Total: 13</i>						
Unit 480N-210E						
Ploughzone						
100	1	RWE	Transfer Print - General	Unidentifiable	Portion: Body; Small fragment; blue floral transfer motif; partially exfoliated	
101	1	Unidentifiable	Undecorated	Unidentifiable	Portion: Body; Small fragment; completely exfoliated	
102	4	RWE	Undecorated	Unidentifiable	Portion: Body; Small fragments; partially exfoliated	
103	1	Yellow Ware	Undecorated	Unidentifiable	Portion: Body; Small fragment; partially exfoliated	
104	3	Red Earthenware - Refined	Jet ware	Hollowware	Portion: Body; Small fragments	
<i>Ploughzone Sub-Total: 10</i>						
<i>Unit Sub-Total: 10</i>						
Unit 480N-220E						
Ploughzone						
110	1	Ironstone	Moulded - Wheatware	Flatware	Portion: Rim; Small fragment; moulded wheatware motif; partially exfoliated	
111	1	RWE	Undecorated	Unidentifiable	Portion: Body; Small fragment; partially exfoliated	
<i>Ploughzone Sub-Total: 2</i>						
<i>Unit Sub-Total: 2</i>						
Unit 490N-180E						
Ploughzone						
115	1	RWE	Undecorated	Flatware	Portion: Body; Small exfoliated sherd	
116	1	Red Earthenware - Coarse	Glazed	Hollowware	Portion: Body; Exterior exfoliated, brown glaze on interior	
<i>Ploughzone Sub-Total: 2</i>						
<i>Unit Sub-Total: 2</i>						

Stage 3 Ceramic Inventory
The Coulson Site (AhGx-691)

Context		Stratum		Cat#	Qty	Ware	Motif	Form	Comments
Unit 490N-190E									
Ploughzone									
	120	2	RWE			Edgeware - General		Flatware	Portion: Body; Small fragments; blue edge motif; partially exfoliated
	121	1	RWE			Undecorated		Unidentifiable	Portion: Body; Small fragment; partially exfoliated
	122	1	RWE			Undecorated		Unidentifiable	Portion: Rim; Small fragments; partially exfoliated
	123	1	Yellow Ware			Undecorated		Unidentifiable	Portion: Body; Small body fragment; partially exfoliated
	124	2	Red Earthenware - Coarse			Undecorated		Hollowware	Portion: Body; Small fragments; completely exfoliated
<i>Ploughzone Sub-Total: 7</i>									
<i>Unit Sub-Total: 7</i>									
Unit 490N-200E									
Ploughzone									
	130	9	RWE			Undecorated		Unidentifiable	Portion: Body; Small fragments; partially exfoliated
	131	3	Ironstone			Undecorated		Unidentifiable	Portion: Rim; Small fragments; partially exfoliated
	132	3	RWE			Spongeware		Unidentifiable	Portion: Body; Small fragments; partially exfoliated
	133	1	Unidentifiable			Factory Slip - Banded		Hollowware	Portion: Body; Small fragment; unidentified blue and brown factory motif; partially exfoliated
	134	4	RWE			Transfer Print - General		Unidentifiable	Portion: Body; Small fragments; unidentified blue transfer motif; partially exfoliated
	135	4	Red Earthenware - Coarse			Glazed		Hollowware	Portion: Body; Small fragments; brown glaze; partially exfoliated
	136	1	Red Earthenware - Coarse			Undecorated		Hollowware	Portion: Body; Small fragments; completely exfoliated
<i>Ploughzone Sub-Total: 25</i>									
<i>Unit Sub-Total: 25</i>									
Unit 490N-205E									
Ploughzone									
	140	1	Pearlware			Edgeware - Straight		Flatware	Portion: Rim; Small fragment; partially exfoliated
	141	1	RWE			Hand Painted - Late Palette		Unidentifiable	Portion: Body; Small fragment; black and green hand-painted floral motif; partially exfoliated

Stage 3 Ceramic Inventory
The Coulson Site (AhGx-691)

Context		Cat#	Qty	Ware	Motif	Form	Comments
Stratum		142	4	RWE	Undecorated	Unidentifiable	Portion: Body; Small fragments; partially exfoliated
		143	5	Ironstone	Undecorated	Unidentifiable	Portion: Body; Small fragments; partially exfoliated
		144	2	Unidentifiable	Undecorated	Unidentifiable	Portion: Body; Small fragments; partially exfoliated
		145	1	Yellow Ware	Undecorated	Hollowware	Portion: Body; Small fragment; completely exfoliated
		146	5	Red Earthenware - Coarse	Glazed	Hollowware	Portion: Body; Small fragments; brown glaze; partially exfoliated
<i>Ploughzone Sub-Total: 19</i>							
<i>Unit Sub-Total: 19</i>							
Unit 490N-210E							
Ploughzone							
		150	1	Unidentifiable	Undecorated	Unidentifiable	Portion: Body; Small fragment; completely exfoliated
		151	3	RWE	Undecorated	Unidentifiable	Portion: Body; Small fragments; partially exfoliated
		152	7	Ironstone	Undecorated	Unidentifiable	Portion: Body; Small fragments; partially exfoliated
		153	1	RWE	Undecorated	Unidentifiable	Portion: Rim; Small fragment; partially exfoliated
		154	2	Red Earthenware - Coarse	Glazed	Hollowware	Portion: Body; Small fragments; brown glaze; partially exfoliated
<i>Ploughzone Sub-Total: 14</i>							
<i>Unit Sub-Total: 14</i>							
Unit 490N-220E							
Ploughzone							
		160	2	RWE	Undecorated	Unidentifiable	Portion: Body; Small fragments; partially exfoliated
		161	1	RWE	Undecorated	Unidentifiable	Portion: Rim; Small fragment; partially exfoliated
		162	1	RWE	Spongeware	Unidentifiable	Portion: Body; Small fragment; partially exfoliated
		163	1	RWE	Transfer Print - General	Unidentifiable	Portion: Body; Small fragment; unidentified blue transfer motif; partially exfoliated
		164	1	Buff Earthenware	Glazed	Hollowware	Portion: Body; Small fragment; dark brown transfer motif on interior and exterior
<i>Ploughzone Sub-Total: 6</i>							
<i>Unit Sub-Total: 6</i>							

Stage 3 Ceramic Inventory
The Coulson Site (AhGx-691)

Context		Stratum		Cat#	Qty	Ware	Motif	Form	Comments
Unit 490N-230E				Ploughzone					
	170	3	RWE	Undecorated		Unidentifiable	Portion: Body; Small fragments; partially exfoliated		
	171	1	RWE	Spongeware		Unidentifiable	Portion: Rim; Small fragment; blue sponge motif on interior; partially exfoliated		
	172	1	Yellow Ware	Undecorated		Hollowware	Portion: Body; Small fragment; partially exfoliated		
<i>Ploughzone Sub-Total: 5</i>				<i>Unit Sub-Total: 5</i>					
Unit 495N-205E				Ploughzone					
	175	14	RWE	Undecorated		Unidentifiable	Portion: Body; Small fragments; partially exfoliated		
	176	3	Ironstone	Undecorated		Unidentifiable	Portion: Body; Small fragments; partially exfoliated		
	177	1	Unidentifiable	Undecorated		Unidentifiable	Portion: Body; Small fragment; partially exfoliated		
	178	3	Unidentifiable	Undecorated		Unidentifiable	Portion: Body; Small fragments; completely exfoliated		
	179	5	RWE	Spongeware		Unidentifiable	Portion: Body; Small fragments; partially exfoliated		
	180	2	Red Earthenware - Coarse	Undecorated		Hollowware	Portion: Body; Small fragments; partially exfoliated		
<i>Ploughzone Sub-Total: 28</i>				<i>Unit Sub-Total: 28</i>					
Unit 495N-210E				Ploughzone					
	185	3	RWE	Spongeware		Unidentifiable	Portion: Body; Small fragments; partially exfoliated		
	186	1	RWE	Transfer Print - General		Unidentifiable	Portion: Body; Small fragment; blue floral transfer motif; partially exfoliated		
	187	1	RWE	Hand Painted - Late Palette		Unidentifiable	Portion: Rim; Small fragment; red hand-painted band on edge of rim; partially exfoliated		
	188	1	RWE	Transfer Print - General		Unidentifiable	Portion: Rim; Small fragment; unidentified blue transfer motif; partially exfoliated		
	189	3	Unidentifiable	Undecorated		Unidentifiable	Portion: Body; Small fragments; completely exfoliated		
	190	1	RWE	Undecorated		Unidentifiable	Portion: Rim; Small fragments; partially exfoliated		
	191	2	Unidentifiable	Undecorated		Unidentifiable	Portion: Body; Small fragments; partially exfoliated		
	192	11	RWE	Undecorated		Unidentifiable	Portion: Body; Small fragments; partially exfoliated		

Stage 3 Ceramic Inventory
The Coulson Site (AhGx-691)

Context						
Stratum						
Cat#	Qty	Ware	Motif	Form	Comments	
193	5	Ironstone	Undecorated	Unidentifiable	Portion: Body; Small fragments; partially exfoliated	
194	2	Red Earthenware - Coarse	Glazed	Hollowware	Portion: Body; Small fragments; brown glaze; partially exfoliated	
195	1	Red Earthenware - Coarse	Undecorated	Unidentifiable	Portion: Body; Small fragment; completely exfoliated	
<i>Ploughzone Sub-Total: 31</i>						
<i>Unit Sub-Total: 31</i>						
Unit 495N-215E						
Ploughzone						
200	16	RWE	Undecorated	Unidentifiable	Portion: Body; Small fragments; partially exfoliated	
201	1	Unidentifiable	Undecorated	Unidentifiable	Portion: Body; Small fragment; completely exfoliated	
202	1	Ironstone	Undecorated	Unidentifiable	Portion: Body; Small fragment; partially exfoliated	
203	1	RWE	Undecorated	Unidentifiable	Portion: Rim; Small fragment; partially exfoliated	
204	2	RWE	Undecorated	Unidentifiable	Portion: Base; Small fragments; partially exfoliated	
205	1	Unidentifiable	Undecorated	Unidentifiable	Portion: Body; Small fragment; partially exfoliated	
206	1	RWE	Spongeware	Hollowware	Portion: Handle; Small fragment; heavily exfoliated	
207	2	Unidentifiable	Spongeware	Unidentifiable	Portion: Body; Small fragments; partially exfoliated	
208	1	RWE	Transfer Print - Willow Pattern	Unidentifiable	Portion: Body; Small fragment; partially exfoliated	
209	1	RWE	Transfer Print - Willow Pattern	Unidentifiable	Portion: Body; Small fragment; heavily exfoliated	
210	1	RWE	Hand Painted - Monochrome Blue	Teacup	Portion: Rim; Small fragment; blue hand-painted band on exterior; partially exfoliated	
211	1	RWE	Hand Painted - Monochrome Blue	Unidentifiable	Portion: Body; Small fragment; blue hand-painted circles; partially exfoliated	
212	1	Yellow Ware	Undecorated	Hollowware	Portion: Rim; Small fragment; partially exfoliated	
213	4	Red Earthenware - Coarse	Undecorated	Hollowware	Portion: Body; Small fragments; partially exfoliated	
214	1	Red Earthenware - Coarse	Glazed	Hollowware	Portion: Body; Small fragment; brown glaze; heavily exfoliated	

Ploughzone Sub-Total: 35

Unit Sub-Total: 35

Stage 3 Ceramic Inventory
The Coulson Site (AhGx-691)

Context		Cat#	Qty	Ware	Motif	Form	Comments
Stratum							
Unit 495N-220E							
Ploughzone							
	220	2	RWE	Undecorated	Unidentifiable	Portion: Body; Small fragments; partially exfoliated	
	221	4	RWE	Undecorated	Unidentifiable	Portion: Body; Small fragments; partially exfoliated	
	222	1	Unidentifiable	Spongeware	Unidentifiable	Portion: Body; Small fragment; partially exfoliated	
	223	2	RWE	Transfer Print - Willow Pattern	Unidentifiable	Portion: Body; Small fragments; partially exfoliated	
<i>Ploughzone Sub-Total: 9</i>							
<i>Unit Sub-Total: 9</i>							
Unit 500N-160E							
Ploughzone							
	225	1	RWE	Transfer Print - Willow Pattern	Unidentifiable	Portion: Body; Small fragment; partially exfoliated	
<i>Ploughzone Sub-Total: 1</i>							
<i>Unit Sub-Total: 1</i>							
Unit 500N-170E							
Ploughzone							
	230	1	Unidentifiable	Factory Slip - General	Hollowware	Portion: Body; Small fragment; unidentified blue factory motif; partially exfoliated	
<i>Ploughzone Sub-Total: 1</i>							
<i>Unit Sub-Total: 1</i>							
Unit 500N-180E							
Ploughzone							
	235	2	RWE	Undecorated	Unidentifiable	Portion: Body; Small fragments; partially exfoliated	
<i>Ploughzone Sub-Total: 2</i>							
<i>Unit Sub-Total: 2</i>							

Stage 3 Ceramic Inventory
The Coulson Site (AhGx-691)

Context					
Stratum					
Cat#	Qty	Ware	Motif	Form	Comments
Unit 500N-190E					
Ploughzone					
240	3	RWE	Undecorated	Unidentifiable	Portion: Base; Small fragments; partially exfoliated
241	10	RWE	Undecorated	Unidentifiable	Portion: Body; Small fragments; partially exfoliated
242	2	Unidentifiable	Undecorated	Unidentifiable	Portion: Body; Small fragments; partially exfoliated
243	1	Unidentifiable	Undecorated	Unidentifiable	Portion: Body; Small fragment; completely exfoliated
244	2	RWE	Spongeware	Unidentifiable	Portion: Rim; Small fragments; partially exfoliated
245	1	Unidentifiable	Spongeware	Unidentifiable	Portion: Body; Small fragment; partially exfoliated
246	1	RWE	Undecorated	Unidentifiable	Portion: Rim; Small fragment; heavily exfoliated
247	2	Yellow Ware	Undecorated	Hollowware	Portion: Body; Small fragments; partially exfoliated
248	2	Red Earthenware - Coarse	Undecorated	Hollowware	Portion: Body; Small fragments; partially exfoliated
249	4	Red Earthenware - Coarse	Glazed	Hollowware	Portion: Body; Small fragments; partially exfoliated
<i>Ploughzone Sub-Total: 28</i>					
<i>Unit Sub-Total: 28</i>					
Unit 500N-200E					
Ploughzone					
255	16	RWE	Undecorated	Unidentifiable	Portion: Body; Small fragments; partially exfoliated
256	1	Unidentifiable	Undecorated	Unidentifiable	Portion: Body; Small fragment; completely exfoliated
257	2	Ironstone	Undecorated	Unidentifiable	Portion: Body; Small fragments; partially exfoliated
258	1	Unidentifiable	Undecorated	Unidentifiable	Portion: Base; Small fragment; partially exfoliated
259	3	Unidentifiable	Undecorated	Unidentifiable	Portion: Body; Small fragments; partially exfoliated
260	2	Unidentifiable	Undecorated	Unidentifiable	Portion: Rim; Small fragments; partially exfoliated
261	2	RWE	Factory Slip - Banded	Hollowware	Portion: Body; Small fragments; blue factory bands; partially exfoliated
262	2	RWE	Spongeware	Unidentifiable	Portion: Body; Small fragments; partially exfoliated
263	1	RWE	Hand Painted - Late Palette	Unidentifiable	Portion: Rim; Small rim fragment; red hand-painted band; partially exfoliated
264	4	RWE	Hand Painted - Late Palette	Unidentifiable	Portion: Body; Small fragments; black and green hand-painted floral motif; partially exfoliated
265	1	Yellow Ware	Undecorated	Hollowware	Portion: Body; Small fragment; partially exfoliated

Stage 3 Ceramic Inventory
The Coulson Site (AhGx-691)

Context		Cat#	Qty	Ware	Motif	Form	Comments
Stratum							
		266	4	Red Earthenware - Coarse	Glazed	Hollowware	Portion: Body; Small fragments; brown glaze; partially exfoliated
		267	6	Red Earthenware - Coarse	Undecorated	Hollowware	Portion: Body; Small fragments; partially exfoliated
<i>Ploughzone Sub-Total: 45</i>							
<i>Unit Sub-Total: 45</i>							
Unit 500N-205E							
Ploughzone							
		270	4	Ironstone	Undecorated	Unidentifiable	Portion: Body; Small fragments; partially exfoliated
		271	42	RWE	Undecorated	Unidentifiable	Portion: Body; Small fragments; partially exfoliated
		272	1	RWE	Undecorated	Unidentifiable	Portion: Base; Small fragment; partially exfoliated
		273	1	Unidentifiable	Undecorated	Unidentifiable	Portion: Body; Small fragment; completely exfoliated
		274	2	RWE	Undecorated	Unidentifiable	Portion: Rim; Small fragments; partially exfoliated
		275	4	Yellow Ware	Undecorated	Hollowware	Portion: Body; Small fragments; partially exfoliated
		276	3	Yellow Ware	Undecorated	Hollowware	Portion: Body; Small fragments; completely exfoliated
		277	3	RWE	Hand Painted - Late Palette	Unidentifiable	Portion: Body; Small fragments; green and red hand-painted floral motif; partially exfoliated
		278	1	RWE	Hand Painted - Late Palette	Unidentifiable	Portion: Rim; Small fragment; red hand-painted band; heavily exfoliated
		279	1	RWE	Hand Painted - Monochrome Blue	Hollowware	Portion: Body; Small fragment; blue hand-painted band on exterior; partially exfoliated
		280	1	RWE	Hand Painted - Monochrome Blue	Teacup	Portion: Rim; Small fragment; blue hand-painted band and sponge motif on exterior; partially exfoliated interior
		281	3	RWE	Spongeware	Unidentifiable	Portion: Body; Small fragments; blue sponge motif; partially exfoliated
		282	1	RWE	Spongeware	Unidentifiable	Portion: Rim; Small fragment; blue sponge motif on interior; partially exfoliated
		283	1	RWE	Spongeware	Unidentifiable	Portion: Base; Small fragment; blue sponge motif on interior; partially exfoliated
		284	4	RWE	Transfer Print - General	Unidentifiable	Portion: Body; Small fragments; unidentified blue sponge motif; partially exfoliated
		285	1	RWE	Edgeware - General	Flatware	Portion: Rim; Small fragment; partially exfoliated
		286	2	RWE	Transfer Print - Willow Pattern	Unidentifiable	Portion: Body; Small fragments; partially exfoliated
		287	1	RWE	Transfer Print - Willow Pattern	Unidentifiable	Portion: Rim; Small fragment; heavily exfoliated
		288	2	RWE	Factory Slip - Banded	Hollowware	Portion: Body; Small fragments; brown and blue factory bands; partially exfoliated

Stage 3 Ceramic Inventory
The Coulson Site (AhGx-691)

Context
Stratum

Cat#	Qty	Ware	Motif	Form	Comments
289	2	Unidentifiable	Undecorated	Unidentifiable	Portion: Body; Small fragments; partially exfoliated
290	5	Red Earthenware - Coarse	Glazed	Hollowware	Portion: Body; Small fragments; brown glaze; partially exfoliated
291	3	Red Earthenware - Coarse	Undecorated	Hollowware	Portion: Body; Small fragments; partially exfoliated
<i>Ploughzone Sub-Total: 88</i>					
<i>Unit Sub-Total: 88</i>					
Unit 500N-210E					
Ploughzone					
295	5	Unidentifiable	Undecorated	Unidentifiable	Portion: Body; Small fragments; partially exfoliated
296	2	RWE	Undecorated	Unidentifiable	Portion: Base; Small fragments; partially exfoliated
297	22	RWE	Undecorated	Unidentifiable	Portion: Body; Small fragments; partially exfoliated
298	1	Unidentifiable	Undecorated	Unidentifiable	Portion: Body; Small fragment; completely exfoliated
299	1	RWE	Transfer Print - Willow Pattern	Unidentifiable	Portion: Body; Small fragment; partially exfoliated
300	5	RWE	Spongeware	Unidentifiable	Portion: Body; Small fragments; partially exfoliated
301	3	RWE	Hand Painted - Late Palette	Unidentifiable	Portion: Body; Small fragments; green and blue hand-painted floral motif; partially exfoliated
302	1	RWE	Hand Painted - Late Palette	Unidentifiable	Portion: Rim; Small fragment; red hand-painted band on interior; partially exfoliated
303	2	RWE	Transfer Print - General	Unidentifiable	Portion: Rim; Small fragments; unidentified blue transfer motif; partially exfoliated
304	1	RWE	Hand Painted - Monochrome Blue	Hollowware	Portion: Rim; Small fragment; blue hand-painted band on exterior; partially exfoliated
305	1	RWE	Hand Painted - Monochrome Blue	Unidentifiable	Portion: Rim; Small fragment; unidentified blue hand-painted motif on interior; partially exfoliated
306	1	RWE	Transfer Print - General	Unidentifiable	Portion: Body; Small fragment; unidentified blue transfer motif; partially exfoliated
307	1	RWE	Edgeware - Embossed Design	Flatware	Portion: Rim; Small fragment; unidentified blue embossed motif; heavily exfoliated
308	1	Yellow Ware	Undecorated	Unidentifiable	Portion: Body; Small fragment; partially exfoliated
309	1	Red Earthenware - Coarse	Glazed	Hollowware	Portion: Body; Small fragment; partially exfoliated
310	5	Red Earthenware - Coarse	Undecorated	Hollowware	Portion: Body; Small fragments; partially exfoliated

Stage 3 Ceramic Inventory
The Coulson Site (AhGx-691)

Context		Stratum		Cat#	Qty	Ware	Motif	Form	Comments
<i>Ploughzone Sub-Total: 53</i>									
<i>Unit Sub-Total: 53</i>									
Unit 500N-215E									
Ploughzone									
	315	4	Unidentifiable			Undecorated		Unidentifiable	Portion: Body; Small fragments; completely exfoliated
	316	11	RWE			Undecorated		Unidentifiable	Portion: Body; Small fragments; partially exfoliated
	317	1	RWE			Undecorated		Unidentifiable	Portion: Rim; Small fragment; partially exfoliated
	318	2	RWE			Hand Painted - Late Palette		Unidentifiable	Portion: Rim; Small fragments; red hand-painted bands; partially exfoliated
	319	3	RWE			Hand Painted - Late Palette		Unidentifiable	Portion: Body; Small fragments; red; green and black hand-painted floral motif; partially exfoliated
	320	2	RWE			Factory Slip - Banded		Hollowware	Portion: Body; Small fragments; blue and green factory bands; partially exfoliated
	321	9	RWE			Spongeware		Unidentifiable	Portion: Body; Small fragments; partially exfoliated
	322	4	RWE			Transfer Print - General		Unidentifiable	Portion: Body; Small fragments; unidentified blue transfer motif; partially exfoliated
	323	1	RWE			Edgeware - General		Flatware	Portion: Body; Small fragment; blue edge motif; partially exfoliated
	324	1	RWE			Transfer Print - General		Unidentifiable	Portion: Rim; Small fragment; unidentified blue transfer motif; possibly blue willow; heavily exfoliated
	325	2	Yellow Ware			Undecorated		Hollowware	Portion: Body; Small fragments; partially exfoliated
	326	3	Red Earthenware - Coarse			Undecorated		Hollowware	Portion: Body; Small fragments; completely exfoliated
	327	2	Red Earthenware - Coarse			Glazed		Hollowware	Portion: Body; Small fragments; heavily exfoliated
	328	1	Red Earthenware - Coarse			Glazed		Hollowware	Portion: Rim; Small fragment; dark brown glaze; string rim; partially exfoliated
<i>Ploughzone Sub-Total: 46</i>									
<i>Unit Sub-Total: 46</i>									
Unit 500N-220E									
Ploughzone									
	330	2	Unidentifiable			Undecorated		Unidentifiable	Portion: Body; Small fragments; completely exfoliated
	331	2	RWE			Factory Slip - Banded		Hollowware	Portion: Body; Small fragments; brown and blue factory bands; partially exfoliated
	332	9	RWE			Undecorated		Unidentifiable	Portion: Body; Small fragments; partially exfoliated

Stage 3 Ceramic Inventory
The Coulson Site (AhGx-691)

Context

Stratum

Cat#	Qty	Ware	Motif	Form	Comments
333	4	RWE	Spongeware	Unidentifiable	Portion: Body; Small fragments; partially exfoliated
334	2	Unidentifiable	Undecorated	Unidentifiable	Portion: Body; Small fragments; partially exfoliated
335	1	RWE	Unidentified	Hollowware	Portion: Body; Small fragment; unidentified blue motif on exterior; heavily exfoliated
336	1	RWE	Hand Painted - Monochrome Blue	Teacup	Portion: Rim; Small fragment; blue hand-painted band on exterior; possibly sponge motif; partially exfoliated
337	1	Yellow Ware	Undecorated	Hollowware	Portion: Body; Small fragment; partially exfoliated
338	1	Yellow Ware	Undecorated	Hollowware	Portion: Body; Small fragment; completely exfoliated
339	1	Red Earthenware - Coarse	Glazed	Hollowware	Portion: Body; Small fragment; brown glaze; heavily exfoliated
<i>Ploughzone Sub-Total: 24</i>					
<i>Unit Sub-Total: 24</i>					
Unit 500N-230E					
Ploughzone					
345	1	RWE	Undecorated	Unidentifiable	Portion: Body; Small fragment; perforated holes; partially exfoliated
346	3	RWE	Transfer Print - General	Unidentifiable	Portion: Body; Small fragments; unidentified blue transfer motif; partially exfoliated
347	1	RWE	Undecorated	Unidentifiable	Portion: Body; Small fragment; partially exfoliated
348	1	Red Earthenware - Coarse	Undecorated	Hollowware	Portion: Body; Small fragment; partially exfoliated
<i>Ploughzone Sub-Total: 6</i>					
<i>Unit Sub-Total: 6</i>					
Unit 502N-213E					
Ploughzone					
350	4	Ironstone	Undecorated	Unidentifiable	Portion: Body; Small fragments; partially exfoliated
351	24	RWE	Undecorated	Unidentifiable	Portion: Body; Small fragments; partially exfoliated
352	3	RWE	Undecorated	Unidentifiable	Portion: Base; Small fragments; partially exfoliated
353	2	RWE	Undecorated	Unidentifiable	Portion: Rim; Small fragments; partially exfoliated
354	1	RWE	Edgeware - Straight	Flatware	Portion: Rim; Small fragment; blue straight edge motif; partially exfoliated
355	3	RWE	Spongeware	Hollowware	Portion: Body; Small fragments; blue sponge motif on exterior; bell shape; partially exfoliated

Stage 3 Ceramic Inventory
The Coulson Site (AhGx-691)

Context
Stratum

Cat#	Qty	Ware	Motif	Form	Comments
356	10	RWE	Spongeware	Unidentifiable	Portion: Body; Small fragments; partially exfoliated
357	1	RWE	Spongeware	Unidentifiable	Portion: Rim; Small fragment; partially exfoliated
358	1	RWE	Factory Slip - Banded	Hollowware	Portion: Body; Small fragment; blue and brown factory bands; partially exfoliated
359	1	RWE	Factory Slip - Cable	Hollowware	Portion: Body; Small fragment; green factory motif with blue and brown cable motif; partially exfoliated
360	2	RWE	Transfer Print - General	Unidentifiable	Portion: Body; Small fragments; unidentified blue transfer motif; partially exfoliated
361	1	RWE	Edgeware - Evenly Scalloped	Flatware	Portion: Rim; Small fragment; red scalloped edge motif; heavily exfoliated
362	1	Unidentifiable	Undecorated	Unidentifiable	Portion: Body; Small fragment; heavily exfoliated
363	3	Yellow Ware	Undecorated	Hollowware	Portion: Body; Small fragments; partially exfoliated
364	1	Yellow Ware	Undecorated	Unidentifiable	Portion: Body; Small fragment; partially exfoliated
365	1	Red Earthenware - Coarse	Glazed	Hollowware	Portion: Body; Small fragment; brown glaze; heavily exfoliated
366	1	Red Earthenware - Coarse	Glazed	Hollowware	Portion: Rim; Small fragment; brown glaze on interior; string rim; partially exfoliated
<i>Ploughzone Sub-Total: 60</i>					
<i>Unit Sub-Total: 60</i>					
Unit 503N-205E					
Ploughzone					
390	2	Unidentifiable	Undecorated	Unidentifiable	Portion: Body; Small fragments; completely exfoliated
391	4	RWE	Undecorated	Unidentifiable	Portion: Base; Small fragments; partially exfoliated
392	32	RWE	Undecorated	Unidentifiable	Portion: Body; Small fragments; partially exfoliated
393	2	RWE	Undecorated	Unidentifiable	Portion: Body; Small fragments; green and black hand-painted band and floral motif; partially exfoliated
394	2	RWE	Hand Painted - Late Palette	Unidentifiable	Portion: Rim; Small fragments; blue and red hand-painted bands; partially exfoliated
395	1	RWE	Hand Painted - Late Palette	Teacup	Portion: Rim; Small fragment; red hand-painted band on interior and exterior; partially exfoliated; likely mends with cat. 492
396	3	RWE	Edgeware - Evenly Scalloped	Flatware	Portion: Rim; Small fragments; partially exfoliated
397	1	RWE	Transfer Print - Willow Pattern	Unidentifiable	Portion: Body; Small fragment; partially exfoliated
398	3	RWE	Transfer Print - General	Unidentifiable	Portion: Body; Small fragments; partially exfoliated

Stage 3 Ceramic Inventory
The Coulson Site (AhGx-691)

Context

Stratum

Cat#	Qty	Ware	Motif	Form	Comments
399	8	Ironstone	Undecorated	Unidentifiable	Portion: Body; Small fragments; partially exfoliated
400	2	Red Earthenware - Coarse	Glazed	Hollowware	Portion: Body; Small fragments; partially exfoliated
401	5	Red Earthenware - Coarse	Glazed	Hollowware	Portion: Body; Small fragments; partially exfoliated
402	1	Unidentifiable	Undecorated	Unidentifiable	Portion: Body; Small fragment; partially exfoliated
403	1	Unidentifiable	Hand Painted - General	Unidentifiable	Portion: Rim; Small fragment; unidentified purple hand-painted motif; partially exfoliated
404	1	RWE	Factory Slip - General	Hollowware	Portion: Body; Small fragment; brown factory glaze; heavily exfoliated
405	3	RWE	Spongeware	Unidentifiable	Portion: Body; Small fragments; partially exfoliated
406	2	RWE	Spongeware	Unidentifiable	Portion: Body; Small fragments; partially exfoliated
407	2	Yellow Ware	Undecorated	Hollowware	Portion: Body; Small fragments; partially exfoliated
408	1	Yellow Ware	Undecorated	Hollowware	Portion: Body; Small fragment; completely exfoliated

Ploughzone Sub-Total: 76

Unit Sub-Total: 76

Unit 503N-210E

Ploughzone

370	2	RWE	Undecorated	Unidentifiable	Portion: Base; Small fragments; partially exfoliated
371	3	RWE	Undecorated	Unidentifiable	Portion: Rim; Small fragments; partially exfoliated
372	1	RWE	Undecorated	Unidentifiable	Portion: Body; Small fragment; completely exfoliated
373	1	Unidentifiable	Undecorated	Unidentifiable	Portion: Body; Small fragments; partially exfoliated
374	1	RWE	Edgeware - Straight	Flatware	Portion: Rim; Small fragment; partially exfoliated
375	2	RWE	Undecorated	Unidentifiable	Portion: Rim; Small fragments; red hand-painted band; partially exfoliated
376	6	RWE	Spongeware	Unidentifiable	Portion: Rim; Small fragments; partially exfoliated
377	9	RWE	Spongeware	Unidentifiable	Portion: Body; Small fragments; partially exfoliated
378	1	RWE	Transfer Print - General	Unidentifiable	Portion: Rim; Small fragment; unidentified blue transfer motif; heavily exfoliated
379	5	Ironstone	Undecorated	Unidentifiable	Portion: Base; Small fragments; partially exfoliated
380	32	RWE	Undecorated	Unidentifiable	Portion: Body; Small fragments; partially exfoliated
381	2	Yellow Ware	Glazed	Hollowware	Portion: Body; Small fragments; brown glaze on interior and exterior; partially exfoliated
382	4	Yellow Ware	Undecorated	Unidentifiable	Portion: Body; Small fragments; partially exfoliated

Stage 3 Ceramic Inventory
The Coulson Site (AhGx-691)

Context		Stratum		Cat#	Qty	Ware	Motif	Form	Comments
		383	3	Red Earthenware - Coarse	Glazed	Hollowware	Portion: Body; Small fragments; partially exfoliated		
		384	3	Red Earthenware - Coarse	Undecorated	Hollowware	Portion: Body; Small fragments; completely exfoliated		
<i>Ploughzone Sub-Total: 75</i>									
<i>Unit Sub-Total: 75</i>									
Unit 505N-170E									
Ploughzone									
		410	1	RWE	Spongeware	Unidentifiable	Portion: Body; Small fragment; partially exfoliated		
		411	1	RWE	Undecorated	Unidentifiable	Portion: Body; Small fragment; partially exfoliated		
<i>Ploughzone Sub-Total: 2</i>									
<i>Unit Sub-Total: 2</i>									
Unit 505N-200E									
Ploughzone									
		415	1	RWE	Undecorated	Unidentifiable	Portion: Base; Small fragment; partially exfoliated		
		416	1	RWE	Undecorated	Saucer	Portion: Rim; Small fragment; partially exfoliated		
		417	6	Ironstone	Undecorated	Unidentifiable	Portion: Body; Small fragments; partially exfoliated		
		418	1	RWE	Undecorated	Unidentifiable	Portion: Rim; Small fragment; partially exfoliated		
		419	2	Unidentifiable	Undecorated	Unidentifiable	Portion: Body; Small fragments; partially exfoliated		
		420	19	RWE	Undecorated	Unidentifiable	Portion: Body; Small fragments; partially exfoliated		
		421	1	RWE	Hand Painted - Monochrome Blue	Hollowware	Portion: Body; Small fragment; bell shape; blue hand-painted band on exterior; partially exfoliated		
		422	3	RWE	Hand Painted - Late Palette	Unidentifiable	Portion: Body; Small fragments; green; blue and black hand-painted floral motif; partially exfoliated		
		423	1	RWE	Spongeware	Teacup	Portion: Rim; Small fragment; blue sponge motif on exterior with blue hand-painted band on interior; heavily exfoliated		
		424	5	RWE	Undecorated	Unidentifiable	Portion: Body; Small fragments; partially exfoliated		
		425	1	RWE	Undecorated	Unidentifiable	Portion: Rim; Small fragment; partially exfoliated		
		426	2	RWE	Hand Painted - Monochrome Blue	Unidentifiable	Portion: Body; Small fragments; unidentified blue hand-painted motif; partially exfoliated		

Stage 3 Ceramic Inventory
The Coulson Site (AhGx-691)

Context
Stratum

Cat#	Qty	Ware	Motif	Form	Comments
427	3	RWE	Transfer Print - General	Unidentifiable	Portion: Rim; Small fragments; unidentified blue transfer motif; heavily exfoliated
428	1	Unidentifiable	Transfer Print - Willow Pattern	Unidentifiable	Portion: Body; Small fragment; partially exfoliated
429	1	RWE	Transfer Print - General	Unidentifiable	Portion: Rim; Small fragment; unidentified black transfer motif; partially exfoliated
430	1	Unidentifiable	Transfer Print - Willow Pattern	Unidentifiable	Portion: Body; Small fragment; heavily exfoliated
431	1	RWE	Factory Slip - Banded	Hollowware	Portion: Rim; Small fragment; blue factory band; partially exfoliated
432	1	RWE	Factory Slip - Cable	Hollowware	Portion: Body; Small fragment; green factory band with blue and brown cable motif; partially exfoliated
433	1	Unidentifiable	Glazed	Hollowware	Portion: Body; Small fragment; brown glaze; partially exfoliated
434	1	Yellow Ware	Undecorated	Hollowware	Portion: Body; Small fragment; partially exfoliated
435	8	Red Earthenware - Coarse	Glazed	Hollowware	Portion: Body; Small fragments; brown glaze; partially exfoliated
436	3	Red Earthenware - Coarse	Undecorated	Hollowware	Portion: Body; Small fragments; partially exfoliated
<i>Ploughzone Sub-Total: 64</i>					
<i>Unit Sub-Total: 64</i>					
Unit 505N-203E					
Ploughzone					
440	3	RWE	Hand Painted - Late Palette	Unidentifiable	Portion: Body; Small fragments; green; blue; black and red hand-painted floral motif; partially exfoliated
441	3	RWE	Spongeware	Unidentifiable	Portion: Rim; Small fragments; partially exfoliated
442	6	RWE	Spongeware	Unidentifiable	Portion: Body; Small fragments; partially exfoliated
443	1	RWE	Factory Slip - Banded	Hollowware	Portion: Body; Small fragment; brown and blue factory bands; partially exfoliated
444	3	RWE	Transfer Print - General	Unidentifiable	Portion: Rim; Small fragments; unidentified blue transfer motif; partially exfoliated
445	1	RWE	Undecorated	Unidentifiable	Portion: Rim; Small fragment; partially exfoliated
446	18	RWE	Undecorated	Unidentifiable	Portion: Body; Small fragments; partially exfoliated
447	1	Unidentifiable	Undecorated	Unidentifiable	Portion: Body; Small fragment; partially exfoliated
448	4	RWE	Undecorated	Unidentifiable	Portion: Base; Small fragments; partially exfoliated
450	5	Ironstone	Undecorated	Unidentifiable	Portion: Body; Small fragments; partially exfoliated
451	2	Unidentifiable	Undecorated	Unidentifiable	Portion: Body; Small fragments; completely exfoliated

Stage 3 Ceramic Inventory
The Coulson Site (AhGx-691)

Context							
Stratum		Cat#	Qty	Ware	Motif	Form	Comments
		452	3	Yellow Ware	Undecorated	Hollowware	Portion: Body; Small fragments; partially exfoliated
		453	4	Red Earthenware - Coarse	Glazed	Hollowware	Portion: Body; Small fragments; partially exfoliated
		454	1	Red Earthenware - Coarse	Undecorated	Hollowware	Portion: Body; Small fragment; partially exfoliated
<i>Ploughzone Sub-Total: 55</i>							
<i>Unit Sub-Total: 55</i>							
Unit 505N-205E							
Ploughzone							
		460	3	RWE	Undecorated	Unidentifiable	Portion: Rim; Small fragments; partially exfoliated
		461	2	RWE	Undecorated	Unidentifiable	Portion: Base; Small fragments; partially exfoliated
		462	3	Unidentifiable	Undecorated	Unidentifiable	Portion: Body; Small fragments; completely exfoliated
		463	31	RWE	Undecorated	Unidentifiable	Portion: Body; Small fragments; partially exfoliated
		464	6	RWE	Spongeware	Unidentifiable	Portion: Body; Small fragments; partially exfoliated
		465	1	RWE	Spongeware	Hollowware	Portion: Handle; Small fragment; partially exfoliated
		466	1	RWE	Spongeware	Unidentifiable	Portion: Base; Small fragment; partially exfoliated
		467	1	RWE	Edgeware - Straight	Flatware	Portion: Rim; Small fragment; partially exfoliated
		468	1	RWE	Edgeware - General	Flatware	Portion: Body; Small fragment; partially exfoliated
		469	1	RWE	Hand Painted - General	Unidentifiable	Portion: Body; Small fragment; unidentified green hand-painted motif; partially exfoliated
		470	1	RWE	Factory Slip - Banded	Hollowware	Portion: Body; Small fragment; partially exfoliated
		471	3	RWE	Transfer Print - General	Unidentifiable	Portion: Rim; Small fragments; unidentified blue transfer motif; partially exfoliated
		472	2	RWE	Transfer Print - General	Unidentifiable	Portion: Body; Small fragments; unidentified blue transfer motif; partially exfoliated
		473	2	RWE	Spongeware	Unidentifiable	Portion: Rim; Small fragments; partially exfoliated
		474	6	Red Earthenware - Coarse	Glazed	Hollowware	Portion: Body; Small fragments; partially exfoliated
		475	6	Red Earthenware - Coarse	Undecorated	Hollowware	Portion: Body; Small fragments; partially exfoliated
<i>Ploughzone Sub-Total: 70</i>							
<i>Unit Sub-Total: 70</i>							

Stage 3 Ceramic Inventory
The Coulson Site (AhGx-691)

Context
Stratum

Cat#	Qty	Ware	Motif	Form	Comments
Unit 505N-207E					
Ploughzone					
480	3	RWE	Undecorated	Saucer	Portion: Rim; Small fragments; partially exfoliated
481	3	Unidentifiable	Undecorated	Unidentifiable	Portion: Body; Small fragments; partially exfoliated
482	2	Unidentifiable	Undecorated	Unidentifiable	Portion: Body; Small fragments; completely exfoliated
483	5	Ironstone	Undecorated	Unidentifiable	Portion: Body; Small fragments; partially exfoliated
484	2	RWE	Undecorated	Unidentifiable	Portion: Base; Small fragments; partially exfoliated
485	38	RWE	Undecorated	Unidentifiable	Portion: Body; Small fragments; partially exfoliated
486	2	RWE	Edgeware - General	Flatware	Portion: Body; Small fragments; partially exfoliated
487	1	RWE	Edgeware - Evenly Scalloped	Flatware	Portion: Rim; Small fragment; red edge
488	1	RWE	Spongeware	Unidentifiable	Portion: Rim; Small fragment; partially exfoliated
489	7	RWE	Spongeware	Unidentifiable	Portion: Body; Small fragments; partially exfoliated
490	1	RWE	Hand Painted - Monochrome Blue	Unidentifiable	Portion: Body; Small fragment; blue hand-painted band; partially exfoliated
491	5	RWE	Hand Painted - Late Palette	Unidentifiable	Portion: Body; Small fragments; blue; green and black hand-painted floral motif; partially exfoliated
492	2	RWE	Hand Painted - Late Palette	Teacup	Portion: Rim; Small fragments; red hand-painted bands on interior and exterior; partially exfoliated; likely mends with cat. 395
493	1	RWE	Transfer Print - Willow Pattern	Unidentifiable	Portion: Rim; Small fragment; partially exfoliated
494	1	RWE	Transfer Print - General	Unidentifiable	Portion: Rim; Small fragment; unidentified blue transfer motif; partially exfoliated
495	2	RWE	Transfer Print - General	Unidentifiable	Portion: Body; Small fragments; heavily exfoliated
496	2	RWE	Factory Slip - General	Hollowware	Portion: Body; small fragments; unidentified blue; brown and yellow factory motif; partially exfoliated
497	3	Red Earthenware - Coarse	Glazed	Hollowware	Portion: Body; small fragments; partially exfoliated
498	1	Red Earthenware - Coarse	Glazed	Hollowware	Portion: Body; small fragment; partially exfoliated
499	8	Red Earthenware - Coarse	Undecorated	Unidentifiable	Portion: Body; small fragments; partially exfoliated
500	2	Yellow Ware	Undecorated	Hollowware	Portion: Body; small fragments; partially exfoliated

Ploughzone Sub-Total: 92

Stage 3 Ceramic Inventory
The Coulson Site (AhGx-691)

Context
Stratum

Cat#	Qty	Ware	Motif	Form	Comments
<i>Unit Sub-Total: 92</i>					
Unit 505N-210E					
Ploughzone					
505	2	Unidentifiable	Undecorated	Unidentifiable	Portion: Body; Small fragments; completely exfoliated
506	6	RWE	Undecorated	Unidentifiable	Portion: Base; Small fragments; partially exfoliated
507	2	RWE	Factory Slip - Banded	Hollowware	Portion: Body; Small fragments; blue and green factory bands; partially exfoliated
508	22	RWE	Undecorated	Unidentifiable	Portion: Body; Small fragments; partially exfoliated
509	1	RWE	Undecorated	Unidentifiable	Portion: Rim; Small fragment; partially exfoliated
510	1	RWE	Spongeware	Saucer	Portion: Rim; Small fragment; blue sponge motif on interior; partially exfoliated
511	1	RWE	Spongeware	Unidentifiable	Portion: Rim; Small fragment; blue sponge motif on interior; partially exfoliated
512	12	RWE	Undecorated	Unidentifiable	Portion: Body; Small fragments; partially exfoliated
513	1	RWE	Edgeware - General	Flatware	Portion: Body; Small fragment; partially exfoliated
514	2	RWE	Hand Painted - Monochrome Blue	Hollowware	Portion: Body; Small fragments; blue hand-painted floral motif on exterior; partially exfoliated
515	2	RWE	Hand Painted - Late Palette	Hollowware	Portion: Body; Small fragments; green; red; black and blue hand-painted floral motif on exterior; partially exfoliated
516	7	RWE	Transfer Print - General	Unidentifiable	Portion: Rim; Small fragments; unidentified blue transfer motif; partially exfoliated
517	2	Red Earthenware - Coarse	Glazed	Hollowware	Portion: Body; Small fragments; partially exfoliated
518	1	Red Earthenware - Coarse	Undecorated	Hollowware	Portion: Body; Small fragment; completely exfoliated
<i>Ploughzone Sub-Total: 62</i>					
<i>Unit Sub-Total: 62</i>					
Unit 505N-212E					
Ploughzone					
520	2	Unidentifiable	Undecorated	Unidentifiable	Portion: Body; Small fragments; completely exfoliated
521	1	RWE	Undecorated	Unidentifiable	Portion: Base; Small fragment; partially exfoliated
522	1	Ironstone	Undecorated	Unidentifiable	Portion: Rim; Small fragment; partially exfoliated
523	4	Ironstone	Undecorated	Unidentifiable	Portion: Body; Small fragments; partially exfoliated
524	20	RWE	Undecorated	Unidentifiable	Portion: Body; Small fragments; partially exfoliated

Stage 3 Ceramic Inventory
The Coulson Site (AhGx-691)

Context
Stratum

Cat#	Qty	Ware	Motif	Form	Comments
525	1	RWE	Spongeware	Unidentifiable	Portion: Body; Small fragment; partially exfoliated
526	5	RWE	Spongeware	Unidentifiable	Portion: Body; Small fragments; partially exfoliated
527	1	RWE	Spongeware	Saucer	Portion: Rim; Small fragment; blue sponge motif on interior; partially exfoliated
528	1	RWE	Transfer Print - General	Unidentifiable	Portion: Rim; Small fragment; unidentified blue transfer motif; partially exfoliated
529	1	RWE	Edgeware - Evenly Scalloped	Flatware	Portion: Rim; Small fragment; partially exfoliated
530	4	RWE	Hand Painted - Monochrome Blue	Unidentifiable	Portion: Body; Small fragments; unidentified blue hand-painted motif; partially exfoliated
531	1	RWE	Hand Painted - Late Palette	Unidentifiable	Portion: Body; Small fragment; black and green hand-painted floral motif; partially exfoliated
532	1	Red Earthenware - Coarse	Glazed	Hollowware	Portion: Body; Small fragment; partially exfoliated
<i>Ploughzone Sub-Total: 43</i>					
<i>Unit Sub-Total: 43</i>					
Unit 505N-215E					
Ploughzone					
535	1	RWE	Undecorated	Unidentifiable	Portion: Base; Small fragment; partially exfoliated
536	1	Ironstone	Undecorated	Unidentifiable	Portion: Base; Small fragment; partially exfoliated
537	1	RWE	Undecorated	Unidentifiable	Portion: Rim; Small fragment; partially exfoliated
538	19	RWE	Undecorated	Unidentifiable	Portion: Body; Small fragments; partially exfoliated
539	1	RWE	Spongeware	Unidentifiable	Portion: Rim; Small fragment; partially exfoliated
540	8	RWE	Spongeware	Unidentifiable	Portion: Body; Small fragments; partially exfoliated
541	1	RWE	Hand Painted - Late Palette	Unidentifiable	Portion: Rim; Small fragment; red hand-painted band; partially exfoliated
542	2	RWE	Hand Painted - Late Palette	Unidentifiable	Portion: Body; Small fragments; red and black hand-painted band and floral motif; partially exfoliated
543	1	RWE	Factory Slip - General	Hollowware	Portion: Rim; Small fragment; unidentified green and blue factory motif; partially exfoliated
544	1	Red Earthenware - Coarse	Glazed	Hollowware	Portion: Body; Small fragment; partially exfoliated
545	1	Red Earthenware - Coarse	Undecorated	Hollowware	Portion: Body; Small fragment; partially exfoliated

Ploughzone Sub-Total: 37

Stage 3 Ceramic Inventory
The Coulson Site (AhGx-691)

Context		Cat#	Qty	Ware	Motif	Form	Comments
Stratum							
		<i>Unit Sub-Total: 37</i>					
		Unit 505N-220E					
		Ploughzone					
	550	9	RWE	Undecorated	Unidentifiable	Portion: Body; Small fragments; partially exfoliated	
	551	2	RWE	Spongeware	Unidentifiable	Portion: Body; Small fragments; partially exfoliated	
	552	1	RWE	Edgeware - Straight	Flatware	Portion: Rim; Small fragment; partially exfoliated	
	553	1	RWE	Transfer Print - General	Hollowware	Portion: Body; Small fragment; unidentified blue transfer motif on exterior; partially exfoliated	
	554	2	Red Earthenware - Coarse	Undecorated	Hollowware	Portion: Body; Small fragments; partially exfoliated	
		<i>Ploughzone Sub-Total: 15</i>					
		<i>Unit Sub-Total: 15</i>					
		Unit 507N-205E					
		Ploughzone					
	560	3	Unidentifiable	Undecorated	Unidentifiable	Portion: Body; Small fragments; partially exfoliated	
	561	1	Ironstone	Undecorated	Unidentifiable	Portion: Rim; Small fragment; partially exfoliated	
	562	13	RWE	Undecorated	Unidentifiable	Portion: Body; Small fragments; partially exfoliated	
	563	1	RWE	Hand Painted - Late Palette	Unidentifiable	Portion: Body; Small fragment; green and black hand-painted floral motif; partially exfoliated	
	564	3	RWE	Spongeware	Unidentifiable	Portion: Body; Small fragments; partially exfoliated	
	565	3	RWE	Spongeware	Unidentifiable	Portion: Rim; Small fragments; partially exfoliated	
	566	2	RWE	Hand Painted - General	Unidentifiable	Portion: Rim; Small fragments; red and blue hand-painted bands; partially exfoliated	
	567	1	RWE	Factory Slip - Banded	Hollowware	Portion: Body; Small fragment; brown and yellow factory bands; partially exfoliated	
	568	3	Yellow Ware	Undecorated	Hollowware	Portion: Body; Small fragments; partially exfoliated	
	569	1	Red Earthenware - Coarse	Undecorated	Hollowware	Portion: Body; Small fragment; completely exfoliated	
		<i>Ploughzone Sub-Total: 31</i>					
		<i>Unit Sub-Total: 31</i>					

Stage 3 Ceramic Inventory
The Coulson Site (AhGx-691)

Context		Cat#	Qty	Ware	Motif	Form	Comments
Stratum							
Unit 507N-210E							
Ploughzone							
	575	22	RWE	Undecorated	Unidentifiable	Portion: Body; Small fragments; partially exfoliated	
	576	6	RWE	Spongeware	Unidentifiable	Portion: Body; Small fragments; partially exfoliated	
	577	1	RWE	Transfer Print - General	Unidentifiable	Portion: Rim; Small fragment; unidentified blue transfer motif; heavily exfoliated	
	578	1	RWE	Hand Painted - Late Palette	Unidentifiable	Portion: Rim; Small fragment; red hand-painted band; partially exfoliated	
	579	1	RWE	Hand Painted - Late Palette	Unidentifiable	Portion: Body; Small fragment; red; green and black hand-painted floral motif on interior	
	580	1	RWE	Transfer Print - General	Unidentifiable	Portion: Body; Small fragment; blue landscape transfer motif; partially exfoliated	
	581	2	RWE	Hand Painted - Monochrome Blue	Unidentifiable	Portion: Body; Small fragments; blue hand-painted band and floral motif; partially exfoliated	
	582	2	RWE	Edgeware - Straight	Flatware	Portion: Rim; Small fragments; partially exfoliated	
	583	1	RWE	Factory Slip - Banded	Hollowware	Portion: Body; Small fragment; green and brown factory bands; partially exfoliated	
	584	1	Yellow Ware	Undecorated	Hollowware	Portion: Body; Small fragment; partially exfoliated	
	585	1	Yellow Ware	Undecorated	Hollowware	Portion: Body; Small fragment; completely exfoliated	
	586	2	Red Earthenware - Coarse	Glazed	Hollowware	Portion: Body; Small fragments; partially exfoliated	
	587	4	Red Earthenware - Coarse	Undecorated	Hollowware	Portion: Body; Small fragments; partially exfoliated	
<i>Ploughzone Sub-Total: 45</i>							
<i>Unit Sub-Total: 45</i>							
Unit 510N-165E							
Ploughzone							
	590	1	RWE	Undecorated	Unidentifiable	Portion: Base; Small fragment; black transfer maker's mark: "EMENTSON"; bird wing with leafy garland; partially exfoliated	
<i>Ploughzone Sub-Total: 1</i>							
<i>Unit Sub-Total: 1</i>							
Unit 510N-175E							
Ploughzone							
	595	1	RWE	Factory Slip - General	Hollowware	Portion: Body; Small fragment; unidentified brown factory motif; heavily exfoliated	

Stage 3 Ceramic Inventory
The Coulson Site (AhGx-691)

Context		Stratum		Cat#	Qty	Ware	Motif	Form	Comments
		596	1	RWE	Undecorated	Unidentifiable	Portion: Body; Small fragment; partially exfoliated		
		<i>Ploughzone Sub-Total: 2</i>							
		<i>Unit Sub-Total: 2</i>							
		Unit 510N-180E							
		Ploughzone							
		600	4	RWE	Undecorated	Unidentifiable	Portion: Body; Small fragments; partially exfoliated		
		601	3	Red Earthenware - Coarse	Glazed	Hollowware	Portion: Body; Small fragments; partially exfoliated		
		<i>Ploughzone Sub-Total: 7</i>							
		<i>Unit Sub-Total: 7</i>							
		Unit 510N-190E							
		Ploughzone							
		605	4	RWE	Undecorated	Unidentifiable	Portion: Body; Small fragments; partially exfoliated		
		606	1	RWE	Undecorated	Unidentifiable	Portion: Base; Small fragment; partially exfoliated		
		607	1	RWE	Hand Painted - Monochrome Blue	Unidentifiable	Portion: Body; Small fragment; unidentified blue hand-painted motif; partially exfoliated		
		608	3	RWE	Spongeware	Unidentifiable	Portion: Body; Small fragments; partially exfoliated		
		<i>Ploughzone Sub-Total: 9</i>							
		<i>Unit Sub-Total: 9</i>							
		Unit 510N-200E							
		Ploughzone							
		610	2	RWE	Undecorated	Unidentifiable	Portion: Base; Small fragments; partially exfoliated		
		611	8	RWE	Undecorated	Unidentifiable	Portion: Body; Small fragments; partially exfoliated		
		612	3	Ironstone	Undecorated	Unidentifiable	Portion: Body; Small fragments; partially exfoliated		
		613	2	RWE	Transfer Print - General	Unidentifiable	Portion: Body; Small fragments; blue floral transfer motif; partially exfoliated		
		614	2	RWE	Spongeware	Unidentifiable	Portion: Body; Small fragments; partially exfoliated		
		615	1	RWE	Edgeware - Straight	Flatware	Portion: Rim; Small fragment; partially exfoliated		
		616	1	RWE	Spongeware	Unidentifiable	Portion: Rim; Small fragment		

Stage 3 Ceramic Inventory
The Coulson Site (AhGx-691)

Context

Stratum

Cat#	Qty	Ware	Motif	Form	Comments
617	1	Unidentifiable	Hand Painted - Late Palette	Unidentifiable	Portion: Rim; Small fragment; red hand-painted motif; partially exfoliated
618	3	RWE	Hand Painted - Late Palette	Unidentifiable	Portion: Body; Small fragments; blue; green and brown hand-painted floral motif; partially exfoliated
619	2	Red Earthenware - Coarse	Glazed	Hollowware	Portion: Body; Small fragments; partially exfoliated
620	5	Red Earthenware - Coarse	Undecorated	Unidentifiable	Portion: Body; Small fragments; partially exfoliated

Ploughzone Sub-Total: 30

Unit Sub-Total: 30

Unit 510N-205E

Ploughzone

625	2	RWE	Undecorated	Unidentifiable	Portion: Base; Small fragments; partially exfoliated
626	1	RWE	Undecorated	Unidentifiable	Portion: Rim; Small fragment; partially exfoliated
627	5	Ironstone	Undecorated	Unidentifiable	Portion: Body; Small fragments; partially exfoliated
628	2	RWE	Undecorated	Unidentifiable	Portion: Body; Small fragments; partially exfoliated
629	3	RWE	Spongeware	Unidentifiable	Portion: Body; Small fragments; partially exfoliated
630	1	RWE	Transfer Print - General	Unidentifiable	Portion: Rim; Small fragment; unidentified blue transfer motif; heavily exfoliated
631	1	Unidentifiable	Undecorated	Unidentifiable	Portion: Body; Small fragment; heavily exfoliated
632	3	Yellow Ware	Undecorated	Hollowware	Portion: Body; Small fragments; partially exfoliated
633	5	Red Earthenware - Coarse	Undecorated	Unidentifiable	Portion: Body; Small fragments; partially exfoliated

Ploughzone Sub-Total: 23

Unit Sub-Total: 23

Unit 510N-210E

Ploughzone

635	3	RWE	Undecorated	Unidentifiable	Portion: Base; Small fragments; wedged footring; partially exfoliated
636	10	RWE	Undecorated	Unidentifiable	Portion: Body; Small fragments; partially exfoliated
637	1	RWE	Hand Painted - Late Palette	Hollowware	Portion: Base; Small fragment; black hand-painted motif on interior (band); wedged footring; partially exfoliated
638	1	RWE	Hand Painted - Late Palette	Unidentifiable	Portion: Body; Small fragment; green hand-painted floral motif; partially exfoliated

Stage 3 Ceramic Inventory
The Coulson Site (AhGx-691)

Context		Stratum		Cat#	Qty	Ware	Motif	Form	Comments
		639	2	RWE	Transfer Print - General	Unidentifiable	Portion: Rim; Small fragments; unidentified blue transfer motif; partially exfoliated		
		640	1	RWE	Transfer Print - General	Unidentifiable	Portion: Body; Small fragment; blue floral transfer motif; partially exfoliated		
		641	6	RWE	Spongeware	Unidentifiable	Portion: Body; Small fragments; partially exfoliated		
		642	2	RWE	Edgeware - Straight	Flatware	Portion: Rim; Small fragments; partially exfoliated		
		643	1	RWE	Spongeware	Teacup	Portion: Rim; Small fragment; blue hand-painted band with sponge motif on exterior		
		<i>Ploughzone Sub-Total: 27</i>							
		<i>Unit Sub-Total: 27</i>							
		Unit 510N-215E							
		Ploughzone							
		645	4	RWE	Undecorated	Unidentifiable	Portion: Body; Small fragments; partially exfoliated		
		646	3	RWE	Transfer Print - General	Unidentifiable	Portion: Body; Small fragments; unidentified blue transfer motif; partially exfoliated		
		647	1	RWE	Edgeware - Straight and Moulded	Flatware	Portion: Rim; Small fragment; partially exfoliated		
		648	2	RWE	Spongeware	Unidentifiable	Portion: Body; Small fragments; partially exfoliated		
		649	2	Red Earthenware - Coarse	Undecorated	Hollowware	Portion: Body; Small fragments; partially exfoliated		
		<i>Ploughzone Sub-Total: 12</i>							
		<i>Unit Sub-Total: 12</i>							
		Unit 510N-220E							
		Ploughzone							
		655	2	RWE	Undecorated	Unidentifiable	Portion: Body; Small fragments; partially exfoliated		
		656	1	RWE	Transfer Print - Willow Pattern	Hollowware	Portion: Body; Small fragment; blue willow transfer motif on exterior; partially exfoliated		
		657	1	RWE	Transfer Print - General	Unidentifiable	Portion: Rim; Small fragment; blue transfer band; heavily exfoliated		
		<i>Ploughzone Sub-Total: 4</i>							
		<i>Unit Sub-Total: 4</i>							

Stage 3 Ceramic Inventory
The Coulson Site (AhGx-691)

Context		Cat#	Qty	Ware	Motif	Form	Comments
Stratum							
Unit 510N-230E							
Ploughzone							
660	3	RWE	Undecorated	Unidentifiable	Portion: Body; Small fragments; partially exfoliated		
661	2	RWE	Spongeware	Unidentifiable	Portion: Body; Small fragments; partially exfoliated		
662	1	RWE	Spongeware	Unidentifiable	Portion: Rim; Small fragment; heavily exfoliated		
<i>Ploughzone Sub-Total: 6</i>							
<i>Unit Sub-Total: 6</i>							
Unit 515N-165E							
Ploughzone							
665	1	RWE	Undecorated	Unidentifiable	Portion: Base; Small fragment; partially exfoliated		
666	1	RWE	Undecorated	Unidentifiable	Portion: Body; Small fragment; partially exfoliated		
667	1	Red Earthenware - Refined	Jet Ware	Hollowware	Portion: Body; Small fragment; partially exfoliated		
<i>Ploughzone Sub-Total: 3</i>							
<i>Unit Sub-Total: 3</i>							
Unit 515N-200E							
Ploughzone							
670	3	Unidentifiable	Undecorated	Unidentifiable	Portion: Body; Small fragments; partially exfoliated		
671	10	RWE	Undecorated	Unidentifiable	Portion: Body; Small fragments; partially exfoliated		
<i>Ploughzone Sub-Total: 13</i>							
<i>Unit Sub-Total: 13</i>							
Unit 515N-205E							
Ploughzone							
675	3	RWE	Undecorated	Unidentifiable	Portion: Body; Small fragments; partially exfoliated		
676	1	RWE	Undecorated	Unidentifiable	Portion: Base; Small fragment; partially exfoliated		
677	1	RWE	Edgeware - Straight	Flatware	Portion: Rim; Small fragment; partially exfoliated		
678	2	RWE	Spongeware	Unidentifiable	Portion: Body; Small fragments; partially exfoliated		

Stage 3 Ceramic Inventory
The Coulson Site (AhGx-691)

Context						
Stratum						
Cat#	Qty	Ware	Motif	Form	Comments	
679	1	Unidentifiable	Factory Slip - Cable	Hollowware	Portion: Body; Small fragment; blue and brown cable motif; partially exfoliated	
<i>Ploughzone Sub-Total: 8</i>						
<i>Unit Sub-Total: 8</i>						
Unit 515N-210E						
Ploughzone						
685	2	RWE	Undecorated	Unidentifiable	Portion: Body; Small fragments; partially exfoliated	
686	1	Ironstone	Undecorated	Unidentifiable	Portion: Body; Small fragment; partially exfoliated	
687	2	RWE	Hand Painted - Monochrome Blue	Unidentifiable	Portion: Body; Small fragments; unidentified blue hand-painted motif; partially exfoliated	
<i>Ploughzone Sub-Total: 5</i>						
<i>Unit Sub-Total: 5</i>						
Unit 515N-215E						
Ploughzone						
690	1	RWE	Undecorated	Unidentifiable	Portion: Body; Small fragment; partially exfoliated	
691	1	Red Earthenware - Coarse	Undecorated	Hollowware	Portion: Body; Small fragment; completely exfoliated	
<i>Ploughzone Sub-Total: 2</i>						
<i>Unit Sub-Total: 2</i>						
Unit 515N-220E						
Ploughzone						
695	1	RWE	Spongeware	Unidentifiable	Portion: Rim; Small fragment; partially exfoliated	
<i>Ploughzone Sub-Total: 1</i>						
<i>Unit Sub-Total: 1</i>						
Unit 520N-150E						
Ploughzone						
700	1	RWE	Undecorated	Unidentifiable	Portion: Body; Small fragment; partially exfoliated	

Stage 3 Ceramic Inventory
The Coulson Site (AhGx-691)

Context		Cat#	Qty	Ware	Motif	Form	Comments
<i>Ploughzone Sub-Total: 1</i>							
<i>Unit Sub-Total: 1</i>							
Unit 520N-190E							
Ploughzone							
705	1	RWE	Spongeware	Unidentifiable	Portion: Body; Small fragment; partially exfoliated		
706	2	RWE	Glazed	Hollowware	Portion: Body; Small fragments; partially exfoliated		
<i>Ploughzone Sub-Total: 3</i>							
<i>Unit Sub-Total: 3</i>							
Unit 520N-200E							
Ploughzone							
710	2	RWE	Undecorated	Unidentifiable	Portion: Body; Small fragments; partially exfoliated		
711	1	Red Earthenware - Coarse	Glazed	Hollowware	Portion: Body; Small fragment; partially exfoliated		
<i>Ploughzone Sub-Total: 3</i>							
<i>Unit Sub-Total: 3</i>							
Unit 520N-210E							
Ploughzone							
715	2	RWE	Spongeware	Unidentifiable	Portion: Body; Small fragments; partially exfoliated		
716	1	RWE	Transfer Print - General	Unidentifiable	Portion: Body; Small fragment; unidentified blue transfer motif; partially exfoliated		
<i>Ploughzone Sub-Total: 3</i>							
<i>Unit Sub-Total: 3</i>							
Unit 520N-215E							
Ploughzone							
720	3	RWE	Undecorated	Unidentifiable	Portion: Body; Small fragments; partially exfoliated		
721	1	Ironstone	Undecorated	Unidentifiable	Portion: Body; Small fragments; heavily exfoliated		
722	1	RWE	Undecorated	Hollowware	Portion: Body; Small fragment; perforated holes; possibly a salt shaker; partially exfoliated		

Stage 3 Ceramic Inventory
The Coulson Site (AhGx-691)

Context		Stratum		Cat#	Qty	Ware	Motif	Form	Comments
		723	1	Red Earthenware - Coarse	Undecorated	Hollowware	Portion: Body; Small fragment; partially exfoliated		
<i>Ploughzone Sub-Total: 6</i>									
<i>Unit Sub-Total: 6</i>									
Unit 520N-220E									
Ploughzone									
		725	1	RWE	Spongeware	Unidentifiable	Portion: Body; Small fragment; partially exfoliated		
<i>Ploughzone Sub-Total: 1</i>									
<i>Unit Sub-Total: 1</i>									
Unit 524N-215E									
Ploughzone									
		730	2	RWE	Undecorated	Unidentifiable	Portion: Body; Small fragments; partially exfoliated		
<i>Ploughzone Sub-Total: 2</i>									
<i>Unit Sub-Total: 2</i>									
Unit 525N-205E									
Ploughzone									
		735	1	RWE	Undecorated	Unidentifiable	Portion: Body; Small fragment; partially exfoliated		
		736	1	RWE	Undecorated	Unidentifiable	Portion: Body; Small fragment; partially exfoliated		
<i>Ploughzone Sub-Total: 2</i>									
<i>Unit Sub-Total: 2</i>									
Unit 525N-210E									
Ploughzone									
		740	2	RWE	Undecorated	Unidentifiable	Portion: Body; Small fragments; partially exfoliated		
		741	1	RWE	Spongeware	Unidentifiable	Portion: Body; Small fragment; partially exfoliated		
		742	2	Red Earthenware - Coarse	Undecorated	Hollowware	Portion: Body; Small fragments; partially exfoliated		
<i>Ploughzone Sub-Total: 5</i>									

Stage 3 Ceramic Inventory
The Coulson Site (AhGx-691)

Context	Stratum	Cat#	Qty	Ware	Motif	Form	Comments
<i>Unit Sub-Total: 5</i>							
<hr/> Grand Total : 1560 artifacts <hr/>							

Stage 3 Non-Ceramic Inventory
The Coulson Site (AhGx-691)

Context						
Cat#	Qty	Type	Material	Comments		
Surface						
745	1	Container - Unidentifiable	Glass	thick fragment; opaque blue; rounded; Colour: Blue; Portion: Body		
746	1	Container - Liquor	Glass	Small fragment; horizontal mould seams; rounded; Colour: Amber; Portion: Base		
747	1	Container - Unidentifiable	Glass	Small fragment; rounded; Colour: Colourless; Portion: Body		
748	1	Container - Unidentifiable	Glass	Small fragment; rounded; Colour: Colourless; Portion: Body		
749	7	Container - Unidentifiable	Glass	Small fragments; paneled sides; Colour: Aqua; Portion: Body		
750	10	Window Glass	Glass	Small fragments; Colour: Aqua; Portion: Incomplete		
1185	1	Spoon - Table	Brass	Bent spoon; oval etch on handle; green oxidize; Portion: Complete		
<i>Sub-Total: 22</i>						
<i>Surface Sub-Total: 22</i>						
Unit 480N-170E						
Ploughzone						
755	1	Container - Unidentifiable	Glass	Small fragment; rounded; light amber colour; Colour: Amber; Portion: Body		
<i>Ploughzone Sub-Total: 1</i>						
<i>Unit Sub-Total: 1</i>						
Unit 480N-190E						
Ploughzone						
1005	1	Faunal - Mammal	Bone	Small fragment; Portion: Incomplete		
1190	1	Nail - Wire	Metal - Ferrous	Corroded; Portion: Complete		
<i>Ploughzone Sub-Total: 2</i>						
<i>Unit Sub-Total: 2</i>						
Unit 480N-200E						
Ploughzone						
1010	1	Faunal - Avian	Bone	Small fragment; Portion: Incomplete		
<i>Ploughzone Sub-Total: 1</i>						
<i>Unit Sub-Total: 1</i>						
Unit 480N-210E						
Ploughzone						
1015	1	Faunal - Mammal	Bone	Small fragment; Portion: Incomplete		

Stage 3 Non-Ceramic Inventory
The Coulson Site (AhGx-691)

Context			
Cat#	Qty	Type	Material Comments
1195	1	Wire	Metal - Ferrous Small fragment; corroded; Portion: Incomplete
<i>Ploughzone Sub-Total: 2</i>			
<i>Unit Sub-Total: 2</i>			
Unit 490N-170E			
Ploughzone			
1200	1	Nail - Machine Cut	Metal - Ferrous Portion: Incomplete
<i>Ploughzone Sub-Total: 1</i>			
<i>Unit Sub-Total: 1</i>			
Unit 490N-180E			
Ploughzone			
760	1	Window Glass	Glass Small fragment; Colour: Aqua; Portion: Incomplete
<i>Ploughzone Sub-Total: 1</i>			
<i>Unit Sub-Total: 1</i>			
Unit 490N-190E			
Ploughzone			
765	1	Window Glass	Glass Colour: Colourless; Portion: Incomplete
1020	6	Faunal - Avian	Bone Small fragments; Portion: Incomplete
1205	1	Nail - Wire	Metal - Ferrous Corroded; Portion: Incomplete
<i>Ploughzone Sub-Total: 8</i>			
<i>Unit Sub-Total: 8</i>			
Unit 490N-200E			
Ploughzone			
770	1	Window Glass	Glass Small fragment; Colour: Colourless; Portion: Incomplete
771	1	Container - Liquor	Glass Small fragment; rounded; Colour: Amber; Portion: Body
1025	3	Faunal - Mammal	Bone Small fragments; Portion: Incomplete
1210	2	Unidentified	Metal - Ferrous corroded metal fragment; square shaped; twisted at sides; Portion: Incomplete
<i>Ploughzone Sub-Total: 7</i>			
<i>Unit Sub-Total: 7</i>			

Stage 3 Non-Ceramic Inventory
The Coulson Site (AhGx-691)

Context		Cat#	Qty	Type	Material	Comments
Unit 490N-205E						
Ploughzone						
	775	1	Window Glass	Glass	Small fragment; Colour: Colourless; Portion: Incomplete	
	776	1	Container - Unidentifiable	Glass	Small fragment; rounded; Colour: Colourless; Portion: Body	
	1030	7	Faunal - Mammal	Bone	Small fragments; Portion: Incomplete	
	1031	7	Faunal - Amphibian	Bone	Small fragments; Portion: Incomplete	
	1215	1	Nail - Machine Cut	Metal - Ferrous	Corroded; Portion: Incomplete	
	1216	1	Unidentified	Metal - Ferrous	Corroded; flat;; Portion: Incomplete	
	<i>Ploughzone Sub-Total: 18</i>					
	<i>Unit Sub-Total: 18</i>					
Unit 490N-210E						
Ploughzone						
	780	2	Window Glass	Glass	Small fragments; Colour: Aqua; Portion: Incomplete	
	1035	1	Faunal - Avian	Bone	Small fragment; Portion: Incomplete	
	1220	1	Unidentified	Metal - Ferrous	Small fragment; corroded; flat; Portion: Incomplete	
	1221	1	Nail - Machine Cut	Metal - Ferrous	Corroded; Portion: Complete	
	1222	3	Nail - Indeterminate	Metal - Ferrous	Corroded; Portion: Incomplete	
	1223	1	Barbed Wire	Metal - Ferrous	Corroded; Portion: Incomplete	
	<i>Ploughzone Sub-Total: 9</i>					
	<i>Unit Sub-Total: 9</i>					
Unit 490N-230E						
Ploughzone						
	785	1	Window Glass	Glass	Small fragment; Colour: Aqua; Portion: Incomplete	
	<i>Ploughzone Sub-Total: 1</i>					
	<i>Unit Sub-Total: 1</i>					
Unit 495N-205E						
Ploughzone						
	790	1	Container - Unidentifiable	Glass	Small fragment; rounded; Colour: Colourless; Portion: Incomplete	
	1040	2	Faunal - Mammal	Bone	Small fragments; Portion: Incomplete	
	1041	1	Faunal - Avian	Bone	Small fragment; Portion: Incomplete	
	<i>Ploughzone Sub-Total: 4</i>					

Stage 3 Non-Ceramic Inventory
The Coulson Site (AhGx-691)

Context			
Cat#	Qty	Type	Material
<i>Unit Sub-Total: 4</i>			
Unit 495N-210E			
Ploughzone			
795	2	Container - Unidentifiable	Glass
965	1	Smoking Pipe	White Ball Clay
1045	10	Faunal - Mammal	Bone
1225	2	Nail - Indeterminate	Metal - Ferrous
<i>Ploughzone Sub-Total: 15</i>			
<i>Unit Sub-Total: 15</i>			
Unit 495N-215E			
Ploughzone			
800	1	Window Glass	Glass
801	1	Container - Liquor	Glass
1050	11	Faunal - Mammal	Bone
1051	2	Faunal - Avian	Bone
1230	2	Nail - Indeterminate	Metal - Ferrous
1231	1	Nail - Machine Cut	Metal - Ferrous
<i>Ploughzone Sub-Total: 18</i>			
<i>Unit Sub-Total: 18</i>			
Unit 495N-220E			
Ploughzone			
1055	1	Faunal - Mammal	Bone
<i>Ploughzone Sub-Total: 1</i>			
<i>Unit Sub-Total: 1</i>			
Unit 500N-160E			
Ploughzone			
1235	1	Nail - Machine Cut	Metal - Ferrous
<i>Ploughzone Sub-Total: 1</i>			
<i>Unit Sub-Total: 1</i>			
			Comments
			Small fragments; rounded; Colour: Colourless; Portion: Body
			small fragment; undecorated; Portion: Stem
			Small fragments; Portion: Incomplete
			Corroded; Portion: Incomplete
			Small fragment; Colour: Aqua; Portion: Incomplete
			Small fragment; rounded; Colour: Dark Olive Green; Portion: Body
			Small fragments; Portion: Incomplete
			Small fragments; Portion: Incomplete
			Corroded; Portion: Incomplete
			Corroded; Portion: Incomplete
			Small fragment; Portion: Incomplete
			Corroded; Portion: Incomplete

Stage 3 Non-Ceramic Inventory
The Coulson Site (AhGx-691)

Context		Cat#	Qty	Type	Material	Comments
Unit 500N-180E						
Ploughzone						
	805	1	Window Glass	Glass	Small fragment; Colour: Colourless; Portion: Incomplete	
	806	1	Container - Unidentifiable	Glass	Small fragment; rounded; Colour: Colourless; Portion: Finish	
	1060	4	Faunal - Avian	Bone	Small fragments; Portion: Incomplete	
	1240	1	Nail - Indeterminate	Metal - Ferrous	Corroded; Portion: Incomplete	
	<i>Ploughzone Sub-Total: 7</i>					
	<i>Unit Sub-Total: 7</i>					
Unit 500N-190E						
Ploughzone						
	810	1	Window Glass	Glass	Small fragment; Colour: Colourless; Portion: Incomplete	
	1065	4	Faunal - Avian	Bone	Small fragments; Portion: Incomplete	
	1066	10	Faunal - Mammal	Bone	Small fragments; Portion: Incomplete	
	<i>Ploughzone Sub-Total: 15</i>					
	<i>Unit Sub-Total: 15</i>					
Unit 500N-200E						
Ploughzone						
	815	3	Window Glass	Glass	Small fragments; Colour: Aqua; Portion: Incomplete	
	1070	3	Faunal - Mammal	Bone	Small fragments; Portion: Incomplete	
	1245	2	Nail - Indeterminate	Metal - Ferrous	Corroded; missing head; Portion: Incomplete	
	1246	1	Unidentified	Metal - Ferrous	Corroded; rounded band; possibly a handle; Portion: Incomplete	
	<i>Ploughzone Sub-Total: 9</i>					
	<i>Unit Sub-Total: 9</i>					
Unit 500N-205E						
Ploughzone						
	820	1	Window Glass	Glass	Small fragment; Colour: Aqua; Portion: Incomplete	
	821	1	Container - Unidentifiable	Glass	Small fragment; rounded; Colour: Colourless; Portion: Body	
	970	1	Smoking Pipe	White Ball Clay	small fragment; unidentified moulded motif; Portion: Bowl	
	1075	1	Faunal - Mammal	Bone	Small tooth fragment; Portion: Incomplete	
	1076	2	Faunal - Mammal	Bone	Small fragments; Portion: Incomplete	
	1077	1	Faunal - Mammal	Bone	Small fragment; Portion: Incomplete	

Stage 3 Non-Ceramic Inventory
The Coulson Site (AhGx-691)

Context			
Cat#	Qty	Type	Material
1250	1	Mouth Harp	Metal - Iron
1251	3	Unidentified	Metal - Ferrous
1252	2	Nail - Machine Cut	Metal - Ferrous
<i>Ploughzone Sub-Total: 13</i>			
<i>Unit Sub-Total: 13</i>			
Unit 500N-210E			
Ploughzone			
825	2	Window Glass	Glass
1080	6	Faunal - Avian	Bone
1255	1	Nail - Indeterminate	Metal - Ferrous
1256	1	Bolt	Metal - Ferrous
<i>Ploughzone Sub-Total: 10</i>			
<i>Unit Sub-Total: 10</i>			
Unit 500N-215E			
Ploughzone			
830	1	Container - Unidentifiable	Glass
1085	23	Faunal - Avian	Bone
1260	1	Screw	Metal - Ferrous
1261	2	Nail - Indeterminate	Metal - Ferrous
1262	1	Nail - Machine Cut	Metal - Ferrous
<i>Ploughzone Sub-Total: 28</i>			
<i>Unit Sub-Total: 28</i>			
Unit 500N-220E			
Ploughzone			
835	1	Window Glass	Glass
1265	1	Nail - Machine Cut	Metal - Ferrous
<i>Ploughzone Sub-Total: 2</i>			
<i>Unit Sub-Total: 2</i>			
Unit 502N-213E			
Ploughzone			
1090	7	Faunal - Avian	Bone

Stage 3 Non-Ceramic Inventory
The Coulson Site (AhGx-691)

Context		Cat#	Qty	Type	Material	Comments
		1270	2	Nail - Machine Cut	Metal - Ferrous	Corroded; Portion: Incomplete
		1271	1	Bolt	Metal - Ferrous	Corroded; missing shaft; Portion: Incomplete
		<i>Ploughzone Sub-Total: 10</i>				
		<i>Unit Sub-Total: 10</i>				
		Unit 503N-205E				
		Ploughzone				
		840	1	Window Glass	Glass	Small fragment; Colour: Colourless; Portion: Incomplete
		841	1	Container - Unidentifiable	Glass	Small fragment; paneled side; Colour: Colourless; Portion: Body
		975	1	Smoking Pipe	White Ball Clay	small fragment; undecorated; Portion: Bowl
		976	1	Gaming Piece	Plastic	plastic checkers game piece; black; Portion: Complete
		1095	3	Faunal - Mammal	Bone	Small fragments; Portion: Incomplete
		1096	4	Faunal - Mammal	Bone	Small fragments; Portion: Incomplete
		1275	1	Horse Shoe Nail	Metal - Ferrous	Corroded; Portion: Incomplete
		<i>Ploughzone Sub-Total: 12</i>				
		<i>Unit Sub-Total: 12</i>				
		Unit 503N-210E				
		Ploughzone				
		980	2	Smoking Pipe	White Ball Clay	small fragments; undecorated; Portion: Stem
		1100	1	Faunal - Mammal	Bone	Small fragment; Portion: Incomplete
		1101	4	Faunal - Avian	Bone	Small fragments; Portion: Incomplete
		1102	1	Faunal - Mammal	Bone	Small tooth fragment; Portion: Incomplete
		1103	3	Faunal - Mammal	Bone	Small fragments; Portion: Incomplete
		1280	1	Nail - Indeterminate	Metal - Ferrous	Corroded; Portion: Incomplete
		<i>Ploughzone Sub-Total: 12</i>				
		<i>Unit Sub-Total: 12</i>				
		Unit 505N-170E				
		Ploughzone				
		1285	1	Unidentified	Metal - Ferrous	Corroded; small fragment; flat; Portion: Incomplete
		1286	1	Nail - Machine Cut	Metal - Ferrous	Corroded; Portion: Incomplete
		1287	1	Nail - Indeterminate	Metal - Ferrous	Corroded; missing head; Portion: Incomplete
		<i>Ploughzone Sub-Total: 3</i>				
		<i>Unit Sub-Total: 3</i>				

Stage 3 Non-Ceramic Inventory
The Coulson Site (AhGx-691)

Context			Material	Comments
Cat#	Qty	Type		
Unit 505N-200E				
Ploughzone				
845	1	Window Glass	Glass	Small fragment; Colour: Aqua; Portion: Incomplete
846	1	Container - Unidentifiable	Glass	Small fragment; rounded; Colour: Colourless; Portion: Body
847	1	Container - Unidentifiable	Glass	Small fragment; rounded; Colour: Solarized; Portion: Body
1105	6	Faunal - Mammal	Bone	Small fragments; Portion: Incomplete
1290	2	Nail - Machine Cut	Metal - Ferrous	Corroded; Portion: Incomplete
1291	2	Nail - Indeterminate	Metal - Ferrous	Corroded; missing head; Portion: Incomplete
<i>Ploughzone Sub-Total: 13</i>				
<i>Unit Sub-Total: 13</i>				
Unit 505N-203E				
Ploughzone				
449	1	Unidentified	Parian Ware	Small fragment; rounded; Portion: Body
850	1	Window Glass	Glass	Small fragment; Colour: Aqua; Portion: Incomplete
851	1	Tumbler	Glass	Small fragment; rounded; Colour: Colourless; Portion: Rim
852	1	Container - Unidentifiable	Glass	Small fragment; rounded; Colour: Colourless; Portion: Base
985	1	Smoking Pipe	White Ball Clay	Small fragment; moulded ribs; Portion: Bowl
1111	1	Faunal - Avian	Bone	Small fragment; Portion: Incomplete
1295	1	Nail - Hand Wrought	Metal - Ferrous	Corroded; missing head; Portion: Incomplete
<i>Ploughzone Sub-Total: 7</i>				
<i>Unit Sub-Total: 7</i>				
Unit 505N-205E				
Ploughzone				
1115	4	Faunal - Mammal	Bone	Small fragment; Portion: Incomplete
1300	1	Nail - Indeterminate	Metal - Ferrous	Corroded; missing head; Portion: Incomplete
<i>Ploughzone Sub-Total: 5</i>				
<i>Unit Sub-Total: 5</i>				
Unit 505N-207E				
Ploughzone				
855	3	Container - Unidentifiable	Glass	Small fragments; rounded; Colour: Colourless; Portion: Body
856	1	Teaware	Glass	Small rim and handle fragment; Colour: Opaque White (milk glass); Portion: Rim

Stage 3 Non-Ceramic Inventory
The Coulson Site (AhGx-691)

Context		Cat#	Qty	Type	Material	Comments
		990	1	Smoking Pipe	White Ball Clay	small fragment; moulded ribs; Portion: Bowl
		991	1	Smoking Pipe	White Ball Clay	small fragment; undecorated; worn tip; Portion: Stem
		1120	7	Faunal - Avian	Bone	Small fragments; Portion: Incomplete
		1121	7	Faunal - Mammal	Bone	Small fragments; Portion: Incomplete
		1122	3	Faunal - Mammal	Bone	Small fragments; Portion: Incomplete
		1305	1	Nail - Indeterminate	Metal - Ferrous	Corroded; missing head; Portion: Incomplete
		1306	2	Nail - Machine Cut	Metal - Ferrous	Corroded; Portion: Incomplete
		1307	1	Nail - Indeterminate	Metal - Ferrous	Corroded; Portion: Incomplete
		<i>Ploughzone Sub-Total: 27</i>				
		<i>Unit Sub-Total: 27</i>				
		Unit 505N-210E				
		Ploughzone				
		860	1	Window Glass	Glass	Small fragment; Colour: Colourless; Portion: Incomplete
		1125	11	Faunal - Avian	Bone	Small fragments; Portion: Incomplete
		1126	1	Faunal - Mammal	Bone	Small fragment; Portion: Incomplete
		1310	3	Nail - Machine Cut	Metal - Ferrous	Corroded; Portion: Incomplete
		1311	1	Spike	Metal - Ferrous	Corroded; Portion: Incomplete
		<i>Ploughzone Sub-Total: 17</i>				
		<i>Unit Sub-Total: 17</i>				
		Unit 505N-212E				
		Ploughzone				
		865	1	Window Glass	Glass	Small fragment; Colour: Aqua; Portion: Incomplete
		866	1	Container - Unidentifiable	Glass	Small fragment; rounded; Colour: Colourless; Portion: Body
		1130	9	Faunal - Avian	Bone	Small fragments; Portion: Incomplete
		1315	2	Nail - Indeterminate	Metal - Ferrous	Corroded; missing head; Portion: Incomplete
		<i>Ploughzone Sub-Total: 13</i>				
		<i>Unit Sub-Total: 13</i>				
		Unit 505N-215E				
		Ploughzone				
		870	1	Window Glass	Glass	Small fragment; Colour: Aqua; Portion: Incomplete
		1135	7	Faunal - Avian	Bone	Small fragments; Portion: Incomplete
		1320	1	Nail - Indeterminate	Metal - Ferrous	Corroded; missing head; Portion: Incomplete

Stage 3 Non-Ceramic Inventory
The Coulson Site (AhGx-691)

Context	Cat#	Qty	Type	Material	Comments
<i>Ploughzone Sub-Total: 9</i>					
<i>Unit Sub-Total: 9</i>					
Unit 505N-220E					
Ploughzone					
	1140	11	Faunal - Avian	Bone	Small fragments; Portion: Incomplete
	1141	15	Faunal - Mammal	Bone	Small fragments; Portion: Incomplete
	1325	1	Nail - Machine Cut	Metal - Ferrous	Corroded; Portion: Incomplete
<i>Ploughzone Sub-Total: 27</i>					
<i>Unit Sub-Total: 27</i>					
Unit 507N-205E					
Ploughzone					
	875	1	Container - Unidentifiable	Glass	Small fragment; Colour: Colourless; Portion: Body
<i>Ploughzone Sub-Total: 1</i>					
<i>Unit Sub-Total: 1</i>					
Unit 507N-210E					
Ploughzone					
	880	4	Window Glass	Glass	Small fragments; Colour: Aqua; Portion: Incomplete
	1145	9	Faunal - Avian	Bone	Small fragments; Portion: Incomplete
	1330	2	Nail - Indeterminate	Metal - Ferrous	Corroded; Portion: Incomplete
<i>Ploughzone Sub-Total: 15</i>					
<i>Unit Sub-Total: 15</i>					
Unit 510N-175E					
Ploughzone					
	995	2	Smoking Pipe	White Ball Clay	small fragments; undecorated; Portion: Stem
<i>Ploughzone Sub-Total: 2</i>					
<i>Unit Sub-Total: 2</i>					
Unit 510N-180E					
Ploughzone					
	885	1	Window Glass	Glass	Small fragment; Colour: Aqua; Portion: Incomplete

Stage 3 Non-Ceramic Inventory
The Coulson Site (AhGx-691)

Context			
Cat#	Qty	Type	Material
<i>Ploughzone Sub-Total: 1</i>			
<i>Unit Sub-Total: 1</i>			
Unit 510N-190E			
Ploughzone			
890	1	Container - Unidentifiable	Glass
1150	1	Faunal - Mammal	Bone
<i>Ploughzone Sub-Total: 2</i>			
<i>Unit Sub-Total: 2</i>			
Unit 510N-200E			
Ploughzone			
895	1	Container - Liquor	Glass
896	2	Window Glass	Glass
1155	6	Faunal - Mammal	Bone
1335	1	Nail - Indeterminate	Metal - Ferrous
<i>Ploughzone Sub-Total: 10</i>			
<i>Unit Sub-Total: 10</i>			
Unit 510N-205E			
Ploughzone			
900	2	Window Glass	Glass
901	2	Window Glass	Glass
1340	2	Nail - Indeterminate	Metal - Ferrous
<i>Ploughzone Sub-Total: 6</i>			
<i>Unit Sub-Total: 6</i>			
Unit 510N-210E			
Ploughzone			
905	5	Window Glass	Glass
1160	3	Faunal - Mammal	Bone
1161	7	Faunal - Mammal	Bone
1345	2	Unidentified	Metal - Ferrous
1346	1	Nail - Machine Cut	Metal - Ferrous

Stage 3 Non-Ceramic Inventory
The Coulson Site (AhGx-691)

Context		Cat#	Qty	Type	Material	Comments
<i>Ploughzone Sub-Total: 18</i>						
<i>Unit Sub-Total: 18</i>						
Unit 510N-215E						
Ploughzone						
650	1	Shell			Shell	Small fragment; thermally altered; Portion: Incomplete
910	2	Container - Unidentifiable			Glass	Small fragments; rounded; Colour: Colourless; Portion: Incomplete
1165	1	Faunal - Mammal			Bone	Small fragment; Portion: Incomplete
1350	1	Wire			Metal - Ferrous	Corroded; Portion: Incomplete
1351	1	Nail - Indeterminate			Metal - Ferrous	Corroded; Portion: Incomplete
<i>Ploughzone Sub-Total: 6</i>						
<i>Unit Sub-Total: 6</i>						
Unit 510N-220E						
Ploughzone						
915	1	Window Glass			Glass	Small fragment; Colour: Aqua; Portion: Incomplete
<i>Ploughzone Sub-Total: 1</i>						
<i>Unit Sub-Total: 1</i>						
Unit 510N-230E						
Ploughzone						
1355	2	Nail - Machine Cut			Metal - Ferrous	Corroded; Portion: Incomplete
<i>Ploughzone Sub-Total: 2</i>						
<i>Unit Sub-Total: 2</i>						
Unit 515N-200E						
Ploughzone						
920	2	Window Glass			Glass	Small fragments; Colour: Colourless; Portion: Incomplete
1000	1	Smoking Pipe			White Ball Clay	small fragment; undecorated; Portion: Bowl
1360	2	Nail - Indeterminate			Metal - Ferrous	Corroded; missing head; Portion: Incomplete
1361	1	Unidentified			Metal - Ferrous	Corroded; small; folded at sides; rounded; Portion: Incomplete
<i>Ploughzone Sub-Total: 6</i>						
<i>Unit Sub-Total: 6</i>						

Stage 3 Non-Ceramic Inventory
The Coulson Site (AhGx-691)

Context		Cat#	Qty	Type	Material	Comments
Unit 515N-205E						
Ploughzone						
	1170	1	Faunal - Avian	Bone	Small fragment; Portion: Incomplete	
	1365	1	Nail - Machine Cut	Metal - Ferrous	Corroded; Portion: Incomplete	
<i>Ploughzone Sub-Total: 2</i>						
<i>Unit Sub-Total: 2</i>						
Unit 515N-210E						
Ploughzone						
	1370	1	Nail - Indeterminate	Metal - Ferrous	Corroded; missing head; Portion: Incomplete	
<i>Ploughzone Sub-Total: 1</i>						
<i>Unit Sub-Total: 1</i>						
Unit 515N-220E						
Ploughzone						
	925	2	Container - Unidentifiable	Glass	Small fragments; moulded vertical bands; rounded; Colour: Colourless; Portion: Body	
<i>Ploughzone Sub-Total: 2</i>						
<i>Unit Sub-Total: 2</i>						
Unit 520N-190E						
Ploughzone						
	930	1	Container - Unidentifiable	Glass	Small fragment; paneled side; stippled surface; Colour: Colourless; Portion: Body	
<i>Ploughzone Sub-Total: 1</i>						
<i>Unit Sub-Total: 1</i>						
Unit 520N-200E						
Ploughzone						
	935	1	Window Glass	Glass	Small fragment; Colour: Aqua; Portion: Body	
	936	1	Container - Unidentifiable	Glass	Small fragment; rounded; Colour: Colourless; Portion: Body	
<i>Ploughzone Sub-Total: 2</i>						
<i>Unit Sub-Total: 2</i>						

Stage 3 Non-Ceramic Inventory
The Coulson Site (AhGx-691)

Context			
Cat#	Qty	Type	Comments
Unit 520N-205E			
Ploughzone			
940	4	Window Glass	Glass
941	1	Container - Unidentifiable	Glass
1175	1	Faunal - Mammal	Bone
1375	1	Nail - Machine Cut	Metal - Ferrous
<i>Ploughzone Sub-Total: 7</i>			
<i>Unit Sub-Total: 7</i>			
Unit 520N-210E			
Ploughzone			
1380	1	Nail - Machine Cut	Metal - Ferrous
<i>Ploughzone Sub-Total: 1</i>			
<i>Unit Sub-Total: 1</i>			
Unit 520N-215E			
Ploughzone			
945	1	Window Glass	Glass
1385	1	Nail - Indeterminate	Metal - Ferrous
<i>Ploughzone Sub-Total: 2</i>			
<i>Unit Sub-Total: 2</i>			
Unit 520N-220E			
Ploughzone			
950	1	Container - Unidentifiable	Glass
<i>Ploughzone Sub-Total: 1</i>			
<i>Unit Sub-Total: 1</i>			
Unit 525N-205E			
Ploughzone			
955	2	Window Glass	Glass
956	1	Container - Unidentifiable	Glass
<i>Ploughzone Sub-Total: 3</i>			

Stage 3 Non-Ceramic Inventory
The Coulson Site (AhGx-691)

Context			
Cat#	Qty	Type	Material
<i>Unit Sub-Total: 3</i>			
Unit 525N-210E			
Ploughzone			
960	2	Window Glass	Glass
1180	1	Faunal - Mammal	Bone
1390	1	Nail - Indeterminate	Metal - Ferrous
<i>Ploughzone Sub-Total: 4</i>			
<i>Unit Sub-Total: 4</i>			
Grand Total : 447 artifacts			

APPENDIX B: AhGx-693 Artifact Inventory



Site Name	Cat #	Sub-Operation	Nothing-Easting	Qty	Type	Material	Thermal Alt.	# Retouch/U Alt. tilized	L	W	T	Comments
AhGx-693	L11	Surface		1	FLF - Flake fragment	Onondaga	Yes	1				
AhGx-693	L12	Surface		1	FLF - Flake fragment	Onondaga						
AhGx-693	L13	Surface		1	FLF - Flake fragment	Onondaga						
AhGx-693	L14	Surface		1	FLF - Flake fragment	Onondaga						
AhGx-693	L15	Surface		1	SH - Shatter	Bois blanc						
AhGx-693	L16	Surface		1	FLF - Flake fragment	Onondaga						
AhGx-693	L17	Surface		1	SH - Shatter	Lockport						
AhGx-693	L18	Surface		1	IB - Biface	Bois blanc			54	30	19	middle stage biface, tabular cortex present
AhGx-693	L19	Surface		1	SH - Shatter	Lockport						
AhGx-693	L20	Surface		1	PT - Primary thinning flake	Onondaga		Yes				ventral, distal retouch to poss. corner graver tip
AhGx-693	L21	Surface		1	SK - Secondary knapping flake	Onondaga						
AhGx-693	L22	Surface		1	FLF - Flake fragment	Lockport						
AhGx-693	L23	Surface		1	FLF - Flake fragment	Onondaga						
AhGx-693	L24	Surface		1	SK - Secondary knapping flake	Onondaga						
AhGx-693	L25	Surface		1	SK - Secondary knapping flake	Onondaga						
AhGx-693	L26	Surface		1	FLF - Flake fragment	Onondaga						
AhGx-693	L27	Surface		1	FLF - Flake fragment	Onondaga						
AhGx-693	L28	Surface		1	SK - Secondary knapping flake	Lockport						bending initiation flake wfaceted striking platform
AhGx-693	L29	Surface		1	FLF - Flake fragment	Bois blanc						
AhGx-693	L30	Surface		1	SK - Secondary knapping flake	Bois blanc						
AhGx-693	L31	Surface		1	SK - Secondary knapping flake	Bois blanc						
AhGx-693	L32	Surface		1	FLF - Flake fragment	Lockport						
AhGx-693	L33	Surface		1	SH - Shatter	Bois blanc						
AhGx-693	L34	Surface		1	PPF - Projectile point fragment	Onondaga			36	21	5	thin, side-notched pt. w narrow blade; broken tip and straight base- resembles Early Woodland Meadowood pt. ; base w= 21mm, notch w=6, d=4mm

Site Name	Cat #	Sub-Operation	Northing-Easting	Qty	Type	Material	Thermal Alt.	# Retouch/Ult. Alt. utilized	L	W	T	Comments
AhGx-693	L35	Surface		1	FLf - Flake fragment	Onondaga		Yes				dorsal, lateral retouch; flake from a biface
AhGx-693	L36	Surface		1	FLf - Flake fragment	Onondaga						
AhGx-693	L37	Surface		1	B - Biface	Bois blanc			42	26	10	late stage, triangular biface w truncated basal corner; roughly plano-convex in cross-section
AhGx-693	L38	Surface		1	FLf - Flake fragment	Onondaga		Yes				poss. distal edge utiliz.
AhGx-693	L39	Surface		1	FLf - Flake fragment	Onondaga						
AhGx-693	L40	Surface		1	SK - Secondary knapping flake	Bois blanc						
AhGx-693	L41	One metre unit	490-150	1	FLf - Flake fragment	Lockport						
AhGx-693	L42	One metre unit	490-160	1	FLf - Flake fragment	Onondaga						
AhGx-693	L43	One metre unit	490-160	1	FLf - Flake fragment	Lockport						
AhGx-693	L44	One metre unit	490-170	1	PT - Primary thinning flake	Bois blanc		Yes				distal edge retouch
AhGx-693	L45	One metre unit	490-190	1	FLf - Flake fragment	Lockport						
AhGx-693	L46	One metre unit	490-190	1	FLf - Flake fragment	Onondaga						
AhGx-693	L47	One metre unit	500-140	1	SK - Secondary knapping flake	Onondaga						
AhGx-693	L48	One metre unit	500-160	1	SK - Secondary knapping flake	Bois blanc						
AhGx-693	L49	One metre unit	500-170	1	FLf - Flake fragment	Bois blanc						
AhGx-693	L50	One metre unit	500-180	1	FLf - Flake fragment	Onondaga						
AhGx-693	L51	One metre unit	500-180	1	FLf - Flake fragment	Bois blanc						
AhGx-693	L52	One metre unit	505-145	2	SK - Secondary knapping flake	Onondaga						
AhGx-693	L53	One metre unit	505-145	2	FLf - Flake fragment	Onondaga						
AhGx-693	L54	One metre unit	505-145	2	SK - Secondary knapping flake	Lockport						
AhGx-693	L55	One metre unit	505-145	1	SH - Shatter	Lockport						
AhGx-693	L56	One metre unit	505-155	2	SK - Secondary knapping flake	Lockport						
AhGx-693	L57	One metre unit	505-155	3	SK - Secondary knapping flake	Bois blanc						
AhGx-693	L58	One metre unit	505-155	1	SK - Secondary knapping flake	Onondaga						

Site Name	Cat #	Sub-Operation	Northing-Easting	Qty	Type	Material	Thermal Alt.	# Retouch/U Alt. tilized	L	W	T	Comments
AhGx-693	L85	One metre unit	510-170	2	SK - Secondary knapping flake	Bois blanc						
AhGx-693	L86	One metre unit	510-170	1	FLf - Flake fragment	Lockport						
AhGx-693	L87	One metre unit	510-170	1	FLf - Flake fragment	Onondaga						
AhGx-693	L88	One metre unit	510-170	1	FLf - Flake fragment	Onondaga		Yes				distal edge utiliz./ ret.
AhGx-693	L89	One metre unit	510-170	1	SH - Shatter	Onondaga						
AhGx-693	L90	One metre unit	510-175	2	FLf - Flake fragment	Lockport						
AhGx-693	L91	One metre unit	510-175	1	SH - Shatter	Onondaga		Yes				retouched along 2 margins
AhGx-693	L92	One metre unit	510-190	1	SK - Secondary knapping flake	Onondaga						
AhGx-693	L93	One metre unit	510-190	1	FLf - Flake fragment	Onondaga						
AhGx-693	L94	One metre unit	510-190	1	FLf - Flake fragment	Bois blanc						
AhGx-693	L95	One metre unit	515-160	1	SK - Secondary knapping flake	Lockport						
AhGx-693	L96	One metre unit	515-160	2	FLf - Flake fragment	Lockport	Yes	1				
AhGx-693	L97	One metre unit	515-160	1	FLf - Flake fragment	Onondaga	Yes	1				
AhGx-693	L98	One metre unit	515-160	1	CF - Core trimming flake	Onondaga						striking edge damage on 1 margin
AhGx-693	L99	One metre unit	515-165	1	SK - Secondary knapping flake	Onondaga						
AhGx-693	L100	One metre unit	515-165	5	FLf - Flake fragment	Onondaga						
AhGx-693	L101	One metre unit	515-165	1	SK - Secondary knapping flake	Bois blanc		Yes				ventral, lateral ret./ utiliz. and poss. distal edge utiliz.
AhGx-693	L102	One metre unit	515-165	1	SK - Secondary knapping flake	Lockport						
AhGx-693	L103	One metre unit	515-165	2	FLf - Flake fragment	Bois blanc						
AhGx-693	L104	One metre unit	515-170	1	SK - Secondary knapping flake	Onondaga						
AhGx-693	L105	One metre unit	520-150	1	FLf - Flake fragment	Bois blanc						
AhGx-693	L106	One metre unit	520-165	1	FLf - Flake fragment	Bois blanc						
AhGx-693	L107	One metre unit	520-180	1	SK - Secondary knapping flake	Bois blanc		Yes				dorsal, distal edge retouch and poss. lateral ret./utiliz.
AhGx-693	L108	One metre unit	520-180	1	SK - Secondary knapping flake	Onondaga						

Site Name	Cat #	Sub-Operation	Nothing-Easting	Qty	Type	Material	Thermal Alt.	# Alt. utilized	Retouch/U	L	W	T	Comments
AhGx-693	L109	One metre unit	520-180	1	SH - Shatter	Onondaga	Yes	1					step fracturing along 1 edge
AhGx-693	L110	One metre unit	520-190	1	SK - Secondary knapping flake	Onondaga							
AhGx-693	L111	One metre unit	520-190	1	SK - Secondary knapping flake	Bois blanc							
AhGx-693	L112	One metre unit	530-160	1	FLf - Flake fragment	Bois blanc							
AhGx-693	L113	One metre unit	530-170	1	SK - Secondary knapping flake	Onondaga		Yes					retouch on dorsal, distal margin
AhGx-693	L114	One metre unit	530-180	1	FLf - Flake fragment	Onondaga		Yes					distal margin utiliz./ ret.
AhGx-693	L115	One metre unit	540-170	1	SK - Secondary knapping flake	Lockport							

APPENDIX C: AhGx-694 Artifact Inventory



Site Name	Cat #	Sub-Operation	Nothing-Easting	Qty	Type	Material	Thermal Alt.	# Retouch/Alt. utilized	L	W	T	Comments
AhGx-694	L5	Surface		1	PP - Projectile point	Onondaga			37	26	6	compact, corner-notched/ stemmed pt. w broad blade- resembles Middle Woodland Snyders pt; collateral flaking on 1 side; base w=15mm.
AhGx-694	L6	One metre unit	464-179	1	SR - Secondary retouch flake	Kettle point						

APPENDIX D: AhGx-696 Artifact Inventory



Site Name	Cat #	Sub-Operation	Northing-Easting	Qty	Type	Material	Thermal Alt.	# Retouch/U Alt. tilized	L	W	T	Comments
AhGx-696	L10	Surface		1	SK - Secondary knapping flake	Lockport						
AhGx-696	L11	Surface		1	FLf - Flake fragment	Lockport						
AhGx-696	L12	Surface		1	FLf - Flake fragment	Onondaga						
AhGx-696	L13	Surface		1	FLf - Flake fragment	Onondaga	Yes	1				
AhGx-696	L14	Surface		1	SK - Secondary knapping flake	Lockport						
AhGx-696	L15	Surface		1	FLf - Flake fragment	Lockport						
AhGx-696	L16	Surface		1	FLf - Flake fragment	Bois blanc						
AhGx-696	L17	One metre unit	480-200	1	FLf - Flake fragment	Lockport		Yes				concave, distal edge retouch
AhGx-696	L18	One metre unit	490-200	2	FLf - Flake fragment	Lockport						
AhGx-696	L19	One metre unit	490-200	1	SR - Secondary retouch flake	Onondaga						
AhGx-696	L20	One metre unit	490-205	1	SK - Secondary knapping flake	Lockport						
AhGx-696	L21	One metre unit	490-205	1	CH - Chunk/Cobble	Onondaga						
AhGx-696	L22	One metre unit	495-210	2	SK - Secondary knapping flake	Lockport						
AhGx-696	L23	One metre unit	495-215	1	SR - Secondary retouch flake	Lockport						
AhGx-696	L24	One metre unit	495-215	1	SK - Secondary knapping flake	Onondaga		Yes				ventral, bi-ateral lateral concave areas of retouch
AhGx-696	L25	One metre unit	500-210	1	SK - Secondary knapping flake	Lockport						
AhGx-696	L26	One metre unit	500-210	2	FLf - Flake fragment	Lockport						
AhGx-696	L27	One metre unit	500-210	1	FLf - Flake fragment	Bois blanc						
AhGx-696	L28	One metre unit	500-210	1	FLf - Flake fragment	Onondaga						
AhGx-696	L29	One metre unit	500-215	1	SK - Secondary knapping flake	Bois blanc						
AhGx-696	L30	One metre unit	500-215	1	FLf - Flake fragment	Bois blanc						
AhGx-696	L31	One metre unit	500-215	2	FLf - Flake fragment	Lockport						
AhGx-696	L32	One metre unit	502-213	1	SK - Secondary knapping flake	Lockport						
AhGx-696	L33	One metre unit	502-213	1	FLf - Flake fragment	Lockport						
AhGx-696	L34	One metre unit	502-213	2	FLf - Flake fragment	Onondaga						
AhGx-696	L35	One metre unit	502-213	1	PPf - Projectile point fragment	Onondaga			18	12	5	tip frag. of prob. proj. pt. , broken by hinge fracture

Site Name	Cat #	Sub-Operation	Northing-Easting	Qty	Type	Material	Thermal Alt.	# Retouch/U Alt. tilized	L	W	T	Comments
AhGx-696	L36	One metre unit	503-210	1	SK - Secondary knapping flake	Lockport						
AhGx-696	L37	One metre unit	503-210	3	FLf - Flake fragment	Lockport						
AhGx-696	L38	One metre unit	503-210	1	FLf - Flake fragment	Bois blanc						
AhGx-696	L39	One metre unit	505-200	2	FLf - Flake fragment	Onondaga						
AhGx-696	L40	One metre unit	505-203	1	SK - Secondary knapping flake	Lockport						
AhGx-696	L41	One metre unit	505-205	1	SR - Secondary retouch flake	Onondaga						
AhGx-696	L42	One metre unit	505-205	5	FLf - Flake fragment	Lockport						
AhGx-696	L43	One metre unit	505-205	1	FLf - Flake fragment	Bois blanc						
AhGx-696	L44	One metre unit	505-207	3	SK - Secondary knapping flake	Onondaga						
AhGx-696	L45	One metre unit	505-207	2	FLf - Flake fragment	Onondaga						
AhGx-696	L46	One metre unit	505-207	5	SK - Secondary knapping flake	Lockport						
AhGx-696	L47	One metre unit	505-207	9	FLf - Flake fragment	Lockport						
AhGx-696	L48	One metre unit	505-210	2	SK - Secondary knapping flake	Onondaga						
AhGx-696	L49	One metre unit	505-210	1	SR - Secondary retouch flake	Onondaga						
AhGx-696	L50	One metre unit	505-210	2	FLf - Flake fragment	Onondaga						
AhGx-696	L51	One metre unit	505-210	3	FLf - Flake fragment	Lockport						
AhGx-696	L52	One metre unit	505-212	1	SK - Secondary knapping flake	Lockport						
AhGx-696	L53	One metre unit	505-212	2	SR - Secondary retouch flake	Lockport						
AhGx-696	L54	One metre unit	505-212	1	SH - Shatter	Lockport						
AhGx-696	L55	One metre unit	505-215	2	SK - Secondary knapping flake	Lockport						
AhGx-696	L56	One metre unit	505-215	1	SH - Shatter	Lockport						
AhGx-696	L57	One metre unit	505-215	1	S - Scraper	Lockport		Yes				unifacial scraper made on a flake; deep dorsal, lateral retouch extending onto distal edge
AhGx-696	L58	One metre unit	505-220	1	SR - Secondary retouch flake	Onondaga						

Site Name	Cat #	Sub-Operation	Northing-Easting	Qty	Type	Material	Thermal Alt.	# Retouch/U Alt. tilized	L	W	T	Comments
AhGx-696	L59	One metre unit	505-220	1	SR - Secondary retouch flake	Lockport						
AhGx-696	L60	One metre unit	505-220	1	FLf - Flake fragment	Lockport						
AhGx-696	L61	One metre unit	507-205	1	FLf - Flake fragment	Onondaga						
AhGx-696	L62	One metre unit	507-205	1	Bf - Biface fragment	Lockport			39	29	14	rectangular, early stage biface - incomplete bifacial flaking; transverse break at midsection
AhGx-696	L63	One metre unit	507-210	1	SK - Secondary knapping flake	Lockport						
AhGx-696	L64	One metre unit	507-210	1	FLf - Flake fragment	Lockport						
AhGx-696	L65	One metre unit	507-210	1	FLf - Flake fragment	Bois blanc						
AhGx-696	L66	One metre unit	510-200	1	FLf - Flake fragment	Lockport						
AhGx-696	L67	One metre unit	510-205	1	FLf - Flake fragment	Lockport						
AhGx-696	L68	One metre unit	510-210	1	SK - Secondary knapping flake	Onondaga						
AhGx-696	L69	One metre unit	510-210	1	SR - Secondary retouch flake	Onondaga						
AhGx-696	L70	One metre unit	510-215	1	SK - Secondary knapping flake	Lockport						
AhGx-696	L71	One metre unit	510-215	1	SR - Secondary retouch flake	Lockport						
AhGx-696	L72	One metre unit	510-215	3	FLf - Flake fragment	Lockport	Yes	1				
AhGx-696	L73	One metre unit	515-200	2	SK - Secondary knapping flake	Lockport						1 bending initiation flake
AhGx-696	L74	One metre unit	515-200	1	FLf - Flake fragment	Lockport						
AhGx-696	L75	One metre unit	515-205	1	FLf - Flake fragment	Lockport						
AhGx-696	L76	One metre unit	515-210	1	SK - Secondary knapping flake	Bois blanc						
AhGx-696	L77	One metre unit	515-215	1	FLf - Flake fragment	Lockport						
AhGx-696	L78	One metre unit	515-220	1	SH - Shatter	Lockport						
AhGx-696	L79	One metre unit	520-200	1	SR - Secondary retouch flake	Bois blanc						
AhGx-696	L80	One metre unit	520-205	1	FLf - Flake fragment	Lockport						
AhGx-696	L81	One metre unit	520-210	3	SK - Secondary knapping flake	Lockport						
AhGx-696	L82	One metre unit	520-210	2	FLf - Flake fragment	Lockport						
AhGx-696	L83	One metre unit	520-210	1	SH - Shatter	Lockport						

Site Name	Cat #	Sub-Operation	Northing-Easting	Qty	Type	Material	Thermal Alt.	# Retouch/Alt. utilized	L	W	T	Comments
AhGx-696	L84	One metre unit	520-215	1	S - Scraper	Onondaga	Yes		20	25	5	unifacial scraper, made on a flake frag., deep retouch along all intact margins
AhGx-696	L85	One metre unit	520-220	1	SK - Secondary knapping flake	Bois blanc						
AhGx-696	L86	One metre unit	525-215	1	FLf - Flake fragment	Haldimand						
AhGx-696	L87	One metre unit	525-205	2	FLf - Flake fragment	Onondaga	Yes	2				
AhGx-696	L88	One metre unit	525-205	1	FLf - Flake fragment	Lockport						
AhGx-696	L89	One metre unit	525-210	1	SK - Secondary knapping flake	Onondaga						
AhGx-696	L90	One metre unit	525-210	1	ES - End scraper	Bois blanc						unifacial scraper made on a primary flake, steep retouch along distal margin, extending onto lateral margins; minimal dorsal flake removals