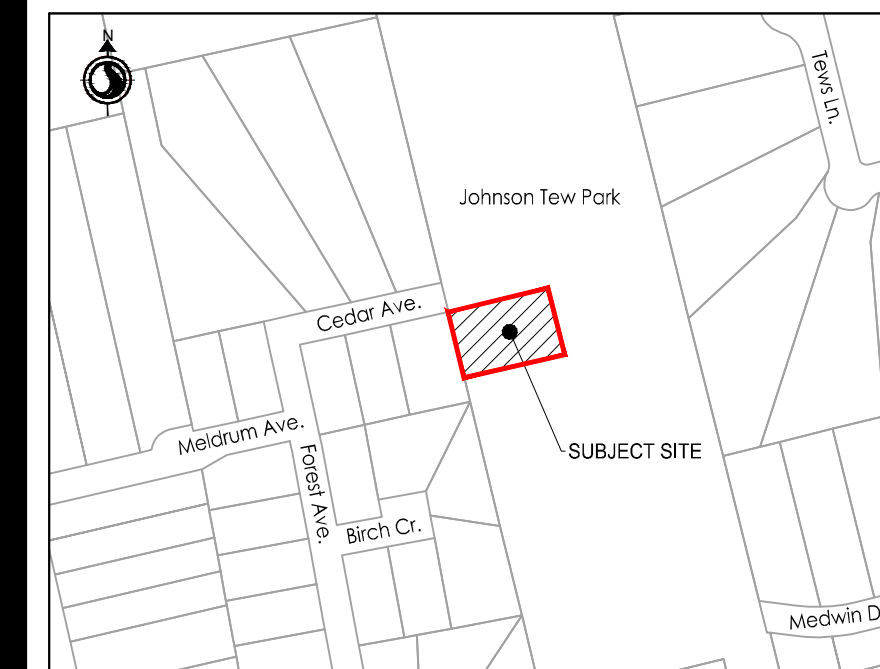
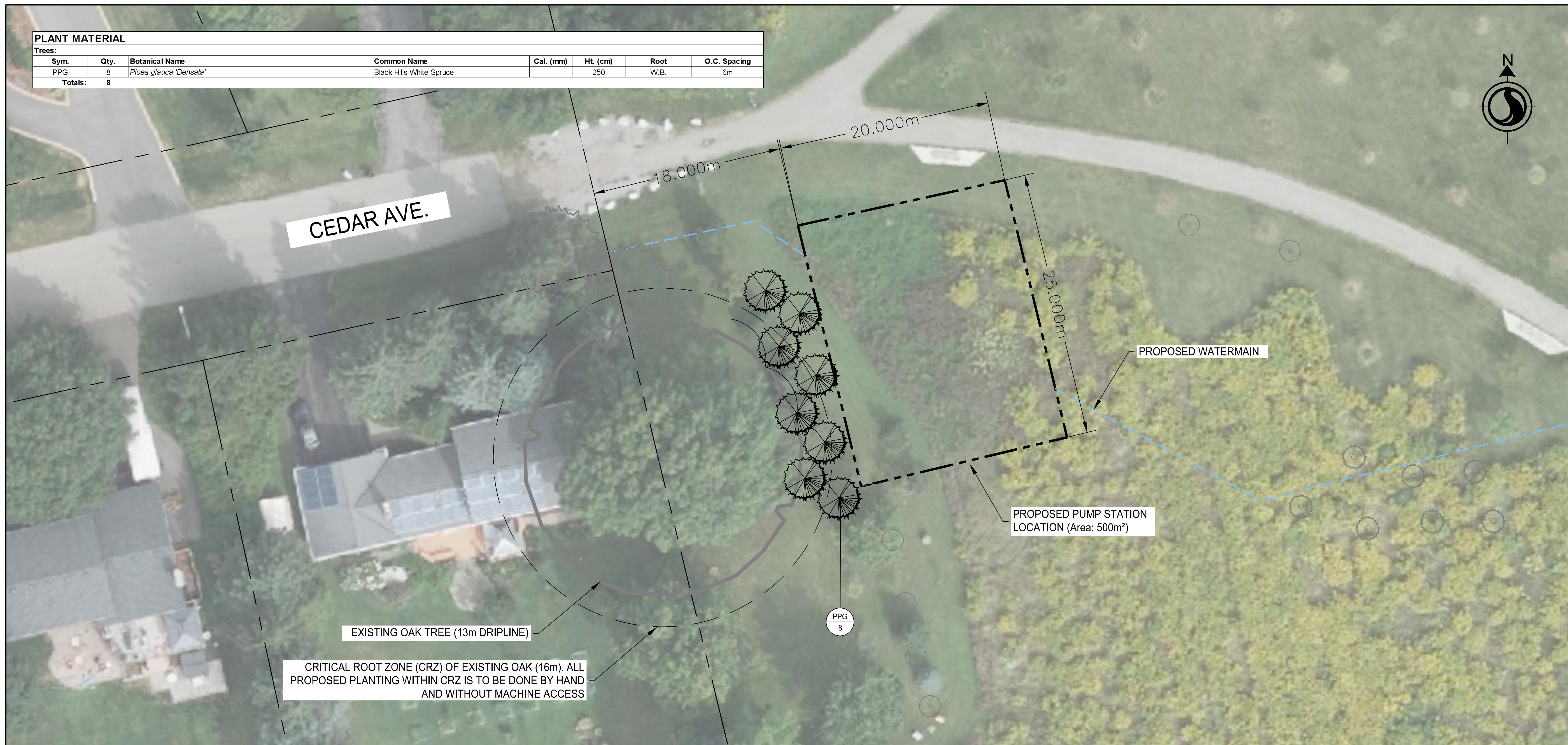


**APPENDIX G
CONCEPTUAL LANDSCAPE PLAN**



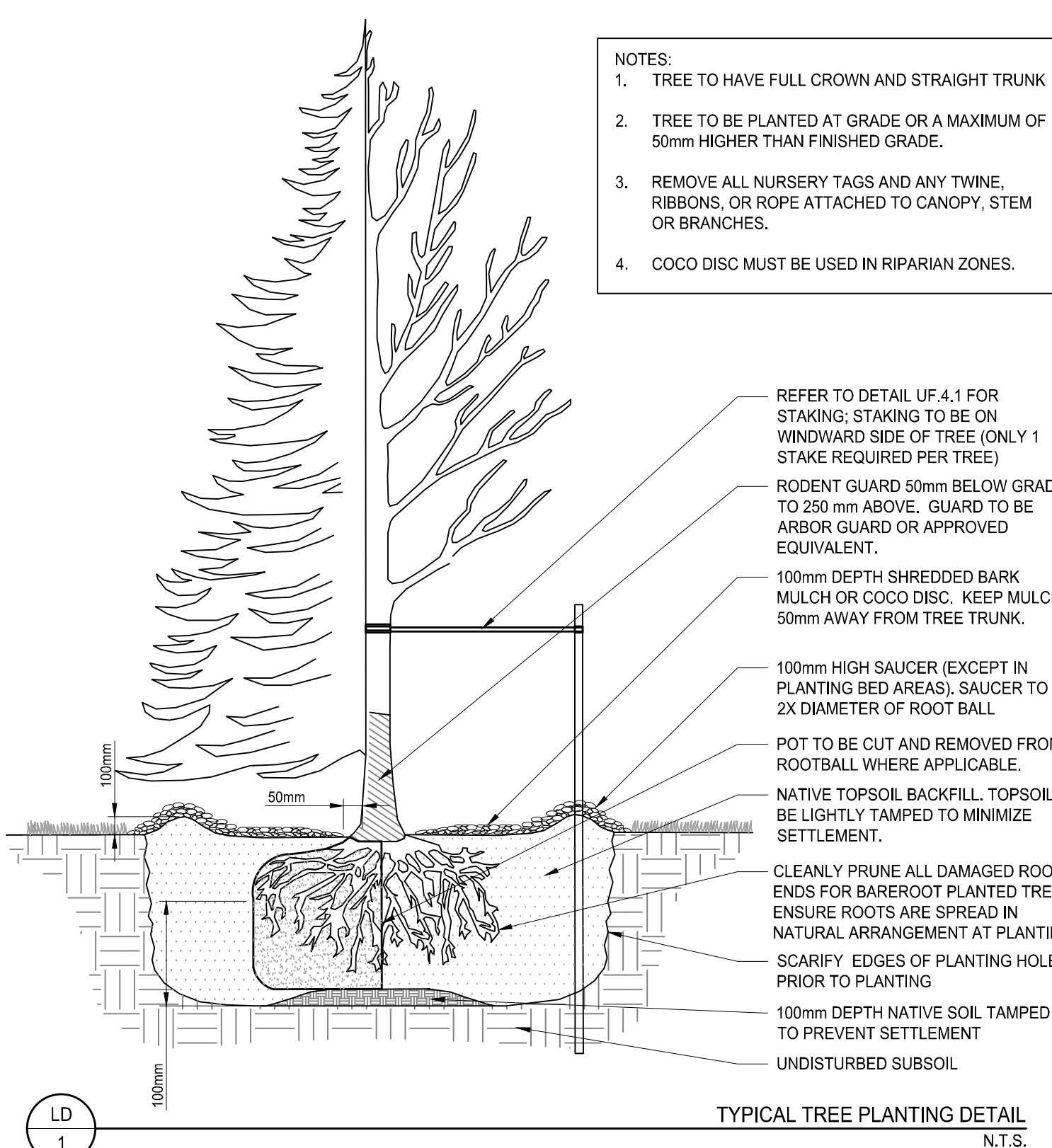
- Legend**
- Proposed Deciduous Tree
 - Proposed Coniferous Trees
 - Plant Species/Quantity Key
 - Existing Tree
 - Critical Root Zone
 - Proposed Pump Station Area
 - Parcel Boundary
 - Proposed Watermain

PLANT MATERIAL							
Trees:							
Sym.	Qty.	Botanical Name	Common Name	Cal. (mm)	Ht. (cm)	Root	O.C. Spacing
PPG	8	<i>Picea glauca</i> 'Densata'	Black Hills White Spruce		250	W.B.	6m
Totals:		8					



PLANTING NOTES

- The Contractor must notify the Landscape Architect prior to the commencement of any planting. The Contractor shall supply all plants and materials in quantities sufficient to complete the work shown on this drawing. Any discrepancies between quantities shall be reported to the Landscape Architect.
- All landscape works will be warranted for a period of two years following inspection and written notice of start of warranty period as determined and provided by the Landscape Architect. Plant material, which is not in a healthy, vigorous growing condition at the end of the warranty period, shall be replaced to the satisfaction of the Landscape Architect / Owner.
- The Landscape Architect reserves the right to extend Contractor's warranty responsibilities for an additional year if, at the end of initial warranty period, leaf development and growth is not sufficient to ensure future survival as determined by the Landscape Architect.
- The Contractor is to identify with Landscape Architect/Owner any maintenance requirements necessary for warranty purposes.
- Plant materials specified for this project will conform to the Canadian Nursery Landscape Association (C.N.L.A.) for size, variety and condition as indicated on the plant schedule shown on these drawings. Any plant materials which do not conform will be promptly removed from the site and replaced by the Contractor at no additional cost to the project.
- The Landscape Architect is to be contacted for inspection and written approval prior to plant material arriving on site. The Landscape Architect reserved the right to reject any plant materials that have not been inspected and approved.
- The Landscape Architect reserves the right to refuse acceptance of any plant displaying poor growth habits, injury or disease. Any plant material that is rejected by the Landscape Architect will be promptly removed from the site and replaced with material of acceptable quality at no additional charge to the project.
- Plant materials collected from wild sources will not be accepted without written approval of the Landscape Architect. The Landscape Architect reserves the right to require that supplier invoices be submitted for inspection and approval prior to acceptance.
- On-site layout of the plant materials to be approved by the Landscape Architect prior to installation. Minor field adjustments to plant material locations may be necessary to respond to the locations of existing plants and site conditions. The Contractor to review with Landscape Architect where relocations are necessary. The Contractor must receive approval from Landscape Architect prior to installation.
- Plants are not to be installed during extreme heat, drought, or other undesirable conditions. Thoroughly water all plants immediately after installation. The Contractor shall regularly monitor site conditions and water as required to ensure healthy growth conditions throughout the duration of the warranty period.
- Do not plant directly in centerline of drainage swales or depression areas. Where proposed planting locations conflict with constructed swales or low-lying wet areas, contact Landscape Architect for direction.
- All trees and shrubs are to be planted in accordance with the planting details shown on this drawing.
- Topsoil: Each source of topsoil, imported or native to be approved by Landscape Architect prior to use. Submit topsoil analysis/test results to Landscape Architect prior to order or delivery to site. Testing to be in accordance with Contract specifications.
- Mulch: to be spread uniformly around the base of trees and shrubs to a minimum depth of 100 mm. Do not place mulch in direct contact with trunk or stem(s). Allow a 100 mm mulch free zone at trunk/stems. Shrubs to be in continuously mulched planting beds unless otherwise specified.
- The Contractor is to remove dead or damaged branches on trees or shrubs. All pruning shall be performed in accordance with standard horticultural practices and appropriate timing for each species.
- All stakes and associated ties are to be removed after the first full growing season. Rodent guards are to be removed at the conclusion of the warranty period. OPTIONAL: Gatorbags are to be removed for winter months.



ISSUED FOR REVIEW	JL	LB	2024.03.05
Revision/Issue	By	Appd	YYYY.MM.DD
File Name: 165640407_L-PS_18m	Dwn.	Dsgn.	Chkd. 2024.03.05
			YYYY.MM.DD

Permit-Seal

PRELIMINARY NOT FOR CONSTRUCTION

Not for permits, pricing or other official purposes. This document has not been completed or checked and is for general information or comment only.

Client/Project
City of Hamilton

Greenville WSS Class EA Study

Hamilton, ON

Title
Landscape Plan

1:165640407_01.dwg (2/16/2024 10:02:29 AM) by: jlp (jlp) 3/16/2024 10:02:29 AM