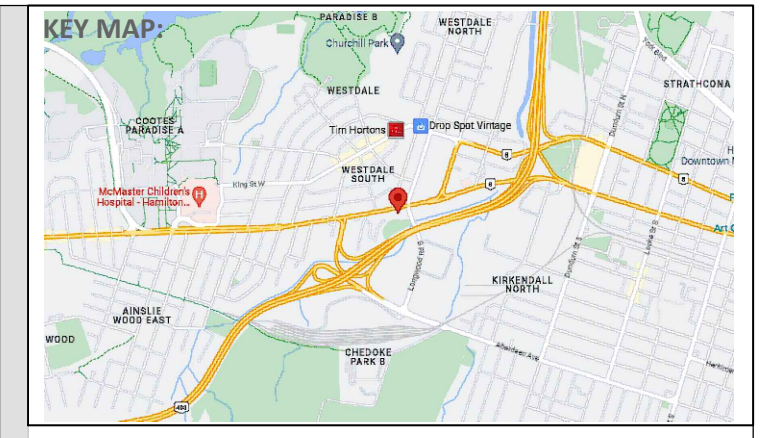
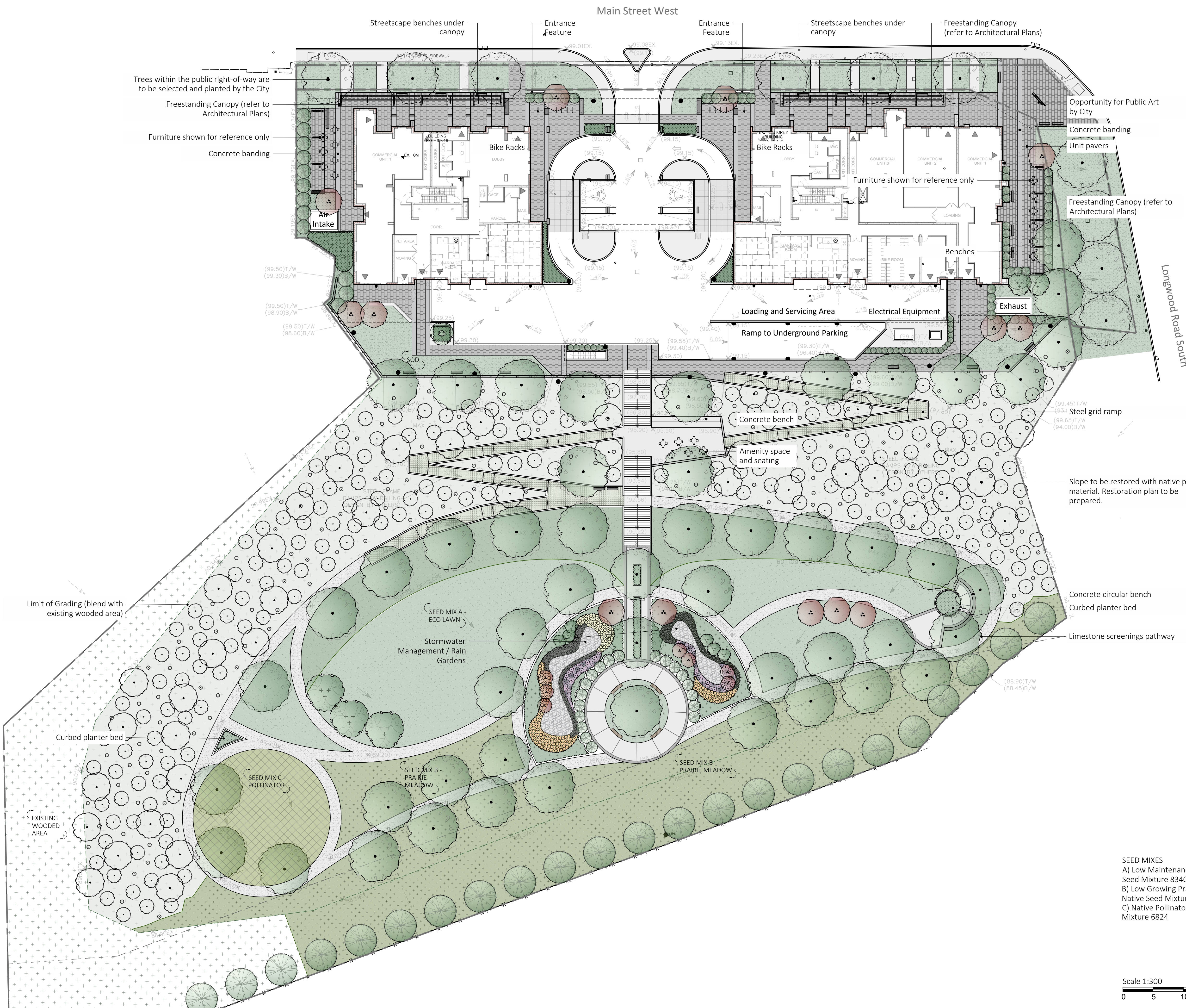


**925 MAIN
LANDSCAPE CONCEPT**



LEGEND:

- Concrete
- Sod
- (116.90) Proposed Elevation
- (116.90) Existing Elevation
- Existing Tree
- Proposed Vegetation

- Landscape Notes**
- Dimensions are shown in meters unless noted otherwise. Do not scale drawings.
 - Contractor to review layout on site with Landscape Architect prior to commencing work.
 - Contractor to verify grades and identify discrepancies prior to initiating work. Report any changes, discrepancies, or substitutions to the Landscape Architect for review prior to work.
 - It is the contractor's responsibility to locate and verify all existing utilities and services prior to construction.
 - Plant material support systems must be removed by the contractor at time of final acceptance. No extras will be paid to complete this work.
 - Contractor to provide minimum one (1) year warranty from date accepted on all work unless otherwise specified.
 - Grading and servicing shown is for information purposes. For grading and servicing information refer to engineering drawings.
 - For lighting information and power distribution refer to the electrical drawings.
 - Drawings are for construction only if Landscape Architects stamp is signed and dated by the Landscape Architect, and plans are approved by the Municipality.
 - Tree planting within the municipal right-of-way to be undertaken by the Municipality unless noted otherwise.
 - Unless otherwise specified all landscaped areas are to be sodded.
 - Unless otherwise specified, all undeveloped areas shall be undisturbed and kept free and clear of debris.
 - The Owner is to be aware of the Migratory Birds Convention Act, 1994. This Act is implemented by Environment Canada and the Owner is to make every effort to avoid removal of vegetation from the period of March 31st to August 31st.

STAMP:

NOT FOR CONSTRUCTION

WHITEHOUSE URBAN DESIGN
LANDSCAPE ARCHITECTS & URBAN DESIGNERS

REVISIONS / SUBMISSIONS

NO.	DESCRIPTION	DATE:

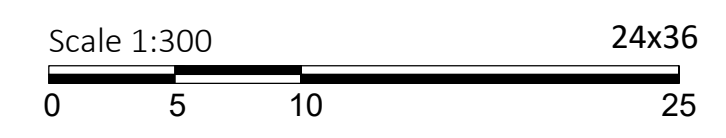
CLIENT:
925 Main St. West (Hamilton) Ltd.

PROJECT TITLE:
925 Main St. West

SHEET TITLE:
Landscape Concept

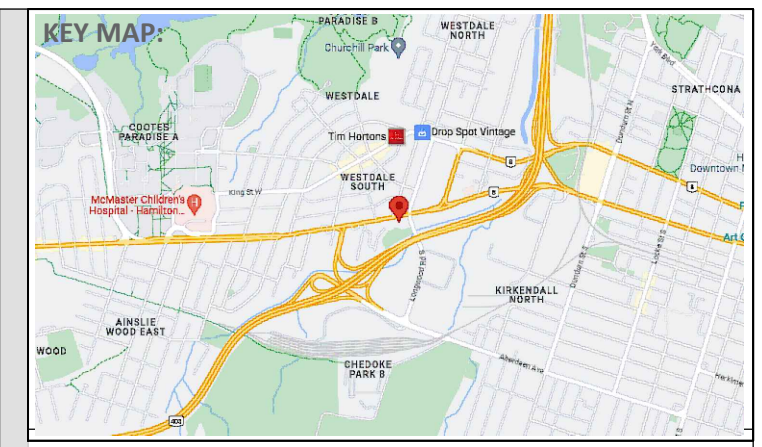
DWG No. L1 **DRAWN BY:** KZ
SHEET No. 1 of 4 **DESIGN BY:** LWS and KZ
PROJECT No: 093-23 **CHECKED BY:** LWS
SCALE: As shown **NORTH ARROW:**

SEED MIXES
A) Low Maintenance Eco Lawn
Seed Mixture 8340
B) Low Growing Prairie Meadow
Native Seed Mixture 8125
C) Native Pollinator Garden Seed
Mixture 6824



Streetscape Treatment Enlargement

Corner Treatment Enlargement



LEGEND:

- Concrete
- Asphalt
- Sod
- (116.90) Existing Elevation
- (116.90) Proposed Elevation
- Existing Tree
- Proposed Vegetation

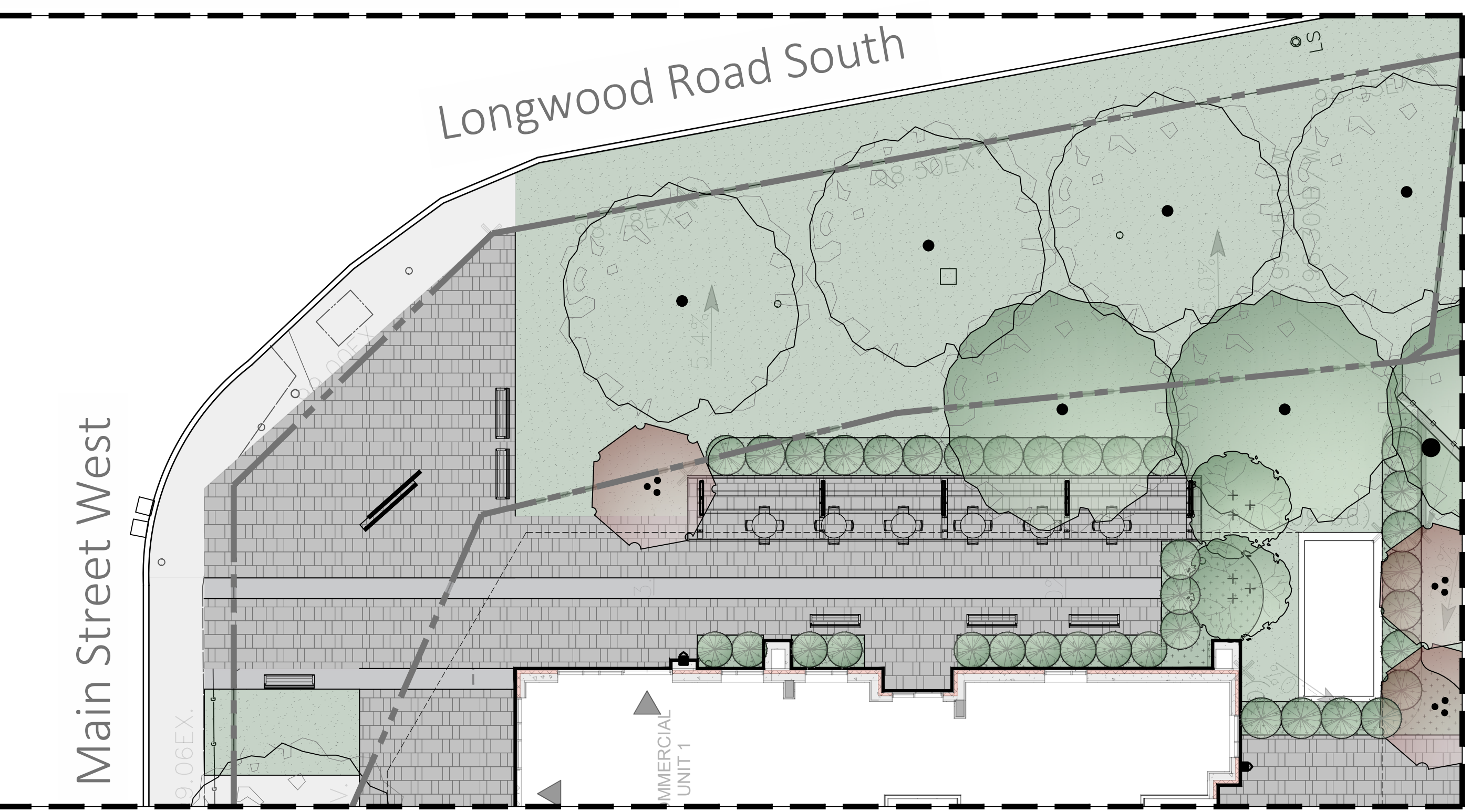
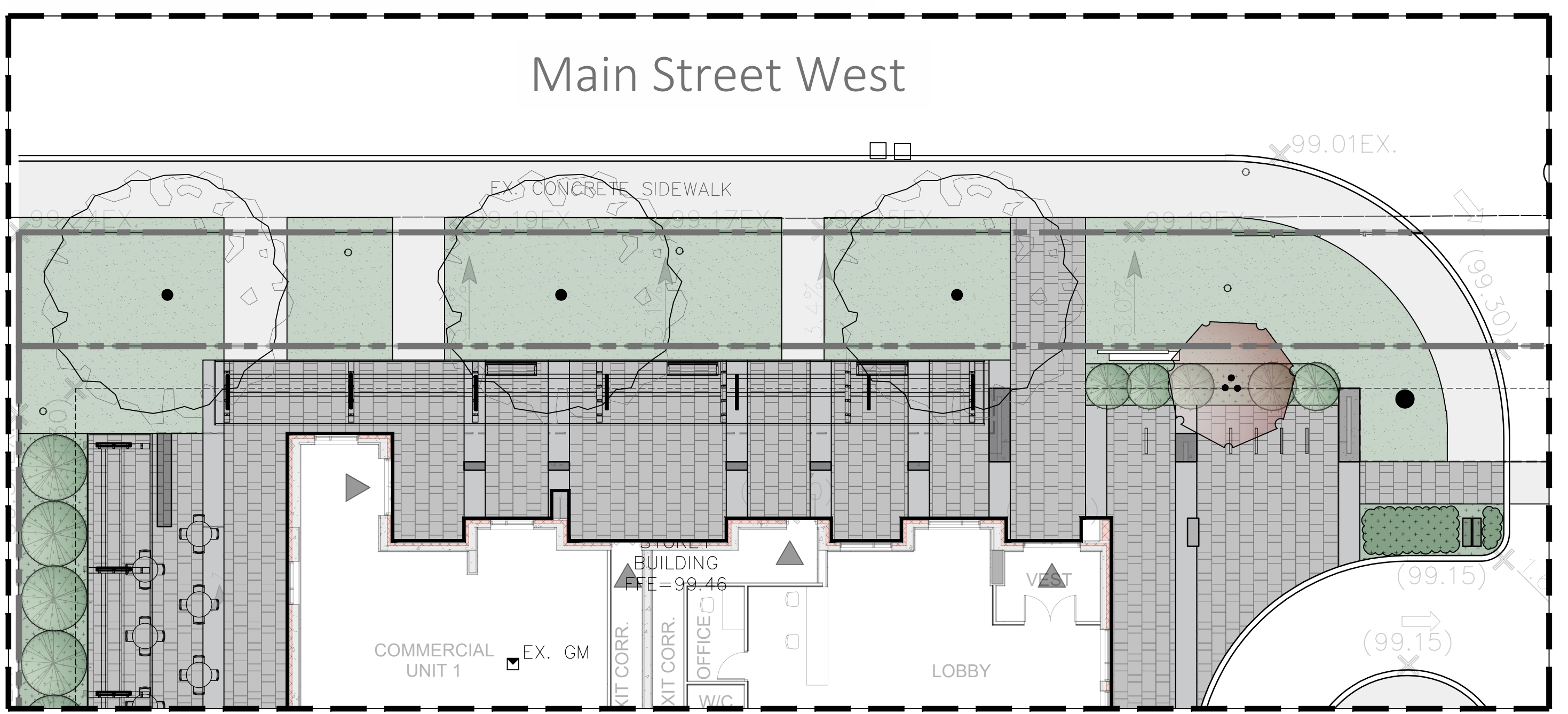
- Landscape Notes**
- Dimensions are shown in meters unless noted otherwise. Do not scale drawings.
 - Contractor to review layout on site with Landscape Architect prior to commencing work.
 - Contractor to verify grades and identify discrepancies prior to initiating work. Report any changes, discrepancies, or substitutions to the Landscape Architect for review prior to work.
 - It is the contractor's responsibility to locate and verify all existing utilities and services prior to construction.
 - Plant material support systems must be removed by the contractor at time of final acceptance. No extras will be paid to complete this work.
 - Contractor to provide minimum one (1) year warranty from date accepted on all work unless otherwise specified.
 - Grading and servicing shown is for information purposes. For grading and servicing information refer to engineering drawings.
 - For lighting information and power distribution refer to the electrical drawings.
 - Drawings are for construction only if Landscape Architect stamp is signed and dated by the Landscape Architect, and plans are approved by the Municipality.
 - Tree planting within the municipal right-of-way to be undertaken by the Municipality unless noted otherwise.
 - Unless otherwise specified all landscaped areas are to be sodded.
 - Unless otherwise specified, all undeveloped areas shall be undisturbed and kept free and clear of debris.
 - The Owner is to be aware of the Migratory Birds Convention Act, 1994. This Act is implemented by Environment Canada and the Owner is to make every effort to avoid removal of vegetation from the period of March 31st to August 31st

STAMP:

NOT FOR CONSTRUCTION

Streetscape Treatment Enlargement

Corner Treatment Enlargement



WHITEHOUSE URBAN DESIGN
LANDSCAPE ARCHITECTS & URBAN DESIGNERS

REVISIONS / SUBMISSIONS

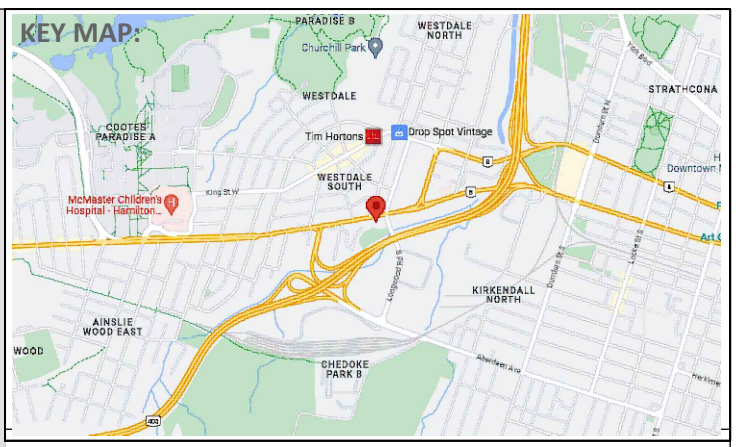
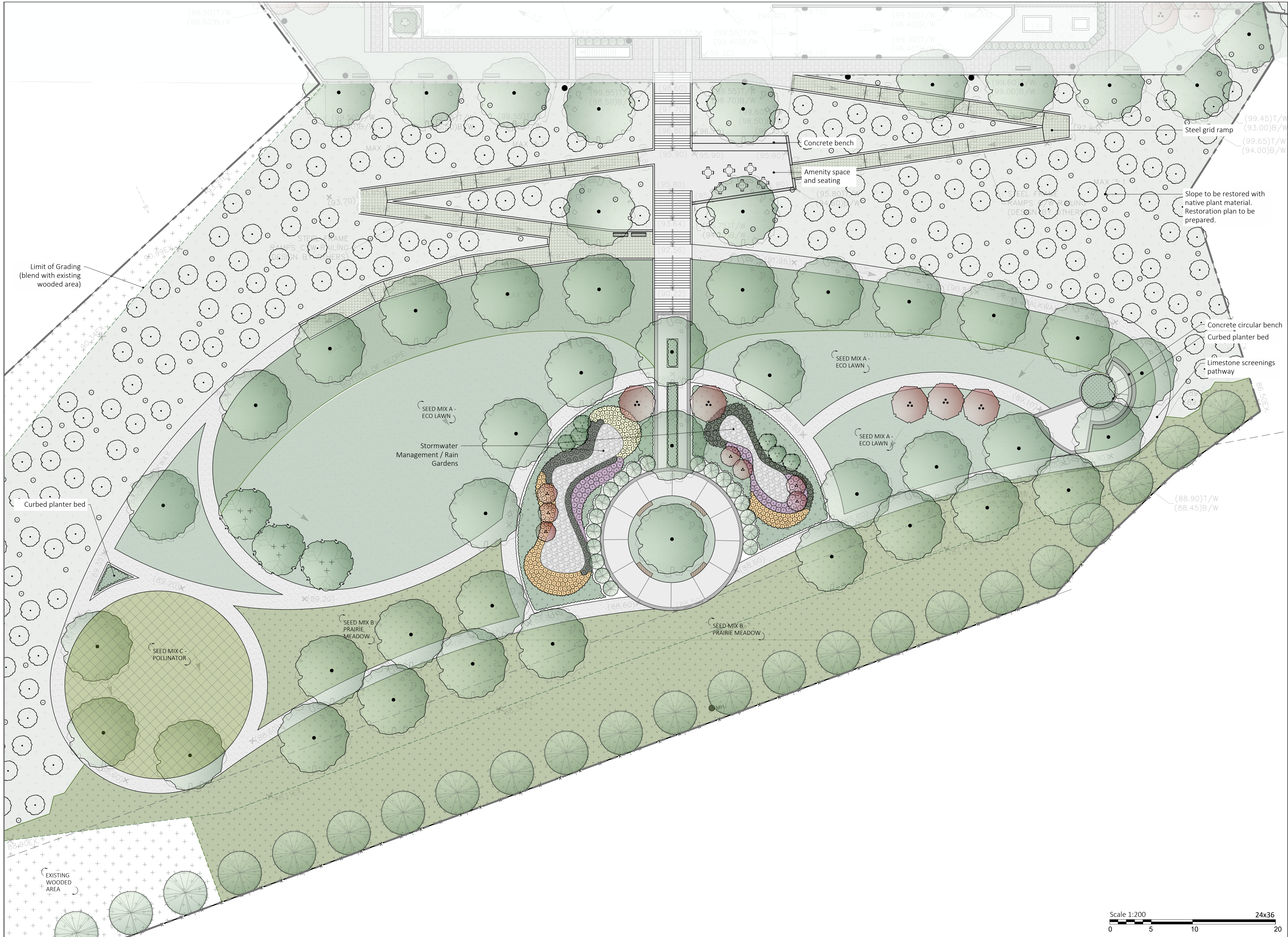
NO.	DESCRIPTION	DATE:
1	For ZBA Submission	2024-11-20

CLIENT:
925 Main St. West (Hamilton) Ltd.

PROJECT TITLE:
925 Main St. West

SHEET TITLE:
Landscape Concept: Table lands

DWG No.: L2 **DRAWN BY:** KZ
SHEET No.: 2 of 4 **DESIGN BY:** LWS and KZ
PROJECT No.: 093-23 **CHECKED BY:** LWS
SCALE: As shown **NORTH ARROW:**



LEGEND:

	Concrete		Existing Tree
	Asphalt		Proposed Vegetation
	Sod		
	(116.90) Proposed Elevation		Existing Elevation

- Landscape Notes**
- Dimensions are shown in meters unless noted otherwise. Do not scale drawings.
 - Contractor to review layout on site with Landscape Architect prior to commencing work.
 - Contractor to verify grades and identify discrepancies prior to initiating work. Report any changes, discrepancies, or substitutions to the Landscape Architect for review prior to work.
 - It is the contractor's responsibility to locate and verify all existing utilities and services prior to construction.
 - Plant material support systems must be removed by the contractor at time of final acceptance. No extras will be paid to complete this work.
 - Contractor to provide minimum one (1) year warranty from date accepted on all work unless otherwise specified.
 - Grading and servicing shown is for information purposes. For grading and servicing information refer to engineering drawings.
 - For lighting information and power distribution refer to the electrical drawings.
 - Drawings are for construction only if Landscape Architects stamp is signed and dated by the Landscape Architect, and plans are approved by the Municipality.
 - Tree planting within the municipal right-of-way to be undertaken by the Municipality unless noted otherwise.
 - Unless otherwise specified all landscaped areas are to be sodded.
 - Unless otherwise specified, all undeveloped areas shall be undisturbed and kept free and clear of debris.
 - The Owner is to be aware of the Migratory Birds Convention Act, 1994. This Act is implemented by Environment Canada and the Owner is to make every effort to avoid removal of vegetation from the period of March 31st to August 31st.

STAMP:

NOT FOR CONSTRUCTION



REVISIONS / SUBMISSIONS

NO.	DESCRIPTION	DATE:

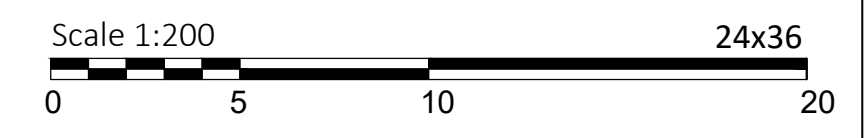
1 For ZBA Submission 2024-11-20

CLIENT:
925 Main St. West (Hamilton) Ltd.

PROJECT TITLE:
925 Main St. West

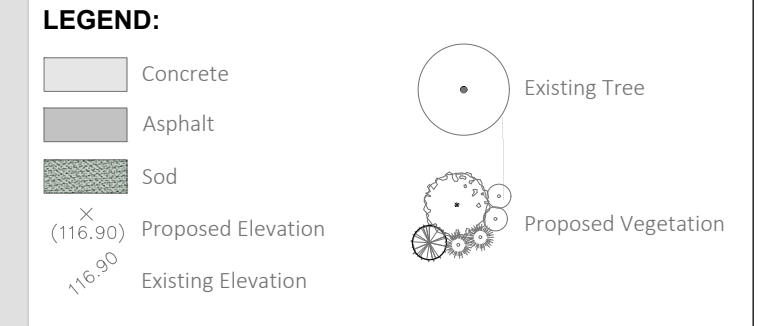
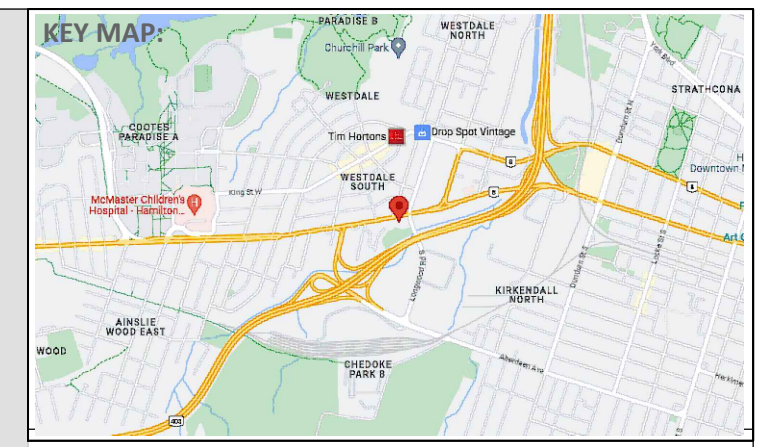
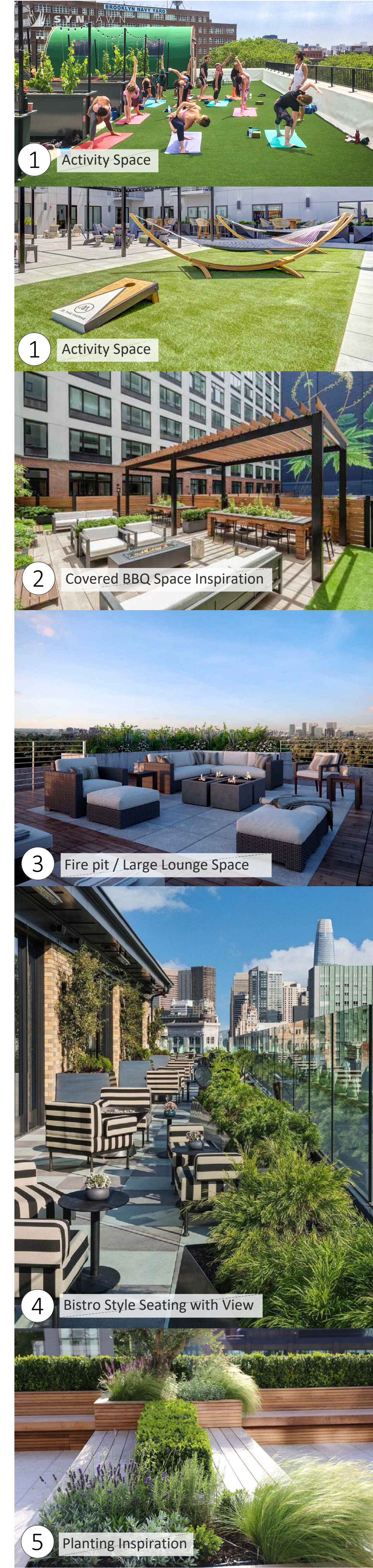
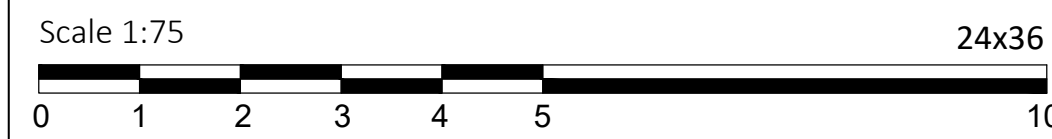
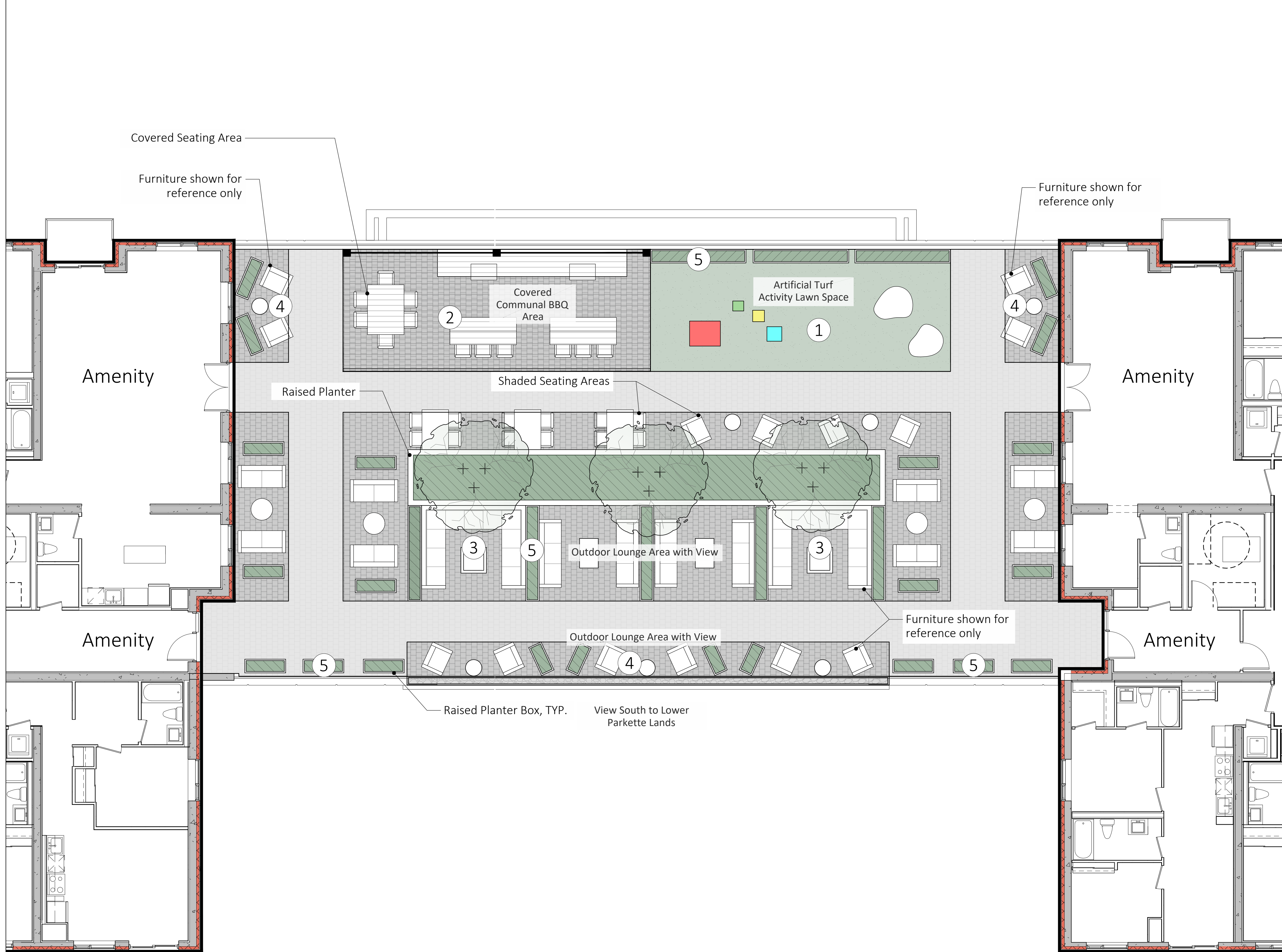
SHEET TITLE:
Landscape Concept: Parkette Lands

DWG No. L3 **DRAWN BY: KZ**
SHEET No. 3 of 4 **DESIGN BY: LWS and KZ**
PROJECT No: 093-23 **CHECKED BY: LWS**
SCALE: As shown **NORTH ARROW:**



Whitehouse Urban Design Inc.
3 Stuebner Place, Unit 1, Hamilton, ON, L8L 0C8
905-546-1087

7th Floor Outdoor Amenity Plan



- Landscape Notes**
- Dimensions are shown in meters unless noted otherwise. Do not scale drawings.
 - Contractor to review layout on site with Landscape Architect prior to commencing work.
 - Contractor to verify grades and identify discrepancies prior to initiating work. Report any changes, discrepancies, or substitutions to the Landscape Architect for review prior to work.
 - It is the contractor's responsibility to locate and verify all existing utilities and services prior to construction.
 - Plant material support systems must be removed by the contractor at time of final acceptance. No extras will be paid to complete this work.
 - Contractor to provide minimum one (1) year warranty from date accepted on all work unless otherwise specified.
 - Grading and servicing shown is for information purposes. For grading and servicing information refer to engineering drawings.
 - For lighting information and power distribution refer to the electrical drawings.
 - Drawings are for construction only if Landscape Architects stamp is signed and dated by the Landscape Architect, and plans are approved by the Municipality.
 - Tree planting within the municipal right-of-way to be undertaken by the Municipality unless noted otherwise.
 - Unless otherwise specified all landscaped areas are to be sodded.
 - Unless otherwise specified, all undeveloped areas shall be undisturbed and kept free and clear of debris.
 - The Owner is to be aware of the Migratory Birds Convention Act, 1994. This Act is implemented by Environment Canada and the Owner is to make every effort to avoid removal of vegetation from the period of March 31st to August 31st.



REVISIONS / SUBMISSIONS

NO.	DESCRIPTION	DATE:
1	For ZBA Submission	2024-11-20

CLIENT:
925 Main St. West (Hamilton) Ltd.

PROJECT TITLE:
925 Main St. West

SHEET TITLE:
7th Floor Amenity Concept

DWG No.: L4 **DRAWN BY:** KZ
SHEET No.: 4 of 4 **DESIGN BY:** LWS and KZ
PROJECT No.: 093-23 **CHECKED BY:** LWS
SCALE: As shown **NORTH ARROW:**

Whitehouse Urban Design Inc.
3 Stouffer Place, Unit 1, Hamilton, ON, L8L 0C8
905-546-1087